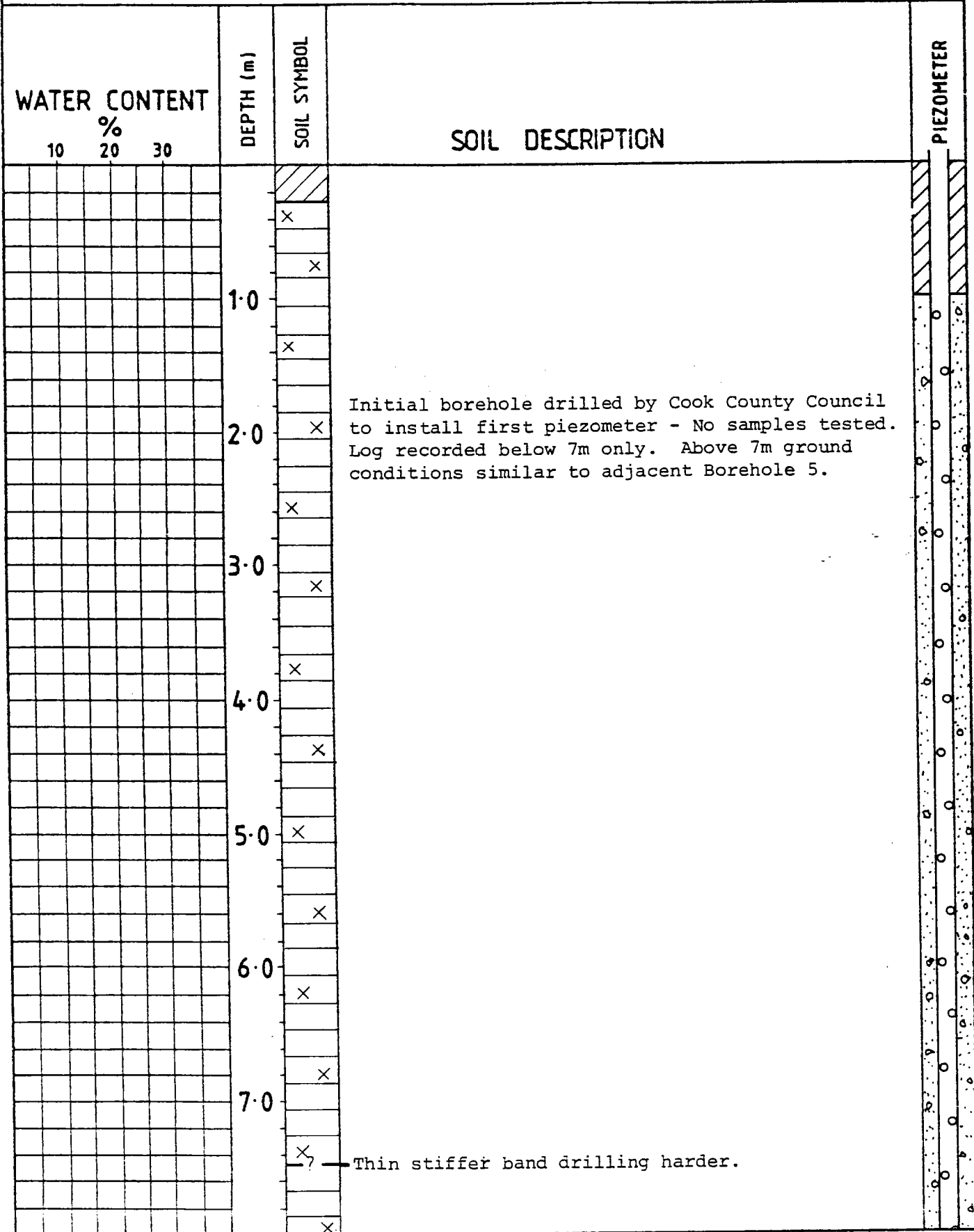


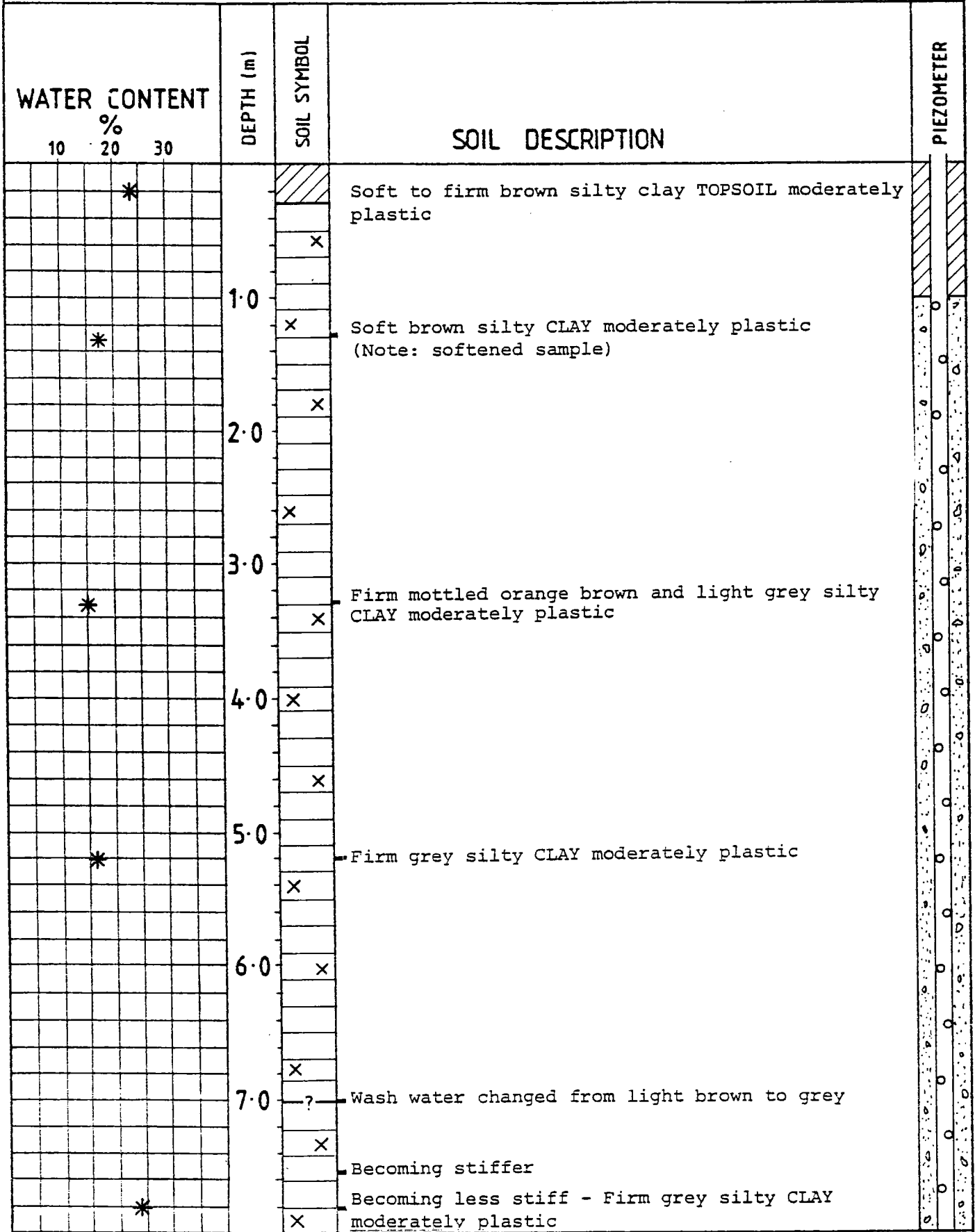
WATER CONTENT 10 20 30 %	DEPTH (m)	SOIL SYMBOL	SOIL DESCRIPTION	PIEZOMETER
		x	Firm mottled orange brown brown and blue grey silty CLAY with occasional fine gravel size weathered siltstone fragments (sample softened during drilling) Becoming stiffer - wash water changed from brown to light grey Grey silty CLAY with fine gravel size siltstone fragments (sample highly softened during drilling)	
*		o		
		x		
	9.0	?		
*		x		
		o		
		o		
	10.0	x		
		o		
		x		
		o		
		x		
*		x	Grey slightly sandy (f) very silty CLAY moderately plastic (sample highly softened during drilling) Note:- below about 8.8 m depth the drilling alternated easy and hard indicating a possible banded structure	
	11.0	EOB		
	12.0			
	13.0			
	14.0			
	15.0			

WATER CONTENT 10 20 30 %	DEPTH (m)	SOIL SYMBOL	SOIL DESCRIPTION	PIEZOMETER
*		/ / / /	Firm brown slightly sandy (f) silty CLAY moderately plastic with occasional fine roots.	/ / / /
	1.0	x		
*		x	Firm to stiff mottled orange brown and light blue grey silty CLAY moderately plastic with very occasional fine gravel size siltstone fragments.	o
	2.0	x		
	3.0	x		
*		x	Mottled grey brown and orange brown very silty CLAY (sample highly softened during drilling).	o
	4.0	x		
*		?	Speckled dark grey and yellow brown clayey silty SAND (f)	o
	5.0	x		
	6.0	?	Drilling becomes harder and wash water changes from brown to dark grey Drilling becomes easier	o
	7.0	x	Black slightly silty SAND (f) (The dark colouration is due to a concentration of heavy minerals) Loss of water during drilling	o
		EOB		o

WATER CONTENT			DEPTH (m)	SOIL SYMBOL	SOIL DESCRIPTION	PIEZOMETER
10	20	30				
			1.0	x	As borehole 2	
				x		
			2.0	x		
				x		
			3.0	x		
				x		
			4.0	x x	Mottled orange brown and light blue grey clayey SILT (sample softened during drilling to soft to firm)	
				x		
				x x		
				x		
				x x		
				x		
			5.0	EOB	Speckled grey and yellow brown slightly clayey silty SAND (f)	
			6.0			
			7.0			



WATER CONTENT % 10 20 30	DEPTH (m)	SOIL SYMBOL	SOIL DESCRIPTION	PIEZOMETER
		X		
		X		
	9.0	X	Wash water changed from light brown to light grey drilling becomes harder	
		X	Colour changes to grey with fine sand and silt in washwater return.	
		X		
	10.0	X		
		X		
	11.0	EOB	Note: between 7.0m and 9.1m depth the drilling alternated easy and hard indicating a possible banded structure.	
	12.0			
	13.0			
	14.0			
	15.0			



WATER CONTENT 10 20 30 %	DEPTH (m)	SOIL SYMBOL	SOIL DESCRIPTION	PIEZOMETER
		X	Becoming stiffer for 0.3 m	
	9.0	X	Becoming stiffer for 0.2 m - firm occasionally firm to stiff grey very silty CLAY	
*		X		
		X	Becoming stiffer for 0.1 m - firm to stiff grey very silty CLAY moderately plastic	
	10.0	X	Becoming very stiff	
		EOB		
	11.0		Note: below about 7.5 m depth the drilling alternated easy and hard indicating a possible banded structure.	
	12.0			
	13.0			
	14.0			
	15.0			

WATER CONTENT			DEPTH (m)	SOIL SYMBOL	SOIL DESCRIPTION	PIEZOMETER
10	20	30				
				x		
			1.0	x		
	*			x	Firm mottled orange brown and grey brown silty CLAY moderately plastic. Wash water changes from brown to grey/green.	
			2.0	x		
				x		
			3.0	x	Firm to stiff mottled yellow brown and blue grey silty CLAY low plasticity	
	*			x		
			4.0	x		
				x		
			5.0	x	Firm to stiff mottled yellow brown and light blue grey silty CLAY moderately plastic	
	*			x		
			6.0	x	Firm grey silty CLAY with dark brown highly decomposed wood fragment (sample softened during drilling)	
				x		
			7.0	x		
				o x	Firm to stiff mottled yellow grey brown and blue grey silty CLAY with highly weathered medium gravel size siltstone fragments - drilling becomes stiffer	
	*			o		

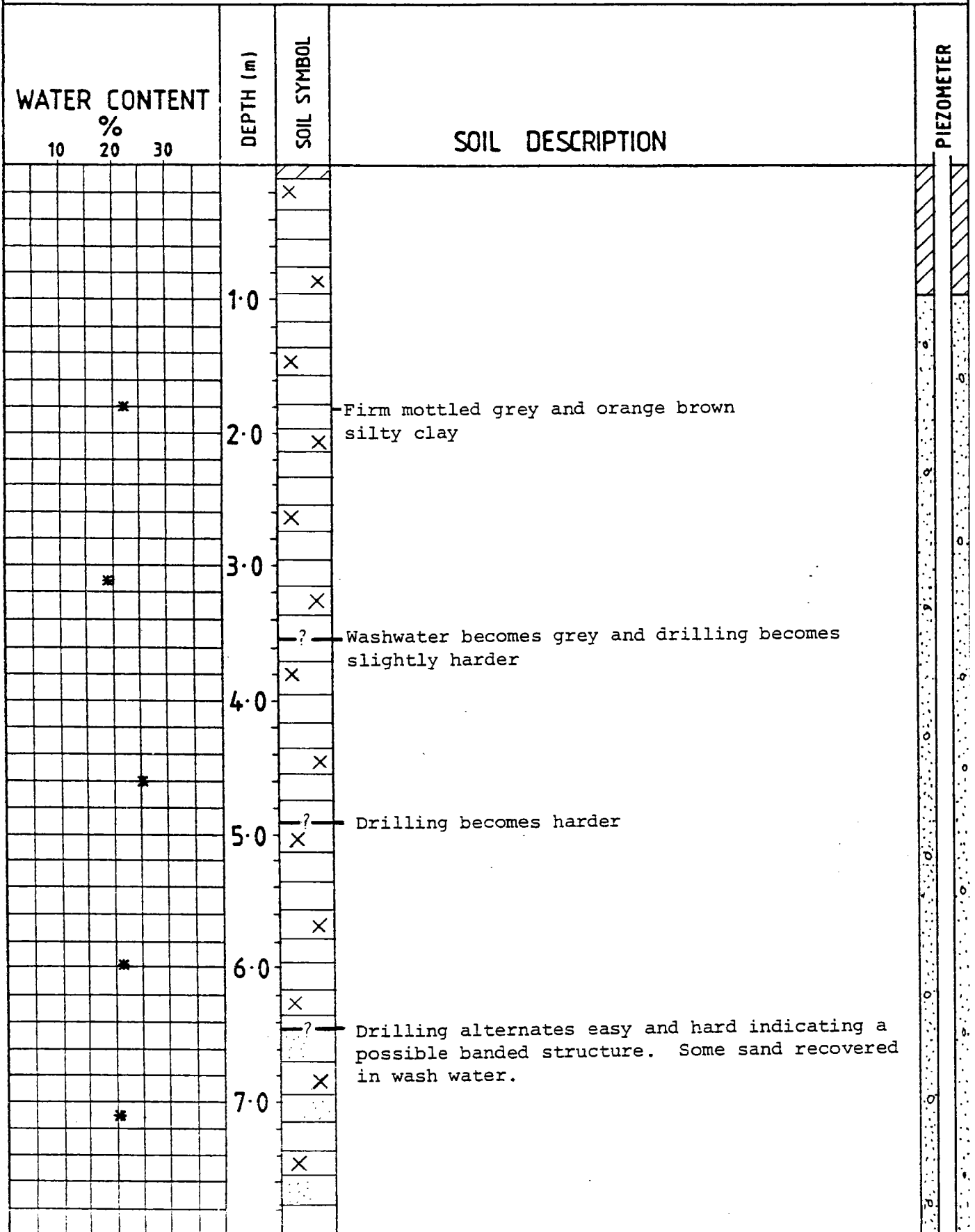


WATER CONTENT %	DEPTH (m)	SOIL SYMBOL	SOIL DESCRIPTION	PIEZOMETER
10		o x		
20		o		
30		x		
		x		
	9.0	EOB	Blue grey very silty CLAY. Drilling hard possibly siltstone (Sample highly softened during drilling to firm to stiff)	

WATER CONTENT 10 20 30 %	DEPTH (m)	SOIL SYMBOL	SOIL DESCRIPTION	PIEZOMETER
		x		
	1.0	x		
*		x	Firm mottled orange brown and light blue grey silty CLAY moderately plastic	
	2.0	x		
		x		
	3.0	x		
*			Firm mottled blue grey occasionally orange brown slightly sandy (f) silty CLAY moderately plastic. Wash water changes from brown to grey.	
	4.0			
		x		
*	5.0		Firm to stiff mottled grey and blue grey slightly sandy (f) silty CLAY with occasional highly weathered fine gravel size fragments of grey silty sandstone(f)	
		x		
	6.0	x		
*			Firm mottled blue grey and orange yellow brown silty CLAY moderately plastic	
	7.0	x		
			Mottled light grey and blue grey silty CLAY moderately plastic with very occasional decomposing twigs. The light grey mottles are highly weathered slightly silty clay fragments (Sample has softened to firm during drilling).	
*				

WATER CONTENT 10 20 30 %	DEPTH (m)	SOIL SYMBOL	SOIL DESCRIPTION	PIEZOMETER
		X		
	9.0	X		
*				
			Mottled blue grey and grey brown sandy (f) silty CLAY moderately plastic (Sample highly softened to soft to firm during drilling)	
		X		
	10.0	X		
		X		
*				
			Firm mottled blue grey and yellow grey brown silty CLAY moderately plastic with fine gravel size sandy pockets	
	11.0	X		
		?	Drilling becomes harder	
		X		
	12.0	X		
*				
			Firm to stiff grey silty CLAY (Probably highly weathered siltstone)	
		X		
	13.0			
		X		
		EOB		
	14.0			
	15.0			

WATER CONTENT %	DEPTH (m)	SOIL SYMBOL	SOIL DESCRIPTION	PIEZOMETER
		X		
		X		
	1.0			
		X		
		X		
*	2.0		Firm mottled grey and orange brown silty CLAY moderately plastic	
		X		
		X		
	3.0			
		X		
*	4.0		Drilling becomes harder	
		X		
		X	Loss of drilling water	
	5.0			
		X		
		X	Drilling alternates easy and hard indicating a possible banded structure	
*	6.0		Very stiff grey silty CLAY (weathered mudstone) washwater changes from brown to grey	
		X		
*	7.0		Very stiff grey silty CLAY (weathered mudstone) (Water loss test carried out water fell 4-5cm per min.)	
		X		
		EOB		



WATER CONTENT % 10 20 30	DEPTH (m)	SOIL SYMBOL	SOIL DESCRIPTION	PIEZOMETER
		X	Drilling hard no further samples	
		X		
	9.0	X		
		X		
		?	Drilling alternates easy and hard indicating a possible banded structure	
	10.0	X		
		X		
	11.0	EOB		
	12.0			
	13.0			
	14.0			
	15.0			