

3. Follow the same sequence of inspecting bait points and replacing bait as described in the section on rats.
4. For mice, which only nibble at their food, put down several lots of bait fairly close together to make sure they eat enough of it.

PREVENTION

Guard Against Reinfestation and Keep Them Away

Look for and rodent proof any places where rats or mice are gaining access to the premises. Common entry points are openings around service pipes, gaps near wall skirtings, broken underfloor ventilation grates, missing drainage grates, gaps under doors and trees against buildings giving access to roof spaces.

Suitable materials for proofing are light sheet iron or tin, rolled up chicken netting and plaster made of sand and cement.

Carefully check likely areas for signs of rodent activity every 2 - 3 months.

Clear overgrown areas and regularly remove accumulations of refuse and old building materials to prevent harbourage.

- Throw out old newspapers, boxes, rags, and junk from cupboards, spare rooms, and basements.
- Get rid of piles of bricks, timber, rubble, derelict cars or appliances and heaps of garden rubbish. Clear overgrown parts of the section.
- When storing things outside or in the basement put them on racks off the ground. Check them from time to time for signs of rats or mice.

- Make sure your rubbish tin has a tight lid and that this is always kept on.
- Fix dripping taps, and don't let water collect in buckets or tins outside. This will help cut off the rat's supply of drinking water.
- Don't leave food for pets of birds out overnight where rats can get at it.
- Seal holes around pipes into buildings with cement or metal sheathing (flattened tins will do).
- Make sure doors and windows fit tightly, and repair any damaged ones.
- Screen all holes and gaps into basements or houses with fine wire mesh (1 cm (3/8 in.) or smaller).

A cat or dog will not automatically solve your rat or mouse problem. Even if it is a good hunter, it won't have much effect.

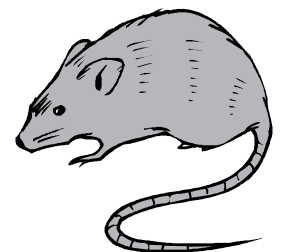
Updated 21.05.2007

GISBORNE DISTRICT COUNCIL ▶ **CUSTOMER SERVICE UNIT**

T: 06 867 2049
E: service@gdc.govt.nz

F: 06 867 8076
W: www.gdc.govt.nz

Control of Rats and Mice



RESPONSIBILITY

On private property the owner and occupier are responsible for taking action to eradicate any rats and mice and to avoid conditions which are likely to encourage these pests.

RAT and MICE BAIT

Rat and mice bait can be purchased from supermarkets or hardware stores. Bait and traps are also available for purchase from Council. Alternatively a pest control firm (listed in the Yellow Pages) can be engaged to eradicate the pests.

USE OF BAIT and TRAPS

Bait

You should wear gloves when handling the bait. Follow the manufacturer's instructions and be aware of the first aid steps if poison is accidentally eaten by humans or domestic animals.

Use fresh bait, and protect it from the weather, which will otherwise spoil it.

Leave baits down for at least two weeks after all the rats and mice appear to have gone.

Traps

Traps are sold with instructions and advice on baiting, peanut butter seems to be the current favourite trap bait.



Traps work quite well with mice. Use the small mouse trap and set several fairly close together. You can go on catching mice in traps night after night – they never learn.

Rats, however, are usually cunning enough to sense and avoid traps.

Even if the trap works once, it is unlikely to be successful a second time. Tie the bait on and peg the trap down or you may lose them and the rat.

WHERE TO POSITION THE BAIT

For best results, survey the infested area thoroughly before laying the bait to determine the location of entry, nesting and feeding areas. Rodents are nocturnal and so are rarely seen, but there will be evidence of their presence - droppings, footprints, structural damage to buildings, damage to stored grain or other foods, tooth marks, burrows and holes.

BAITING TECHNIQUES

Rats

Rats are creatures of habit, they follow well defined paths or tracks between feeding, drinking and living areas. Inside buildings they tend to move close to walls rather than along an open floor. They like to feed under cover, safe from predators.

Thoroughly inspect all areas of the property for signs of pest activity.



Exterior

Check overgrown areas. Try to ascertain where pests are harbouring (living) and remove any accumulations of rubbish, try to cut off normal food supplies and deny them access to water.

1. Select bait locations between feeding and nesting areas.
2. Baits should only be placed in areas frequented by the pests and that are inaccessible to domestic animals, children, pets and wildlife and an area not liable to flooding.

3. Choose suitable bait locations, such as active rat holes, along runs and under rubbish. Place baits inside a short length of pipe with a diameter small enough so that only rodents can get at the bait. Otherwise place baits under a tile or board against a wall or fence, inaccessible to children and pets.
4. Fix the bait block with a nail or wire at the bait station to prevent the bait being dislodged from the bait station or taken away to be stored and not consumed.
5. Place a fresh block in each active rat hole, close the hole after baiting.
6. Repeat the inspection of all bait locations at seven day intervals, placing fresh blocks on each occasion only when blocks have been eaten. Normally only three to four baiting rounds are required.

Mice

Mice usually cover very limited areas and, unlike rats, don't need to drink. They are more difficult to control than rats, as their feeding patterns are more erratic.



Interior

Inspect using a torch, pay particular attention to the interior of cupboards, also check service pipe entries, hot water cylinder cupboards, under ovens and refrigerators.

1. Position baiting blocks approximately two metres apart in areas where activity is obvious.
2. When laying bait in domestic premises place baits in places such as under flooring, inside ceiling cavities, under cupboards and bulky appliances such as a refrigerator, freezer and ovens or in hot water cupboards. Remember to keep baits out of reach of young children and pets.