



Part Three Aim, Objectives and Policies

3.1 Management Aim

To support recreation and tourism by providing quality facilities and amenities for growing visitor numbers, while enhancing the riparian margins. Development will be sensitive to the surrounding natural landscape.

3.2 Objective 1 - Access

To manage reserves to provide access to Rere Falls and Rere Rockslide Reserves recognising they are increasingly popular visitor destinations. To provide vehicle access to car parking areas and pedestrian access to Wharekopae River.

Policies

RERE FALLS RESERVE

3.2.1 To maintain the driveway and the existing car park area; with the potential for vehicles to park on the grassed area to the south, should further parking be required.

Discussion

The driveway needs maintenance, but otherwise it provides an attractive entrance to the reserve.

The existing car park area is satisfactory for current levels of use. Standard car park maintenance levels should be implemented to keep the car park to a satisfactory and tidy standard. Further car parking is available on the grassed area to the south. Drainage work will need to be undertaken. Further car parking should not affect the existing mature trees.

RERE FALLS RESERVE

3.2.2 To provide an all-ability path from the car park area to the public toilets

Discussion

The driveway into the reserve from Wharekopae Road is used to provide vehicle access to the reserve and the car park area. This driveway is also the only accessway to the public toilets. An alternative all-ability (includes wheelchair access) path should be developed to provide appropriate access to the toilets.

RERE FALLS RESERVE

3.2.3 To consider providing for Freedom camping on the western side of Rere Falls Reserve area, consistent with Council's Freedom Camping Bylaw and Policy.



Discussion

There are few rural locations as rewarding for campers as this area. The rural landscape, the falls, the rockslide, trout fishing, reasonably flat paddock with mature trees make this location an attractive area to camp. Some issues would need to be considered prior to this area becoming a Freedom Camping area. These include; vehicle access to the site, increased maintenance including rubbish and waste disposal, surveillance and checking permits, and developing access to the River. Initial feedback from the community does not support Freedom Camping due to the perceived impact on security, stock, rubbish/waste and increased use of facilities. Although camping is not currently permitted, there are small numbers who illegally camp at Rere Falls Reserve.

If camping interest in this location increases and Council resolved to make Rere Falls Reserve (west) a Freedom Camping area, this information and the period available for camping would need to be publicly notified, and the Freedom Camping Bylaw 2008 amended.

RERE ROCKSLIDE RESERVE

3.2.4 To extend the existing car-park area (includes the area leased from the adjoining neighbour consistent with the lease agreement).

Discussion

One of the biggest management issues for Rere Rockslide Reserve is the ability to provide off road car parking. Council recently leased an additional area to provide for peak user times. A maximum parking of fifty cars can now be accommodated. However, a further 60 cars can be parked on the roadside at peak times.

Council will extend the existing area to provide further car parking within the reserve and road reserve (see Concept Plan).

RERE ROCKSLIDE RESERVE

3.2.5 To develop an all-ability path from the car-park area to Wharekopae River.

Discussion

An un-edged gravel track currently provides access down the steepest section of the hill slope from the car park to the river. This path should be upgraded to an all-ability standard and provide a safe and tidy approach to the River's edge. All developments at these reserves should be low-impact and made of materials in keeping with the natural rural landscape.

The mid to lower section of this reserve can become wet and soggy during the winter months. A culvert should be installed under the path, half-way down the slope, to remove excess water from this area.



3.3 Objective 2 – Facilities

To encourage and provide for passive recreation and enjoyment of Rere reserves and Wharekopae River through providing park facilities, furniture, and information.



Policies

RERE FALLS and RERE ROCKSLIDE RESERVES

3.3.1 To provide picnic tables, seating, and safety signage at Rere Falls and Rere Rockslide Reserves.

Discussion

Basic park facilities are provided at both reserves. However these need upgrading and more picnic tables should be provided. Consideration should be given to providing some extra long tables that can accommodate large family groups. All facilities, including furniture, will need to be vandal resistant, but hopefully still retain an organic look appropriate in this rural landscape. If wood is not durable, steel, stone or concrete may need to be considered. Existing rubbish bins will be removed and replaced with signage advocating a “pack in/pack out” policy towards rubbish.

RERE FALLS RESERVE

3.3.2 To upgrade and maintain public toilet facilities at Rere Falls Reserve.

Discussion

Public toilets are provided at Rere Falls Reserve. They require some basic upgrade work including painting and signage and annual maintenance checks to ensure they keep up with Council specifications for public conveniences.

RERE ROCKSLIDE RESERVE

3.3.3 To provide new toilet facilities at Rere Rockslide Reserve and maintain the toilets to an appropriate standard.

Discussion

The current Long Term Council Community Plan (LTCCP) forecasts expenditure to replace the existing longdrop toilet with a Permaloo. The new toilets will be located in its existing location, in close proximity to the carparking area for easy access, maintenance and easy access to water supply.

3.4 Objective 3 – River and river margins

To improve the reserve's riparian margins through native riparian planting and the removal of plant pests.



Policies

RERE FALLS and RERE ROCKSLIDE RESERVES

3.4.1 To remove plant pests from Rere Falls Reserve and Rere Rockslide Reserve on an ongoing basis as resources permit.

Discussion

Remove plant pests consistent with the Regional Plant Pest Strategy and the Streamside Planting Guide.

3.4.2 To establish native riparian planting (supported by stock-proof fencing) at Rere Rockslide Reserve, and succession tree planting at both reserves.

Discussion

There are currently adequate shade trees at the reserves, although succession and additional planting should be considered.

The esplanade area of the Rere Rockslide will be fenced with stock-proof fencing (and a style provided for visitor access) and riparian planting undertaken on an ongoing basis to display good environmental management practices in an effort to improve river water quality and enhance the ecological health at the River. A guide can be taken from the species found in the adjoining Makaretu Scenic Reserve. Unfortunately the Rere Falls site does not lend itself well to developing a riparian margin, although the northern side of the Falls reserve has a reasonable riparian margin due to stock-proof fencing regenerating margins.

Any succession planting of amenity trees will require stock-proof surrounds to reduce damage.

RERE FALLS RESERVE

3.4.3 To remove Willows at the top of Rere Falls and to remove debris from the bottom of the Falls and the Rockslide. Replace Willows with native trees where practical.

Discussion

Some willows from the top of Rere Falls have recently been removed. Willows from the top of Rere Falls need to be removed for several reasons, including river management and enhancing the width of the Falls, and clearing the waterway for the pump that takes water to supply the public toilet. Removal of Willows would also improve visibility from Wharekopae Road leading up to the bridge. Willows can enhance bank stability, however they can also cause a nuisance down stream by impeding and reducing the load a river can sustain. Native trees such as Kanuka and Totara are preferred species for their ability to stabilise river banks, without restricting the flow of water².



² Recommended by Andrew Walker, Reserves Supervisor, June 2010



RERE FALLS and RERE ROCKSLIDE RESERVES

3.4.4 To remove logs, debris and other rubbish from the base of the Falls and the Rockslide annually or as resources permit.

Discussion

The bottom of the falls collects debris such as logs and rubbish. This debris should be removed annually for amenity values, river management and public safety.

3.5 Objective 4 – Management

To provide facilities and information for growing visitor numbers. Any developments are sensitive to the reserves natural setting and are maintained to a good standard.



Policies

RERE FALLS and RERE ROCKSLIDE RESERVES

3.5.1 To manage these reserves recognising the importance of their natural setting. Any development should occur in a visually sensitive way.

Discussion

Part of the attraction of these reserves, in particular the Rere Rockslide is the 'adventure' aspect of sliding down the craggy rock face. Another just as important virtue of these reserves is their low impact management and limited development. All this is enhanced by the rolling high country in the background and the rural experience. Any development of these sites must be sympathetic to its surroundings to ensure the natural setting is not impacted either visually or environmentally. Natural colours and low-impact designs should be chosen wherever possible.

RERE FALLS and RERE ROCKSLIDE RESERVES

3.5.2 To provide for increasing international and domestic visitors using international symbols on signage. Interesting historical, environmental, and recreation information should be displayed on vandal resistant interpretive panels or storyboards. Information should also be provided on Council's website.

Discussion

All signage should include international symbols where possible to provide for international visitors. Currently there is a proliferation of signage at both reserves which should be rationalized. Necessary information should, where possible, be included on reserve's entrance signs.

Interpretive panels could include historical content, such as information on the old Rere Hall, the power station and its remnants, the Ngatapa Pa (which is visible from Rere Rockslide Reserve), Te Kooti's retreat through this area, as well as travel times from Gisborne, safety information, and cell phone coverage.

The signage should also advocate Council's "pack in/pack out" rubbish policy, (encouraging visitors to take rubbish away with them) and Council's "No dogs allowed" policy. Information should also be provided on Council's website.

RERE FALLS and RERE ROCKSLIDE RESERVES

3.5.3 To upgrade and maintain stock proof fencing at both reserves, and establish fencing along the area at Rere Rockslide Reserve identified for riparian planting.

Discussion

Grazing is used to maintain grass at the reserve, especially in areas where the mower cannot easily access, and for in-between mowing periods. Fences at both Rere Falls and Rere Rockslide Reserves should be maintained to a stock proof standard. Cattle stops are provided at both reserves to manage the entrance ways. Stock-proof fencing will be used to develop a riparian margin along the esplanade area of Rere Rockslide Reserve between the adjoining neighbours property and Wharekopae River. Neighbours wishing to use either reserve to graze stock will be encouraged to enter an agreement with Council. Cattle should not be grazed at either site due to potential damage to the reserves terrain, stream banks, and water quality. Grazing should not prevent public access to the reserves.

RERE FALLS and RERE ROCKSLIDE RESERVES

3.5.4 Tourism/commercial operators may require a permit/license to operate from these reserves, consistent with Council's Concessions Policy and the Reserves Act 1977.

Discussion

A number of commercial operators run day trips to Rere Rockslide. To accommodate these user groups, support tourism in the area, as well as the potential to gain some financial return to support the development and maintenance of these reserves, concessions should be used to manage these activities. Staff from Community Facilities are currently preparing a Concessions Policy which will be used to consider such applications. Under the Reserve Act any lease to undertake activities not considered in a management plan will require public notification and consultation.

RERE FALLS and RERE ROCKSLIDE RESERVES

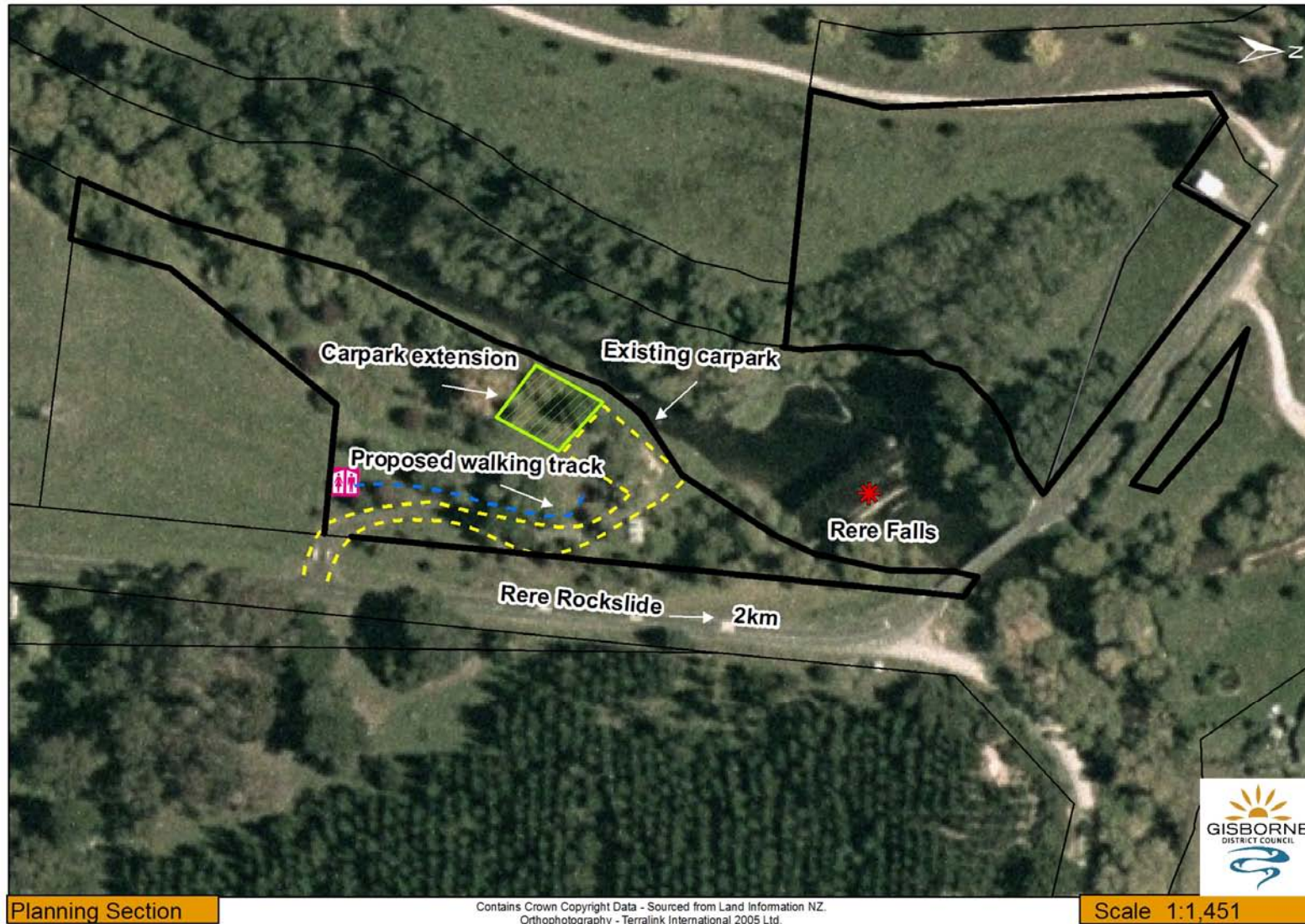
Concept Plans

3.5.5 To implement objectives and policies consistent with the following Concept Plans, where practical.

Discussion

The following Concept Plans provide a visual representation of objectives and policies included in this Management Plan.

Rere Falls Reserve Concept Plan



Rere Rockslide Reserve Concept Plan

