

# SUPPORTING INFORMATION DOCUMENT FOR SPEED MANAGEMENT PLAN

PREPARED FOR TAIRĀWHITI GISBORNE DISTRICT COUNCIL

March 2021



## Section 1: Priority School List in Gisborne City

Rank	School	School Zone Programme	Weighted Total
1	Gisborne Girls High School	YES	300
2	New Life Christian School	YES	285
3	Mangapapa School	YES	270
4	Gisborne Boys High School		255
5	Riverdale School		255
6	Kaiti School	YES	250
7	Makauri School	YES	240
8	Ngatapa School	YES	225
9	Rere School	YES	225
10	Gisborne Intermediate School		225
11	Ilminster Intermediate School		225
12	Lytton High School		220
13	Te Hapara School	YES	220
14	Te Wharau School	YES	220
15	Wainui Beach School	YES	220
16	Te Kura Kaupapa Maori O Nga Uri A Maui	YES	220
17	Elgin School	YES	205
18	Campion College	YES	220
19	Central School	YES	220
20	Te Karaka Area School	YES	220
21	Muriwai School		220
22	Te Kura Kaupapa Maori O Mangatuna		220
23	Ormond School	YES	190
24	St Marys Catholic Primary School	YES	175
25	Makaraka School	YES	175
26	Awapuni School		175
27	Ngata Memorial College	YES	165
28	Cobham School		160
29	Sonrise Christian School		160
30	Westmount School		160
31	Potaka School		150
32	Rangitukia School		150
33	Tiniroto School		150
34	Waerenga o Kuri School		150
35	Whangaga School		150
36	Waikirikiri School		145
37	Manutuke School		135

Rank	School	School Zone Programme	Weighted Total
38	Hiruharama School		130
39	Mata School		130
40	Motu School		130
41	Waipaoa Station School		130
42	Makariaka School	YES	125
43	Tolaga Bay Area School		125
44	Te Kura o Whatatutu		120
45	Te Wara O Rerekohu Area School		115
46	Hatea A Rangi School		100
47	Matawai School		100
48	Patutahi School		100
49	Tikitiki School		100

DRAFT

## Section 2: List of Rural Schools in the Gisborne District

No.	School	Years	Area
1	Potaka School	1-8	Potaka
2	TKKM o Tapere-Nui-A-Whatonga	1-8	Rangitukia
3	Hiruharama School	1-8	Hiruharama
4	Makarika School	1-8	Makarika
5	Mata School	1-8	Tokomaru Bay
6	TKKM o Mangatuna	1-8	Tolaga Bay
7	Motu School	1-8	Motu
8	Whangara School	1-8	Whangara
9	Makauri School	1-6	Makauri
10	Rere School	1-8	Rere
11	Ngatapa School	1-8	Ngatapa
12	Waerenga-O-Kuri School	1-8	Ngatapa
13	Tiniroto School	1-8	Tiniroto
14	Muriwai School	1-8	Muriwai

## Section 3: Road Safety Calendar (July 2019 to January 2020)

Activity	Dates	Focus	Stakeholders	Alignment to Road Safety Strategies or local priorities
School Safety	ongoing	School environment Speed Crossing provisions Traffic volumes	GDC Schools Contractors Residents	Safe roads & roadsides Safe speeds Safe vehicles Safe road use
Piri ke Te Ora – Restraints Wananga	August	Seatbelt & child Restraints	GDC NZ Police, Tairāwhiti Reap, Te Aroha Kanarāhi Trust Fire & Emergency Services	Safe road use Enable smart and safe choices on the road. <ul style="list-style-type: none"> <li>local priority</li> </ul>
Bike Ready - ACC/NZTA	2019 - 2020	Cycle Education Programme in schools & community	GDC Cycle Gisborne Local schools ACC NZTA	<ul style="list-style-type: none"> <li>Local priority</li> <li>Enable smart and safe choice on the road</li> </ul>
Te Wiki o Te Reo	September	Nga Ara Pai Promotions	TWOA Turanga FM	Improving the safety of young drivers Enable smart and safe choice on the road
Nga Ara Pai – Driver Licence	Ongoing – July 2019 June 2020	Young Drivers Education	NZ Police GDC McInnes Driver Training Passrite Driving Academy	Improving the safety of young drivers Enable smart and safe choice on the road. <ul style="list-style-type: none"> <li>safe speed</li> <li>local priority</li> </ul>
Whakamanahia Drink Drive Programme	Bimonthly	Alcohol Awareness	GDC NZ Police FENZ Evan Funeral Services Hauora Tairāwhiti Guest speakers	Reducing impaired driving Improving the safety of young drivers <ul style="list-style-type: none"> <li>local priority</li> </ul>
East Coast – Heartland Games	September	Alcohol Awareness / Drink Driving	GDC ECRFU	Reducing impaired driving
Back to Schools Road Safety Campaign	Start of each school term	Speed Restraints Distraction	GDC NZ Police SADD Turanga Hauora Plunket	<ul style="list-style-type: none"> <li>Safe speeds</li> <li>Safe roadside</li> </ul>

Activity	Dates	Focus	Stakeholders	Alignment to Road Safety Strategies or local priorities
Whakamanahia in SCHOOLS	October (Pilot) Ongoing	Alcohol Education	GDC NZ Police FENZ Evan Funeral Services Hauora Tairāwhiti Guest presenters	Reducing impaired driving Improving the safety of young drivers <ul style="list-style-type: none"> <li>local priority</li> </ul>
Road Safety Campaign	Labour Weekend - October	Drink Driving	GDC	<ul style="list-style-type: none"> <li>local priority</li> <li>Enable smart and safe choice on the road</li> </ul>
East Coast WOF	November	Safe vehicles	GDC EIT NZ Police – support	<ul style="list-style-type: none"> <li>safe vehicles</li> </ul>
Ride Forever Motorcycle Education Breakfast	November	Motorcycle education	ACC GDC NZ police GIS motorcycles communities	<ul style="list-style-type: none"> <li>Make motorcycling safer</li> </ul>
Ruatoria Whanau Day	November	Road Safe Promotions – access to driver licence programme, Whakamanahia info, EC WOF services	GDC NZ Police CAYAD	<ul style="list-style-type: none"> <li>Enable smart and safe choice on the road</li> </ul>
Student Traffic Safety Teams (School Patrols)	November	Education / Rewards day for School Patrols	GDC NZ police	<ul style="list-style-type: none"> <li>local priority</li> </ul>
Tokomaru Bay Whanau Day	December	Road Safe Promotions – access to driver licence programme, Whakamanahia info, EC WOF services	GDC NZ Police Ka Pai Kaiti CAYAD	<ul style="list-style-type: none"> <li>local priority</li> <li>Enable smart and safe choice on the road</li> </ul>
Fatigue Stop	December	Alcohol Education	GDC NZ Police Community group	<ul style="list-style-type: none"> <li>local priority</li> </ul>
Christmas / New Year's Road Safety Campaign	December - Jan	Alcohol / Speed Education	GDC NZ Police	<ul style="list-style-type: none"> <li>local priority</li> <li>Enable smart and safe choice on the road.</li> <li>Ensure roads and roadsides support safer travel.</li> <li>Encourage safe vehicles</li> </ul>

## Section 4: Review of Gisborne District Crash History

A review of NZTA's Crash Analysis System (CAS database) for the Gisborne District during the past 10 years (2010-2019) shows the number of fatal and serious crashes has fluctuated with a downward trend in the first 6 years (2010 to 2015) but then increasing again from 2016.

In 2019, the total number of reported fatalities and serious injuries in the Gisborne District was 4 and 45 respectively.

It is noted that these are the crashes that were attended by the Police and have a Traffic Crash Report (TCR) completed. These statistics may not cover all crashes that have occurred in the area, given there is generally a higher underreporting rate on rural roads and in remote locations.

The analysis of the data for Fatal and Serious (F&S) Crashes which occurred in Gisborne District during the 2010-2019 ten-year period (including the State Highways) indicates the following:

- There have been 36 fatal and 245 serious injury crashes.
- These crashes resulted in 45 deaths, 308 serious and 1,235 minor injuries.

The detailed number of fatal and serious injury crashes by year, and by months during 2010-2019 are illustrated in Figure S-1 and Figure S-2.

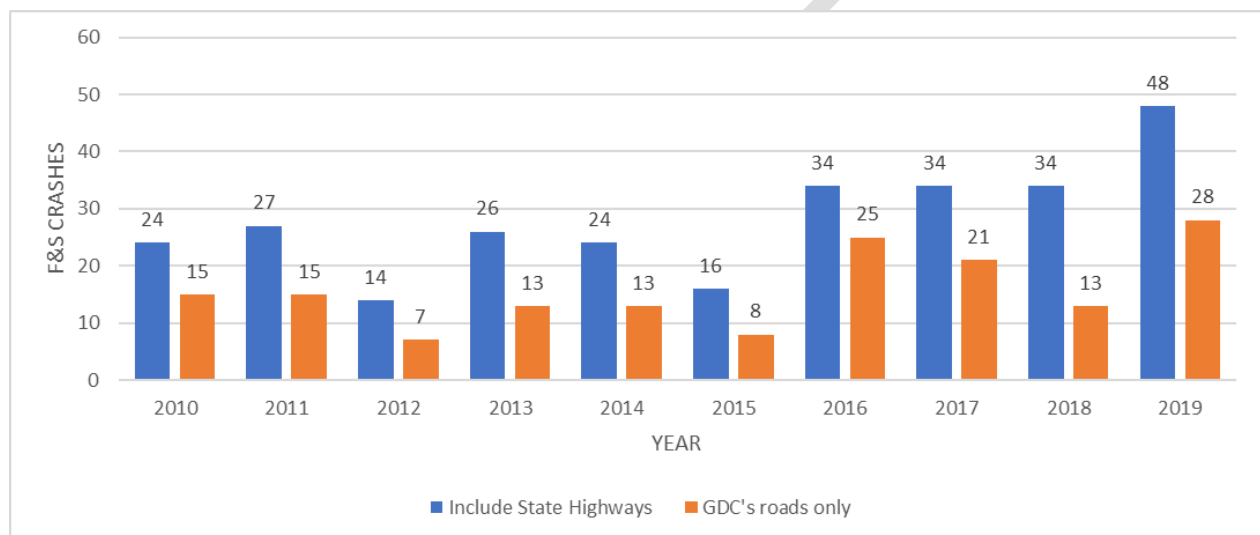


Figure S-1: Fatal and serious injury crashes by year in Gisborne District during 2010-2019

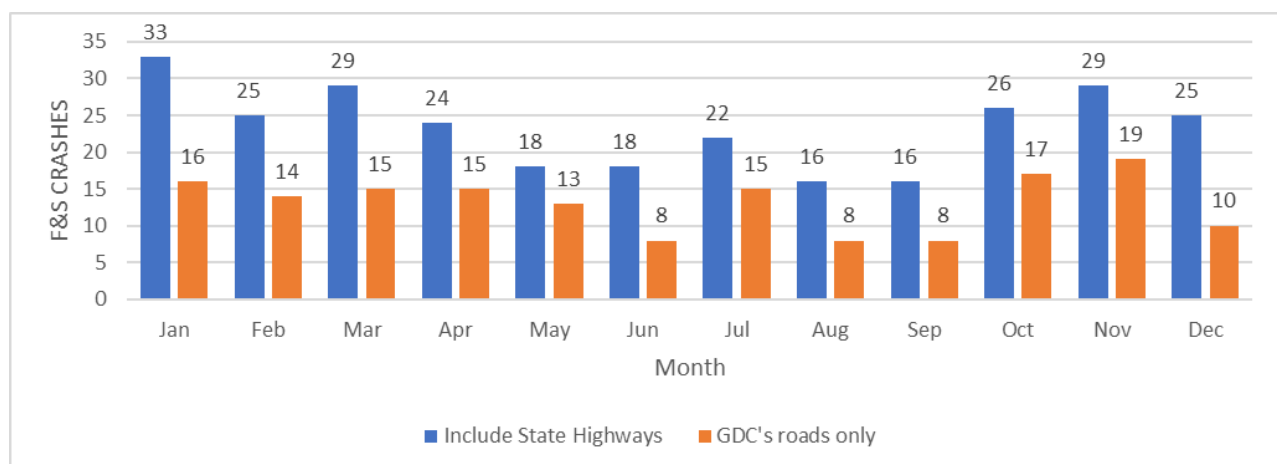


Figure S-2: Fatal and serious injury crashes by months in Gisborne District during 2010-2019

As can be seen, the F&S crash rates were high during spring and summer months. This is possibly due to increased visitors to the region over the spring and summer months and increased likelihood of people being more active and travelling within the region over these time periods.

Figure S-3 shows locations and density of all fatal and serious injury crashes in the Gisborne District during the 10-year period (2010-2019) including the State Highway network. Figure S-4 shows crashes on the local roads in the District only.

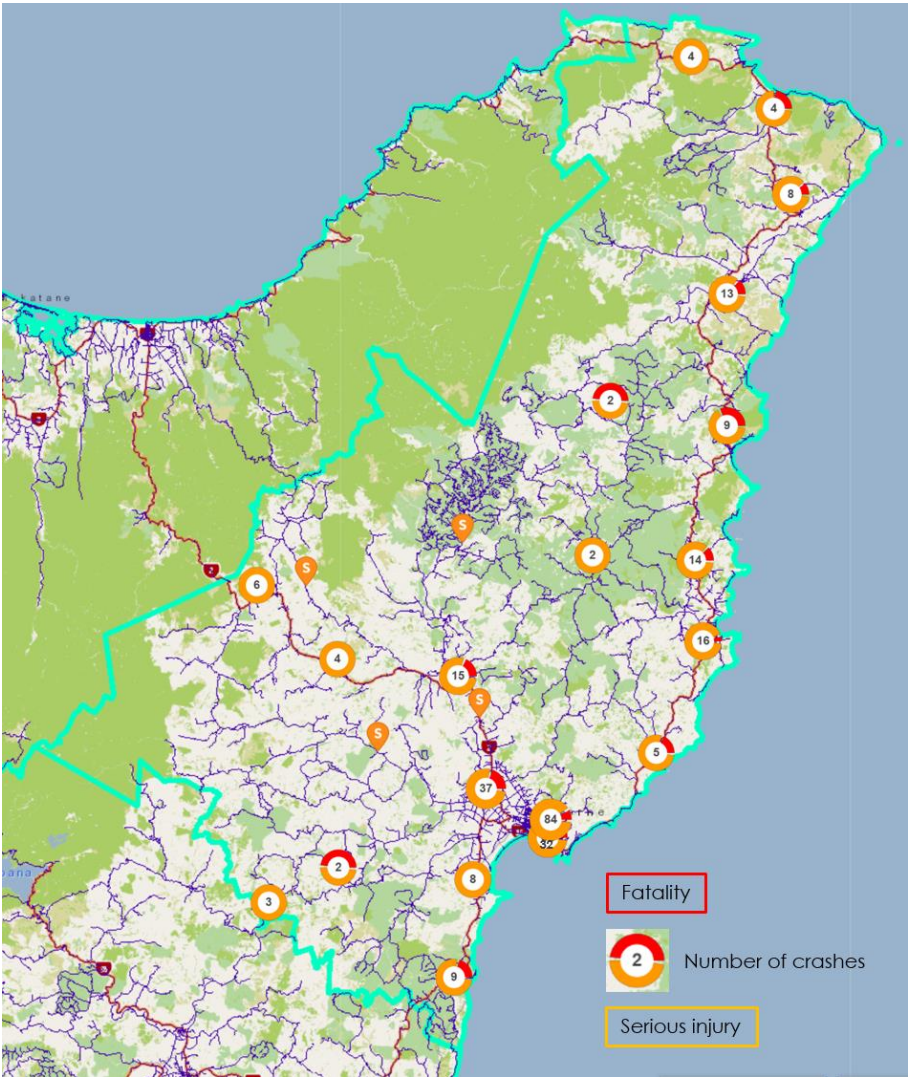


Figure S-3: Fatal and serious injury crashes in Gisborne District (including State Highways), 2010-2019





The top three contributing factors to fatal and serious injury crashes are presented in the following table. It is clearly shown that speed and alcohol impairment are higher than the national data.

Table S-1: The top three contributing factors to F&S crashes in Gisborne District

Factor	Gisborne District		New Zealand	
	Including SHs	GDC's roads only	Including SHs	Local roads only
Alcohol	38%	40%	23%	24%
Poor handling	35%	30%	-	-
Travel speed	28%	44%	21%	22%

The relationship between speed and road trauma is well-established internationally which is why setting safe and appropriate speed limits is important.

For Gisborne District, the percentage of all crashes involving inappropriate speed<sup>1</sup> in the 2010-2019 ten-year period has varied from over 10% up to around 20%. The total number of crashes recorded in the district over the last 10 years was 3,865 crashes, of which 2,063 crashes happened on Gisborne District roads.

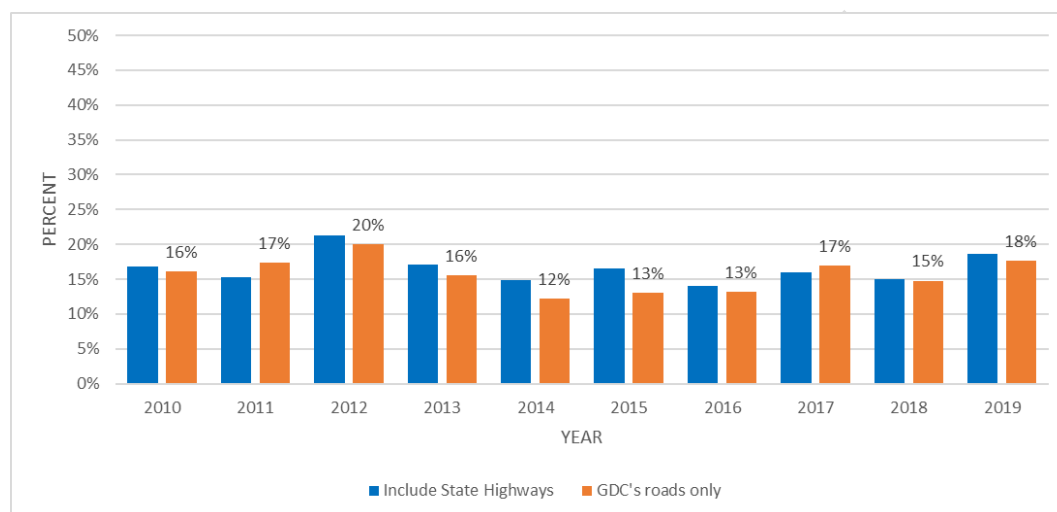


Figure S-5: Percentage of all crashes involving inappropriate speed in Gisborne District, 2010-19

However, the percentage of death and serious injury crashes involving inappropriate speed is much higher, exceeding 20% most years, with the highest of 46% on the District's roads in 2013.

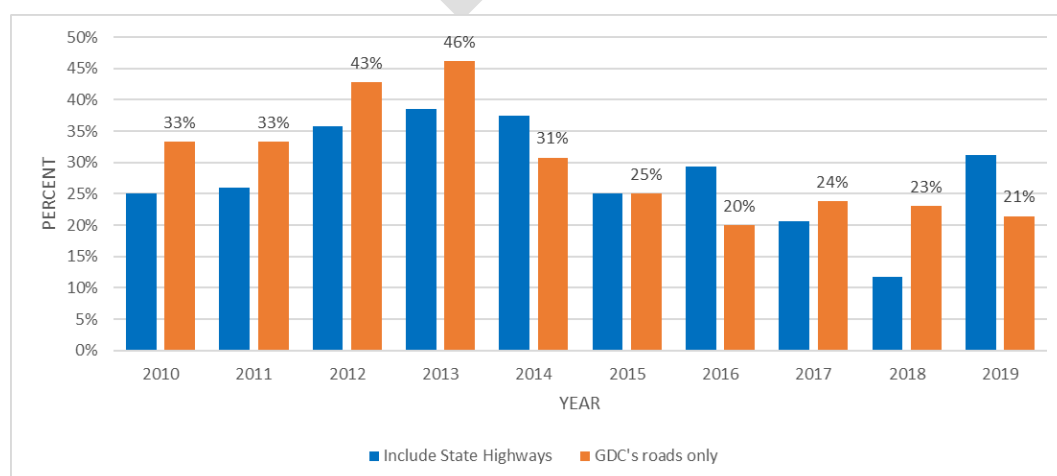


Figure S-6: Percentage of fatal and serious injury crashes involving inappropriate speed in Gisborne District, 2010-19.

<sup>1</sup> Crashes code:110-113;115-119 and 518

Under the Road to Zero strategy, we can make a significant change in the number of death and serious injuries on our roads by implementing a good speed management programme. If drivers are driving at safe and appropriate speeds, the community and social losses will reduce considerably through possible lives saved and the reduction in the number of people who suffer from road trauma. Table S-2 gives some insights about crashes involving inappropriate speed, between 2010 and 2019, in Gisborne District.

Table S-2: Other factors for the crashes involving inappropriate speed in Gisborne City.

Crashes involving inappropriate speed	Gisborne District	
	Including SHs	Local roads only
Occurred in areas with a $\leq 50\text{km/h}$ speed limit	52%	73%
Occurred during the night	49%	47%
Occurred at intersections	32%	39%
Involving cyclists or pedestrians	2%	3%

We also know that:

- 54% of the crashes involving inappropriate speed occurred in the Gisborne city area.
- Over 90% of crashes involving pedestrians occurred in areas with a 50km/h speed limit (12 out of 13 crashes).

While the evidence of crashes with inappropriate speed as a factor is very clear throughout the Gisborne District, in particular along the State highways and within the Gisborne City urban area, it is not as obvious in the other townships within the district, which is likely due to the low number of crashes being reported.

## S.1 Reported Crashes in Gisborne City

Similarly, the CAS database has been used to understand the reported crash history in the Gisborne City urban area over the last 10 years (2010-2019).

The analysis of the data for the reported fatal and serious injury crashes in the Gisborne City urban area during the 2010-2019 ten-year period reveals:

- There have been 8 fatal and 98 serious crashes.
- These crashes resulted in 10 deaths, 109 serious and 634 minor injuries.

The detailed number of fatal and serious injury crashes by year and by month between 2010 and 2019 are illustrated below.

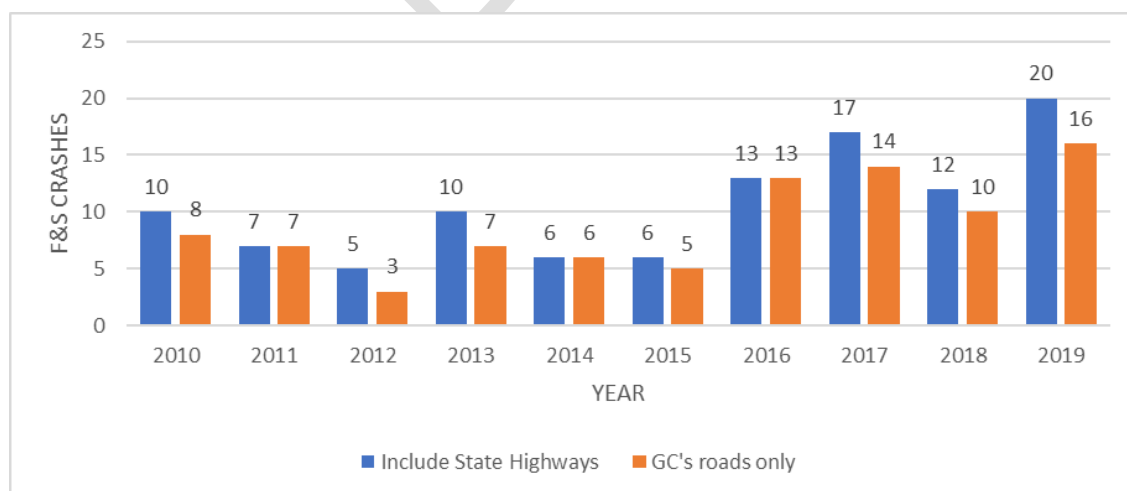


Figure S-7: Fatal and serious injury Crashes by year in Gisborne City, 2010-2019



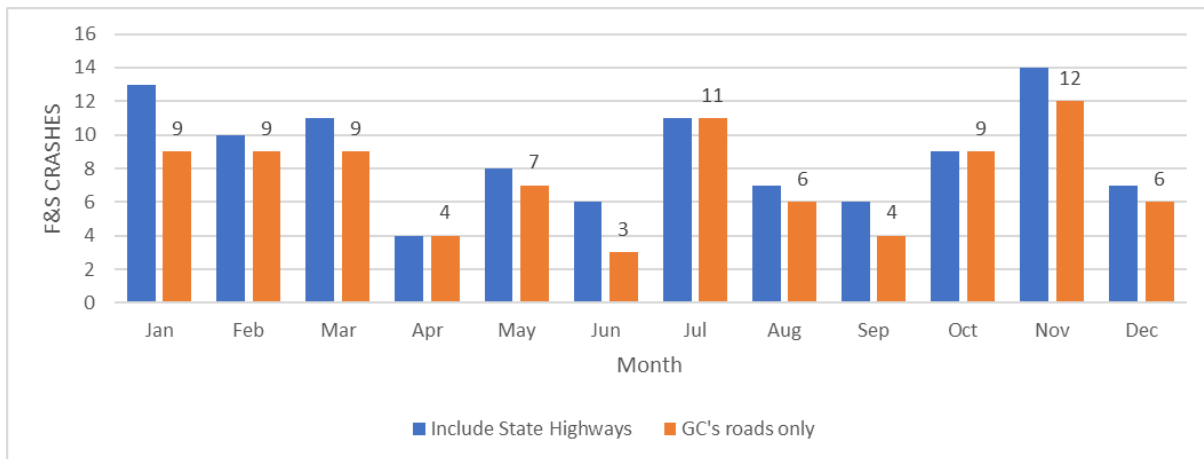


Figure S-8: Fatal and serious injury Crashes by months in Gisborne City, 2010-2019

Similar to the wider Gisborne District data, the recorded F&S crashes were high during spring and summer, however there was a spike in F&S crash numbers in July which indicates an anomaly.

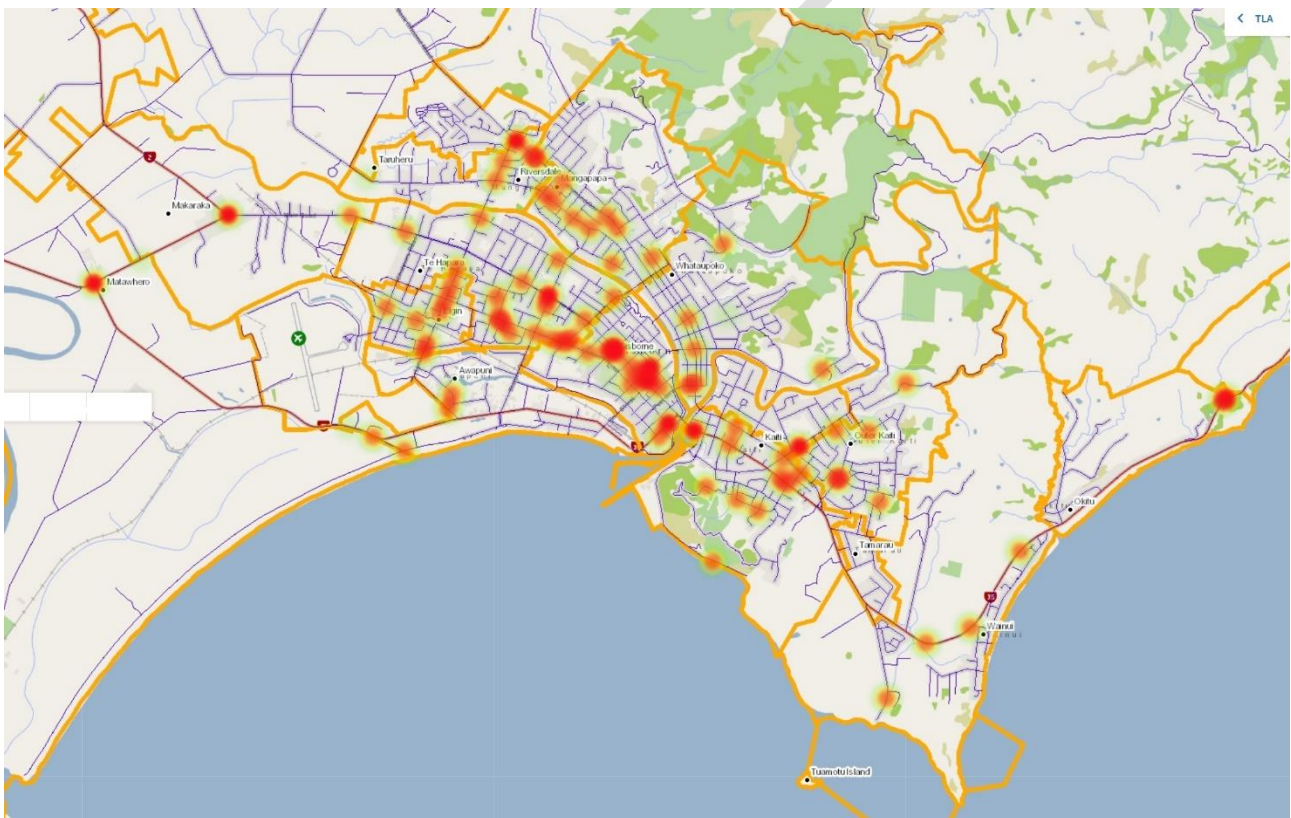


Figure S-9: Fatal and serious injury crashes in Gisborne City, 2010-2019 (heatmap)

Travel speed is among the top three contributing factors to fatal and serious injury crashes in Gisborne City, as provided in the following table. Gisborne City's results are similar to the national results for travel speed, while alcohol factors are much higher than reported nationally.



Table S-3: The top three contribution factors to F&S crashes in Gisborne City

Factor	Gisborne City		New Zealand (urban roads)	
	Including SHs	GC's roads only	Including SHs	Local roads only
Alcohol	40%	38%	25%	29%
Poor observation	33%	31%	-	-
Travel speed	25%	26%	24%	28%

Figure S-10 and Figure S-11 show the percentage of all crashes involving inappropriate speed in the 2010-2019 ten-year period varying from 9% to 17%, while the fatal and serious injury crashes involving inappropriate speed generally had higher rates with most years being over 20% of all crashes. The later years have seen a reduction in speed related crashes, which could indicate that speed management measures being implemented within the urban area are beginning to have an effect on reducing speed.

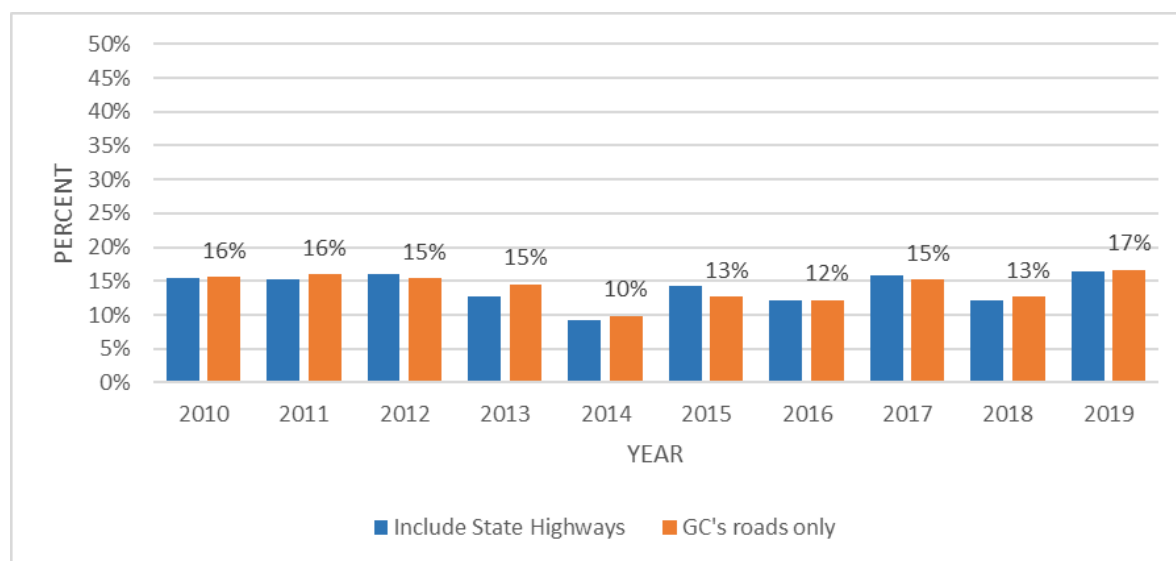


Figure S-10: Percentage of all crashes involving inappropriate speed in Gisborne City, 2010-2019

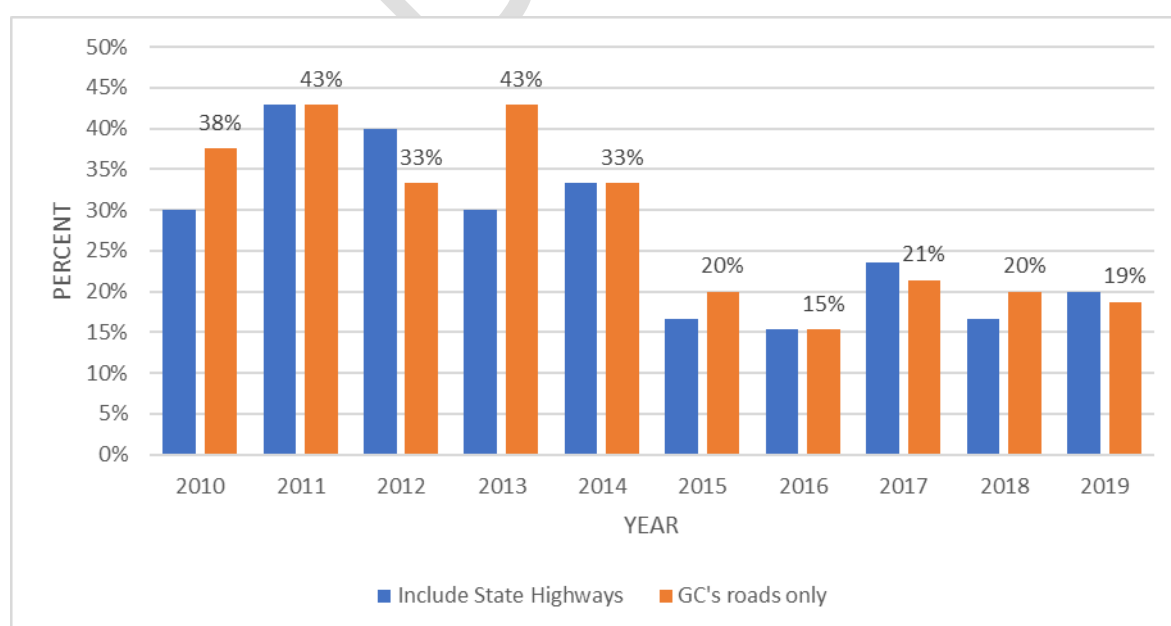


Figure S-11: Percentage of fatal and serious injury crashes involving inappropriate speed in Gisborne City, 2010-2019

Other significant trends extracted from the crash data are listed in the following table:

Table S-4: Other factors for the crashes involving inappropriate speed in Gisborne City.

Crashes involving inappropriate speed	Gisborne City	
	Including SHs	Local roads only
Occurred in areas with a <=50km/h speed limit	92%	97%
Occurred during the night	55%	56%
Occurred at intersections	48%	49%
Involving cyclists or pedestrians	3%	3%

## S.2 Crashes Related to Schools

The District has a total of 50 schools, that enrol over 9,000 children each year. National statistics indicate that an average of 13% of children would walk and or cycle to school unattended, being approximately 1,170 students.

While there are no crashes involving inappropriate speed recorded in the immediate school zones, there were a significantly high number of crashes that happened in the vicinity of schools where the posted speed limit is 50km/h.

Table E-5 summarises the recorded trauma in the last 10 years<sup>2</sup> related to the immediate school zone and the wider journey in Gisborne District (noting that all recorded crashes are within the Gisborne urban area).

Table S-5: F&S crash related to schools.

Injury type	School zone (250m)	Journey
Fatal	0	1
Serious	2	5
Total F&S	2	6
Minor	20	29
Total Injury	22	35

## S.3 Te Araroa and Matawai Townships Crash Review

For the purposes of this draft document, a review of two townships was undertaken at the request of Gisborne District Council. The townships are Te Araroa and Matawai.

### S.3.1 Te Araroa Township

Te Araroa township is in the north of the Gisborne District, approximately 175km from Gisborne city, along State Highway (SH) 35 south east of Hicks Bay. The posted speed limit in the township is 70km/h as shown in Figure S-12.

<sup>2</sup> Tairewhiti Roads, School Safety Assessment, April 2018

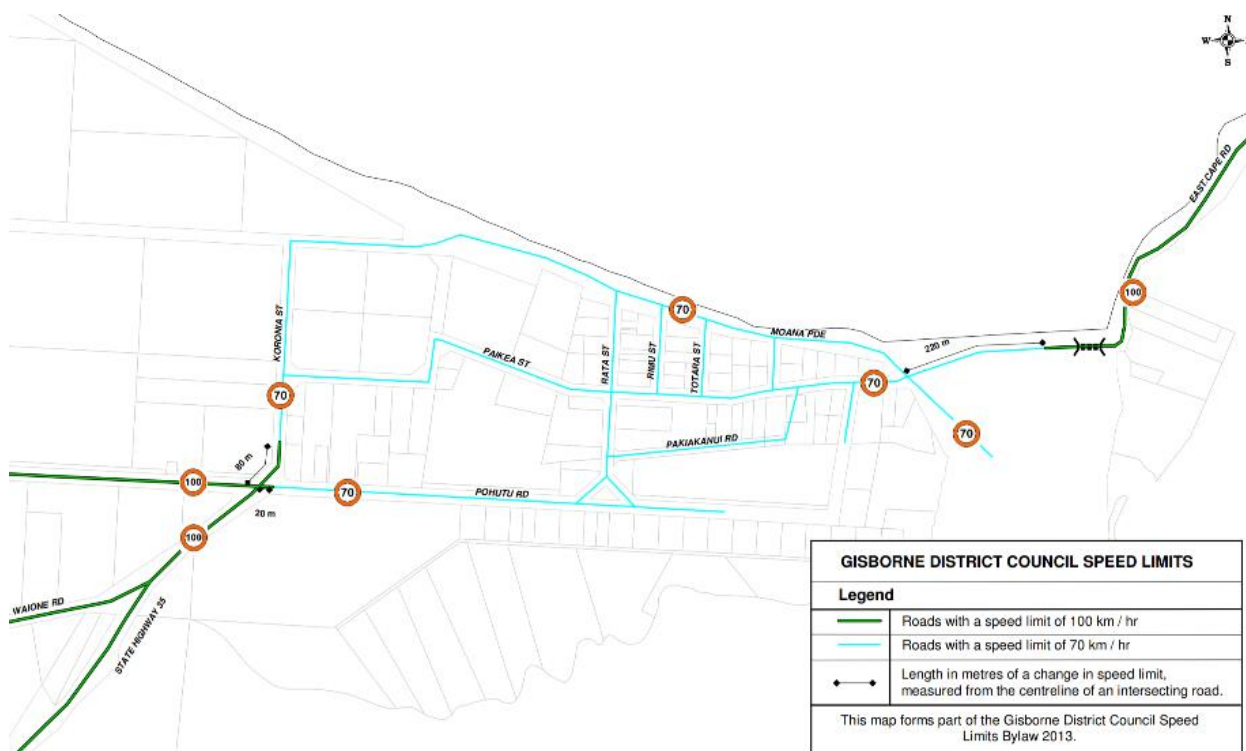


Figure S-12: Posted speed limit in Te Araroa township

Te Araroa is a popular tourist destination as it provides access to the most Easterly point on mainland New Zealand, Maori history tours and other tourist attractions.

Over the last 10 years (2010-2019), there were 74 crashes recorded in the Te Araroa region with the majority happening along SH35 (shown in Figure S-13). These crashes resulted in 2 fatalities, 7 serious injuries and 15 minor injuries.

Travel speed was a factor in 14 crashes; one of those was a F&S crash which resulted 1 fatality and 2 serious injuries.

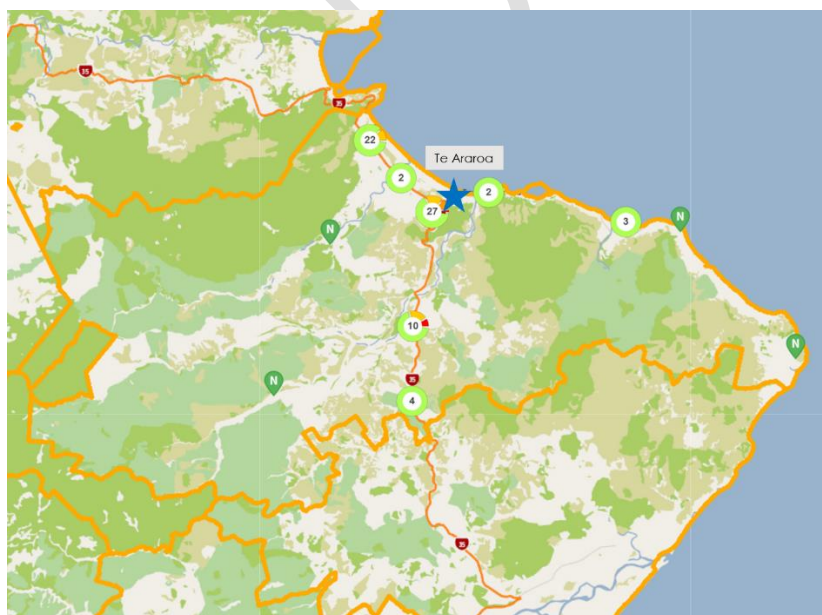


Figure S-13: Crashes recorded in Te Araroa region, 2010-2019

In Te Araroa township and the immediate area, 9 crashes have been recorded over the 2010-2019 ten-year period resulting in no injury or fatal crashes (Figure S-14). Travel speed was a factor in 3 of these crashes; detail of the reported crashes and their locations is provided in Figure S-14 and Table S-6.

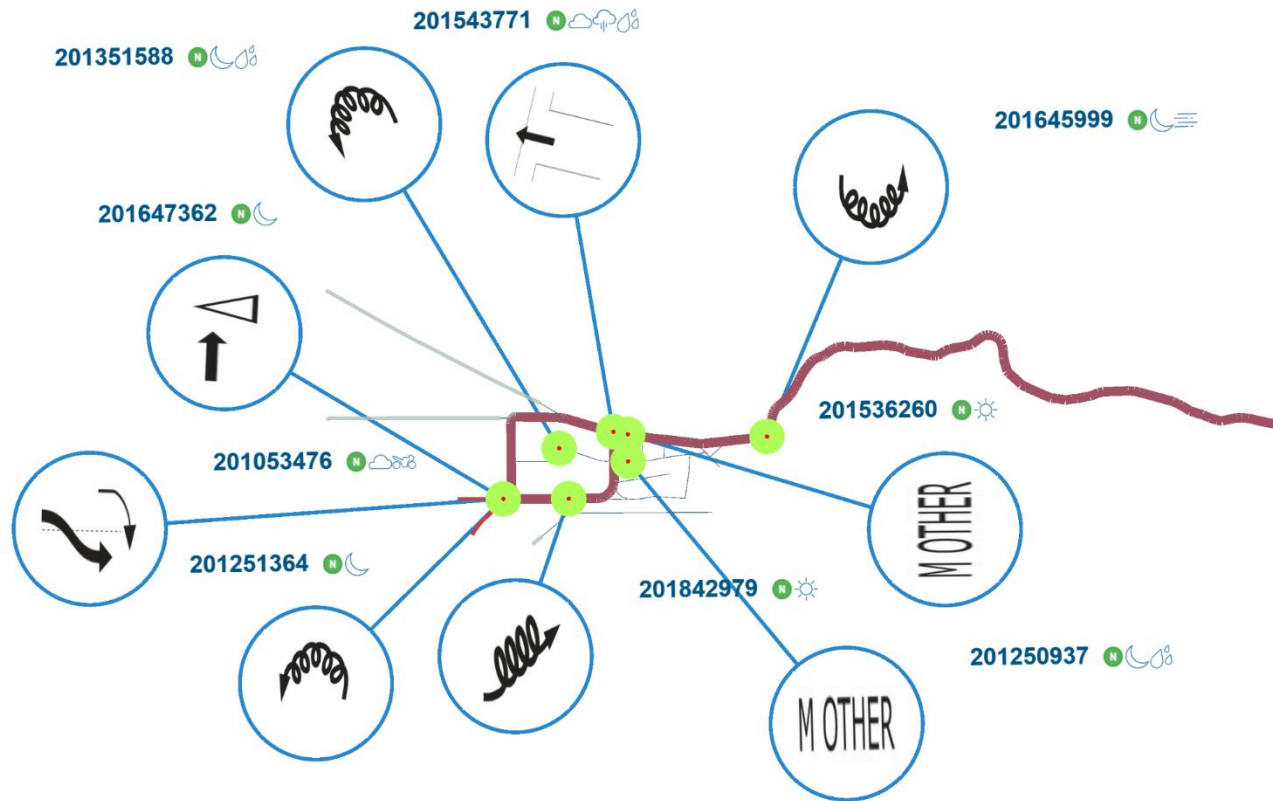


Figure S-14: Collision diagram in Te Araroa township and its vicinity, 2010-2019

Table S-6: Detailed crash summary for Te Araroa township, 2010-2019

Location	Code	Date	Speed limit	Description	Inappropriate speed factor
In Te Araroa township	201543771	18/7/2015 Saturday 16:20	70 km/h	A northbound vehicle travelling on Rata Street missed the intersection with Moana Parade, hit road kerb and a 3-foot-high stone wall on north side of Moana Parade	Yes
	201351588	20/04/2013 Saturday 2:45	70 km/h	A northbound vehicle travelling on Paikea Street lost control on a curve	No
	201250937	05/04/2012 Thursday 00:00	70 km/h	A vehicle parking on side of the road on Paikea Street was damaged on its right rear door	No
	201842979	01/07/2018 Sunday 10:00	70 km/h	An eastbound vehicle travelling on Pohutu Road lost control on a straight section	No
	201536260	02/04/2015 Thursday 15:15	70 km/h	A vehicle reversing out of a driveway onto Mimmu Street, failed to notice and hit a parked vehicle	No



Location	Code	Date	Speed limit	Description	Inappropriate speed factor
SH35	201053476	06/6/2010 Sunday 15:29	100 km/h	An eastbound motorcyclist on SH35 tried to overtake a truck, hit the truck which was turning right	No
	201647362	02/09/2016 Friday 19:30	100 km/h	A northbound vehicle travelling on SH35 hit a stray animal	No
	201251364	05/5/2012 Saturday 5:30	100 km/h	A northbound vehicle travelling on SH35 failed to negotiate a corner and lost control	Yes
East Cape Road	201645999	14/8/2016 Sunday 3:00	100 km/h	An eastbound vehicle failed to negotiate a curve and lost control	Yes

Within the 70km/h speed restricted urban area of the town, 5 non-injury crashes occurred over the last ten years (2010-2019). Inappropriate speed was a factor for one of these crashes, which occurred at the intersection of Moana Parade and Rata Street.

None of those crashes that occurred in the township involved pedestrians or cyclists.

### S.3.2 Matawai Township

The Matawai township is located at the western-most location of the Gisborne District, and is the first port of call for visitors to the Gisborne District after a long drive through the scenic Waioeka Gorge on SH2. The posted speed limit in the township is 50km/h as shown in Figure S-15.

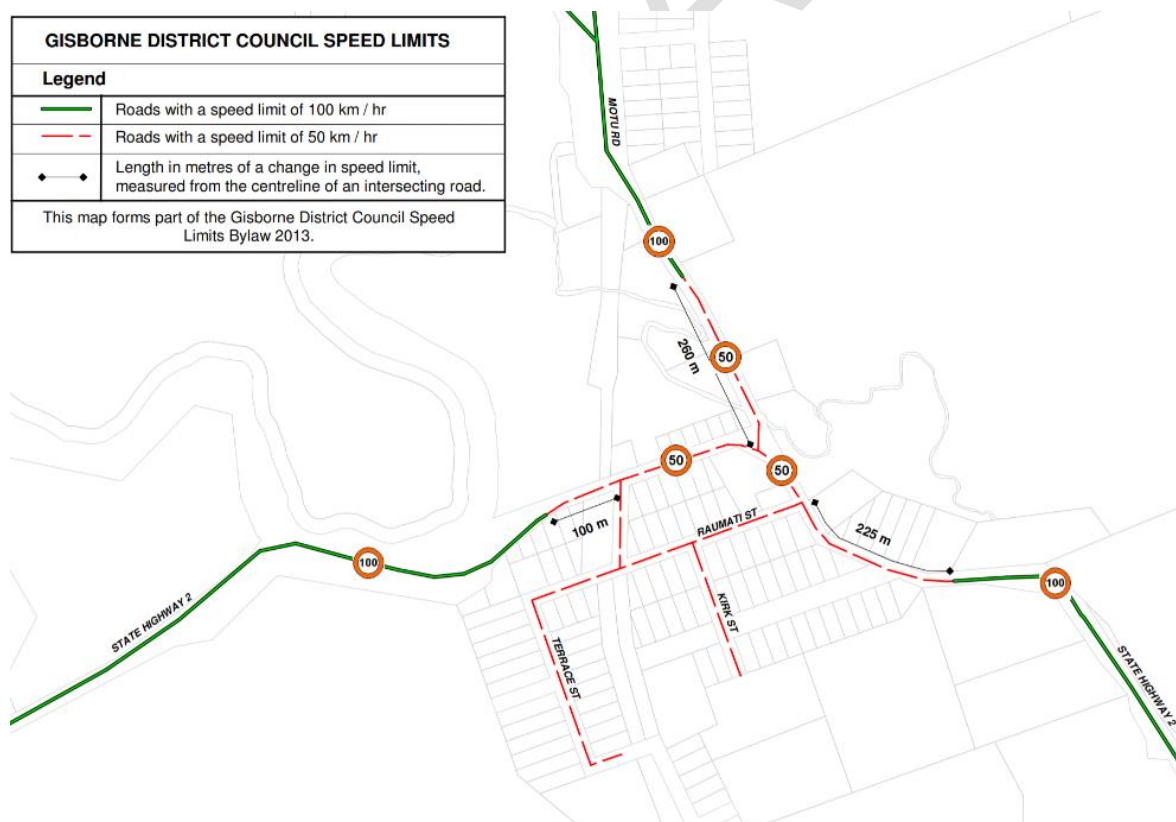


Figure S-15: Posted Speed Limits in Matawai township

Over the last 10 years (2010-2019), there have been 48 crashes recorded in the Matawai region with most of them occurring along SH2 (shown in Figure S-16). These crashes resulted in 7 serious injuries and 25 minor injuries.

Travel speed was a factor in 13 of the crashes, with two of those resulting in serious injuries.

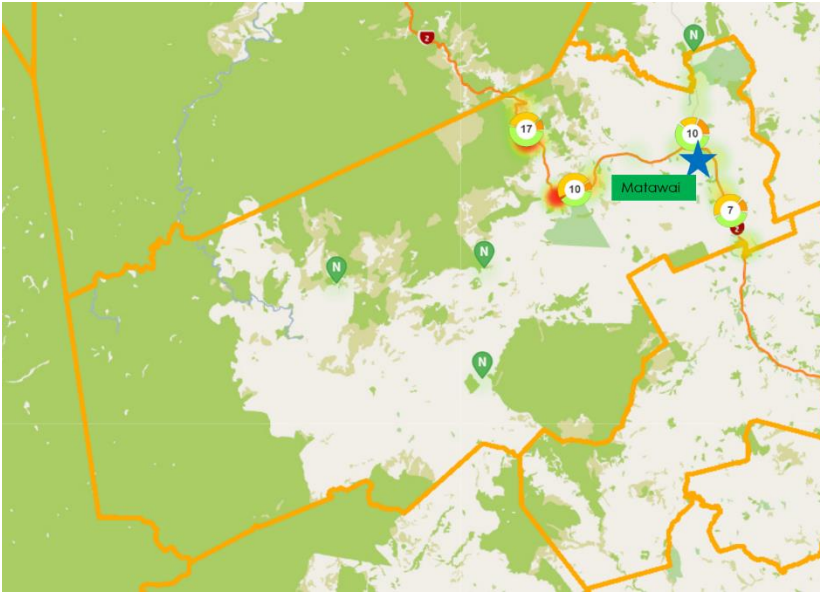


Figure S-16: Crashes recorded in Matakai region, 2010-2019

In Matakai township and the immediate area, 4 crashes were recorded between 2010 and 2019, resulting in 1 serious injury (Figure S-17). The serious injury crash occurred on a curve on SH2 to the west of town.

Travel speed was a factor in 1 a non-injury crash in the 100km/h speed limit area. No reported crashes involved pedestrians or cyclists.

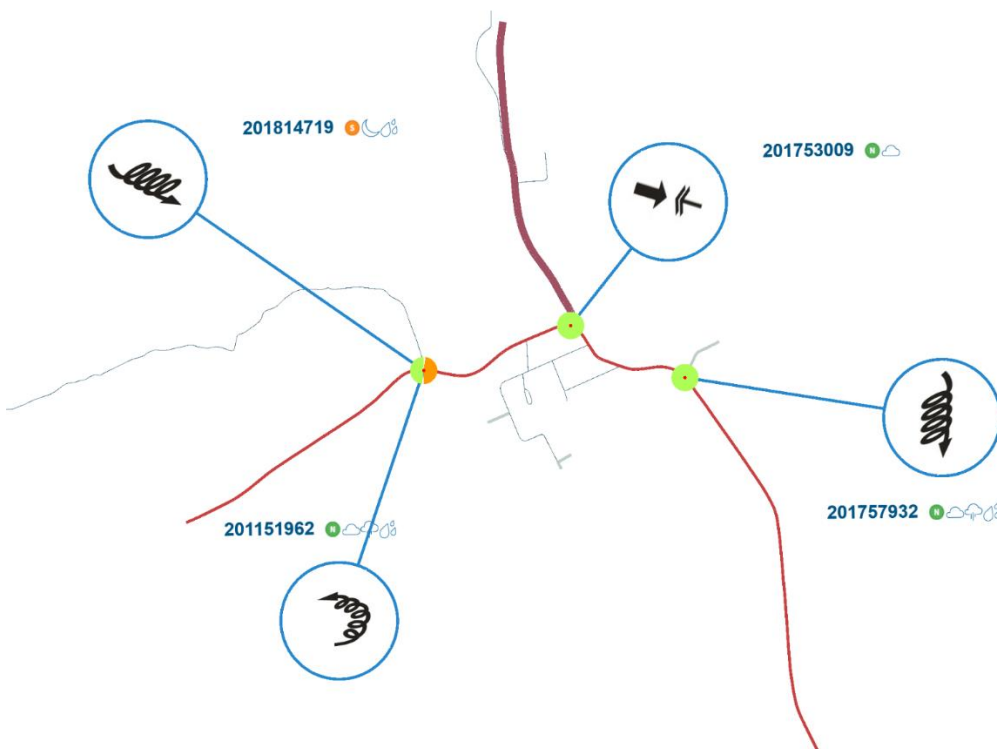


Figure S-17: Crash diagram in Matakai township and its vicinity, 2010-2019

Table S-7: Detailed crashes in Matawai township and its vicinity, 2010-2019

Location	Code	Date	Speed limit	Description	Inappropriate speed factor
In Matawai township	201753009	27/10/2017 Friday 12:05	50km/h	A northbound vehicle travelling on SH2 hit a truck which was reversing along the road	No
SH2 West	201814719	28/5/2018 Monday 6:30	100 km/h	A truck was parked too close to the bank and slipped down the bank, cause serious injury to the driver	No
	201151962	25/4/2011 Monday 14:00	100 km/h	An eastbound vehicle travelling on SH2 failed to negotiate a curve and lost control	Yes
SH2 East	201757932	29/12/2017 Friday 15:30	100 km/h	A southbound vehicle travelling on SH2 and lost control on a straight section of road	No

The only non-injury crash that occurred within the urban area of 50km/h of the town, involved a vehicle reversing on the one-way road section within a construction work area.

## Section 5: Mega Maps for the Gisborne Region

The Posted Speed Limits layer shows the region's roads are predominantly sign posted at 100km/h for the rural network with 50km/h in the urban city and some townships with a small number of 70km/h permanent speed restrictions. Refer to Figure S-18.

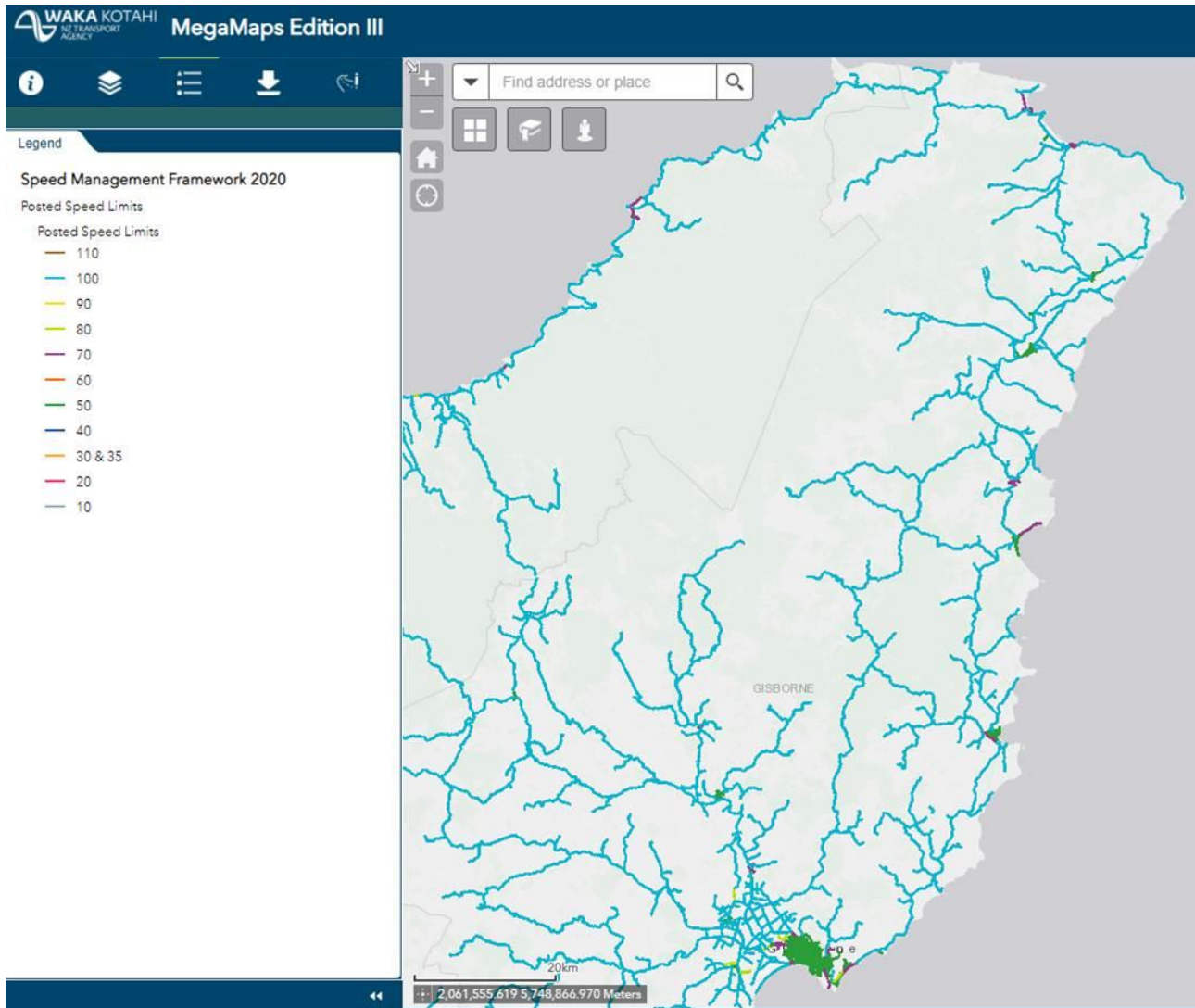


Figure S-18: Gisborne Region Existing Posted Speed Limits



The mean operating speeds layer is based on TomTom data (Sat Nav) which shows that the average speeds driven over the region's roads tend to be significantly lower than the posted speed limit, especially on the winding and unsealed rural network.

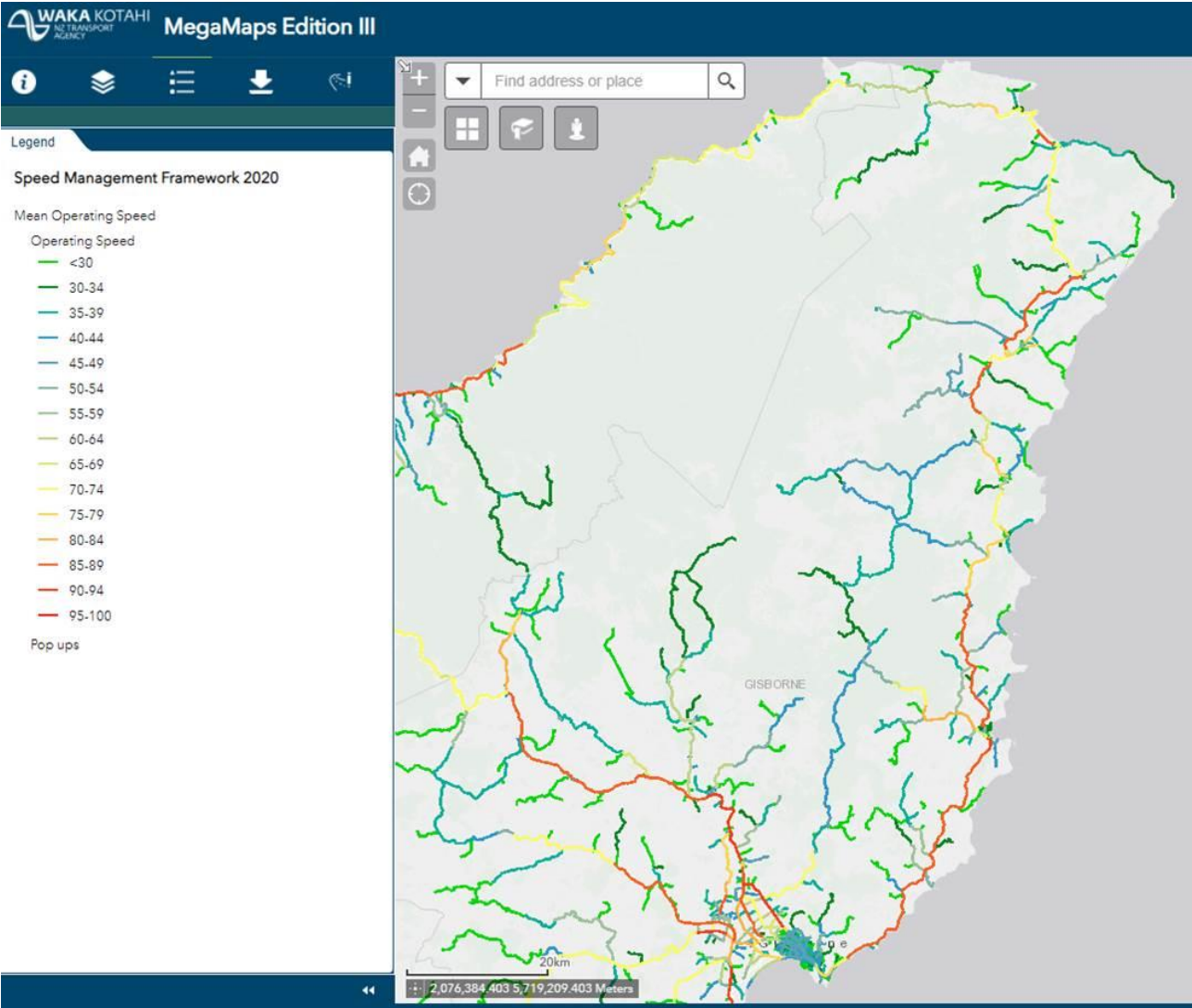


Figure S-19: Gisborne Region Mean Operating Speeds

The Safe and Appropriate Speed (SAAS) layer is based on a speed being appropriate for the road function, design, safety and use. As such, the ONRC, land use, road safety metric and IRR factors (along with other key carriageway features in certain situations) are critical inputs in the determination of the SAAS. This layer also overlays the urban and rural school variable speed zones.

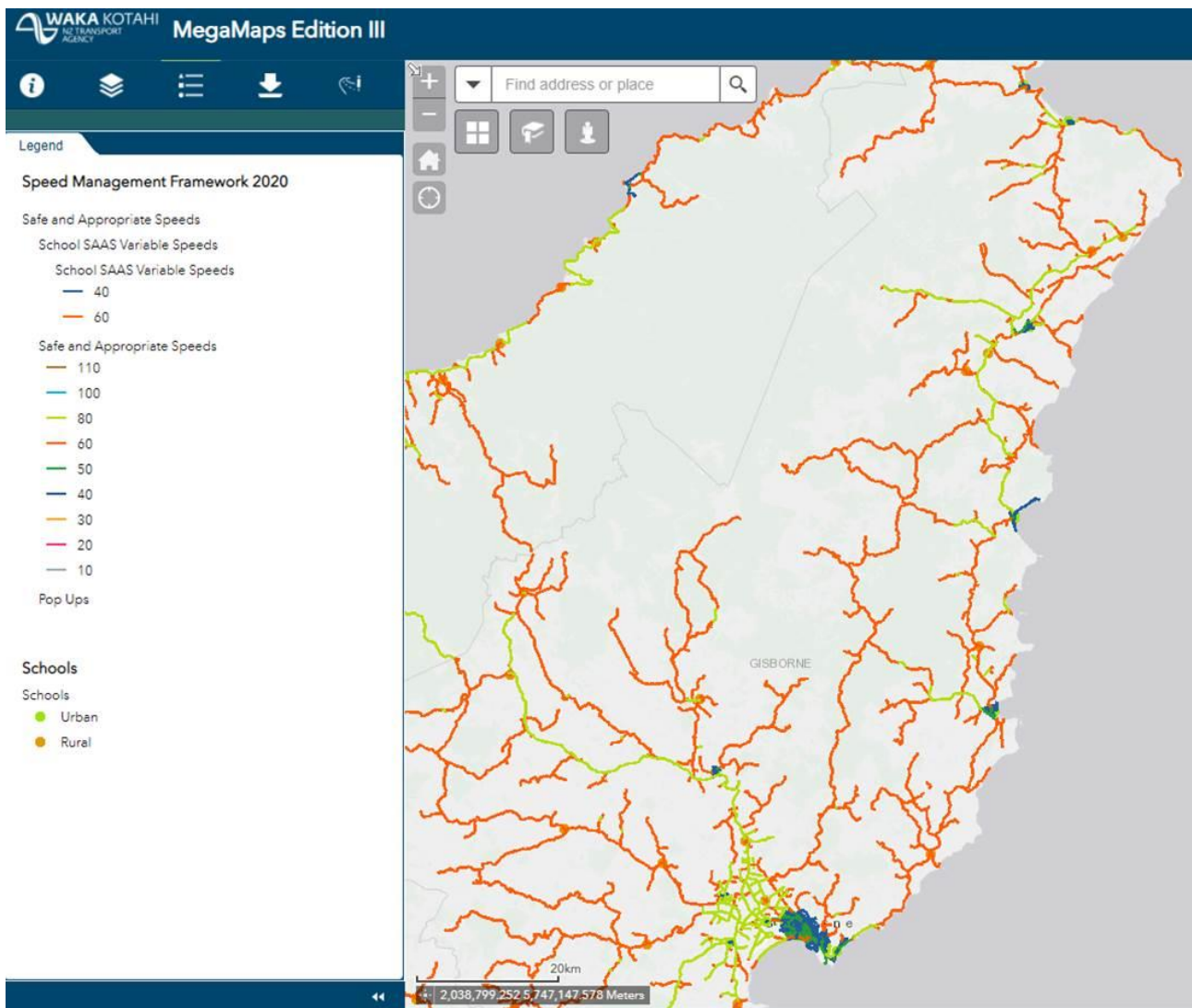


Figure S-20: Gisborne Region Safe and Appropriate Speeds

The Road Safety Metric layer shows the Collective or Personal risk. This calculates the likelihood of an injury crash resulting in a death or serious injuries (DSi) based on historic crash data analysis of environment factors verses users. Collective risk measures the expected number of DSi's per km per 5 years. Personal Risk divides Collective risk by the traffic volume.

Refer to Figure S-21 and Figure S-22.

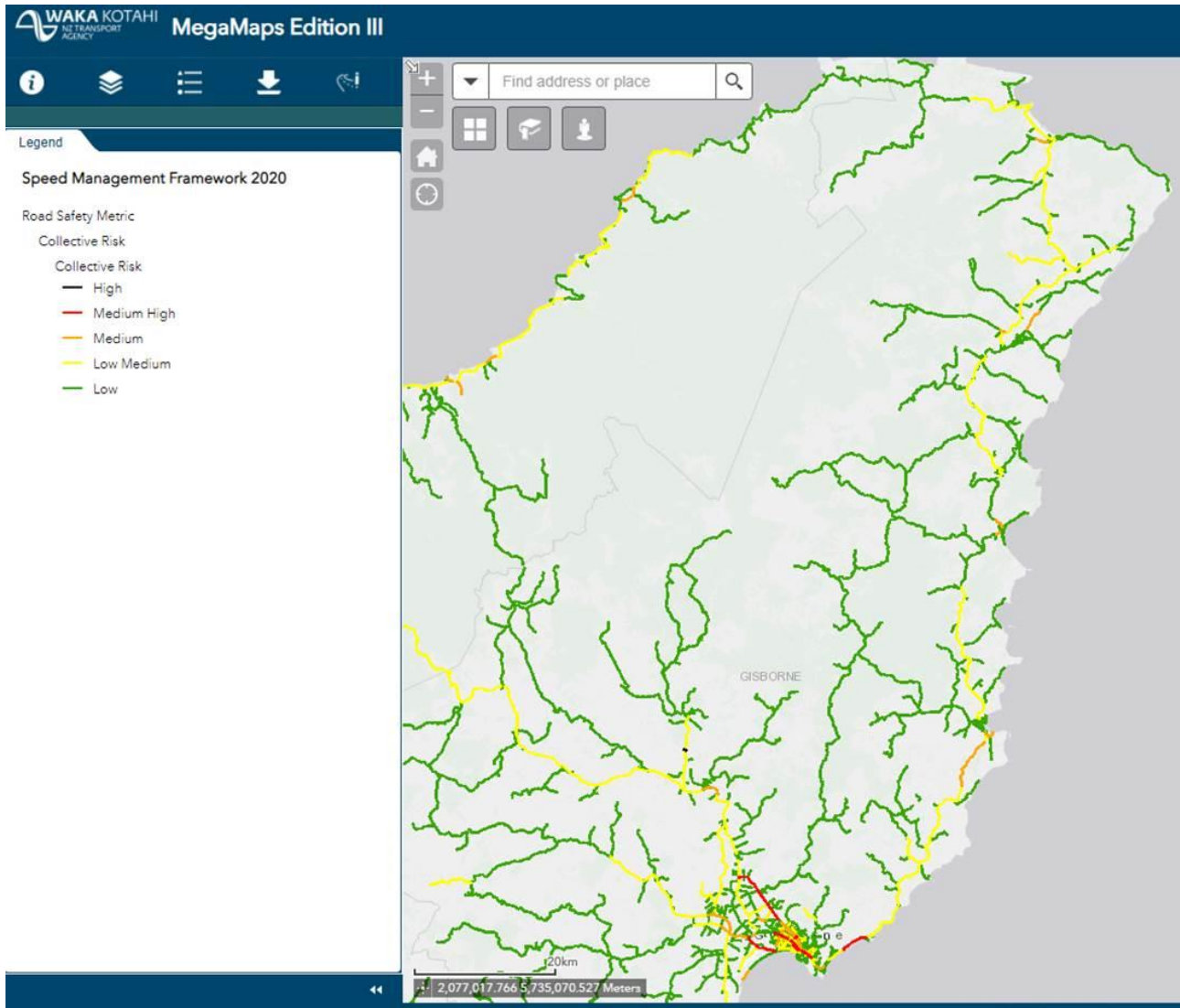


Figure S-21: Gisborne Region Collective Risk Map

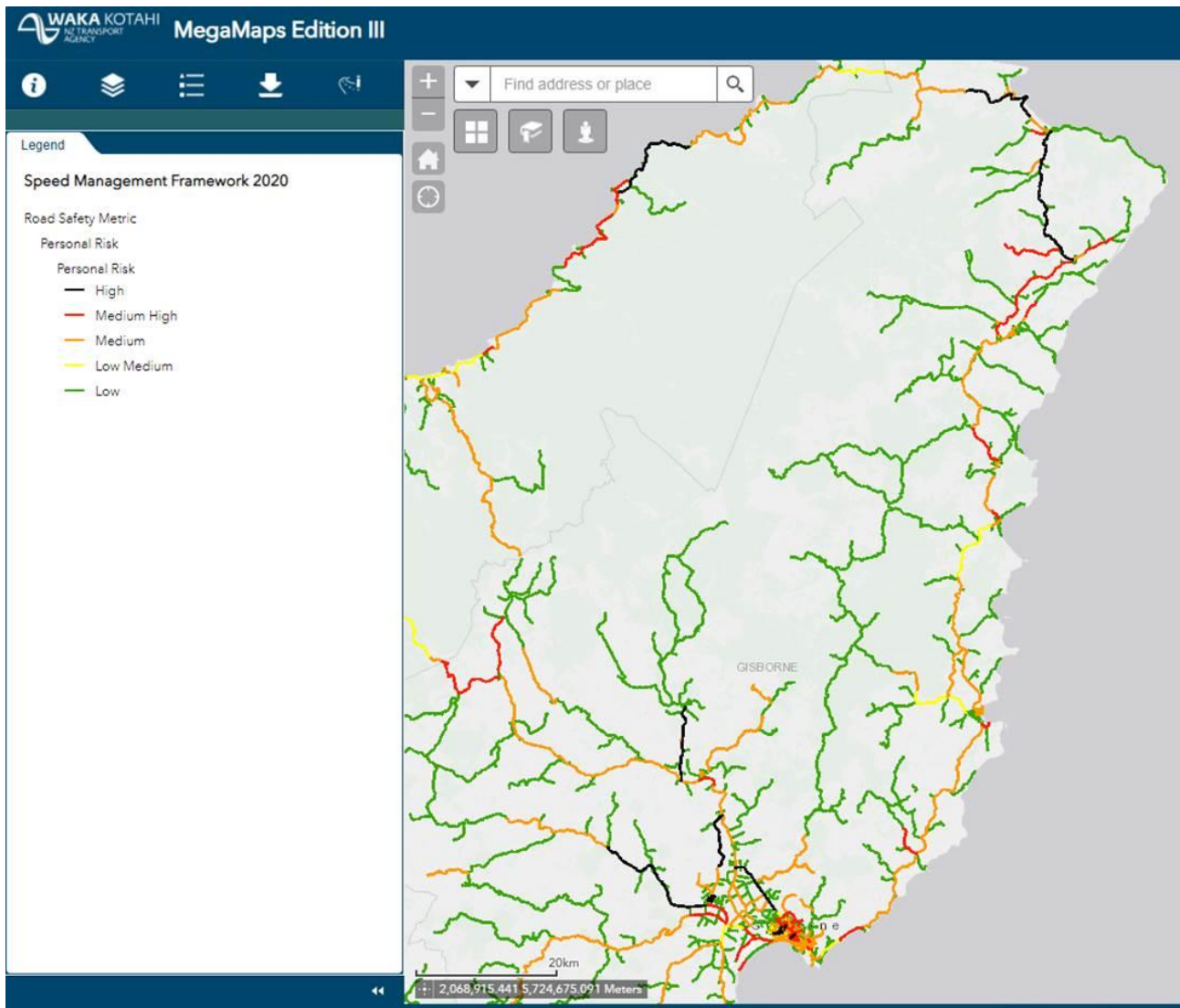


Figure S-22: Gisborne Region Personal Risk Map



The Infrastructure Risk Rating (IRR) layer is shown in Figure S-23. This risk is calculated based on value types listed in the example box below. (Note: AADT = Average Annual Daily Traffic).

As shown in the map, there are a number of rural roads that have a high IRR.

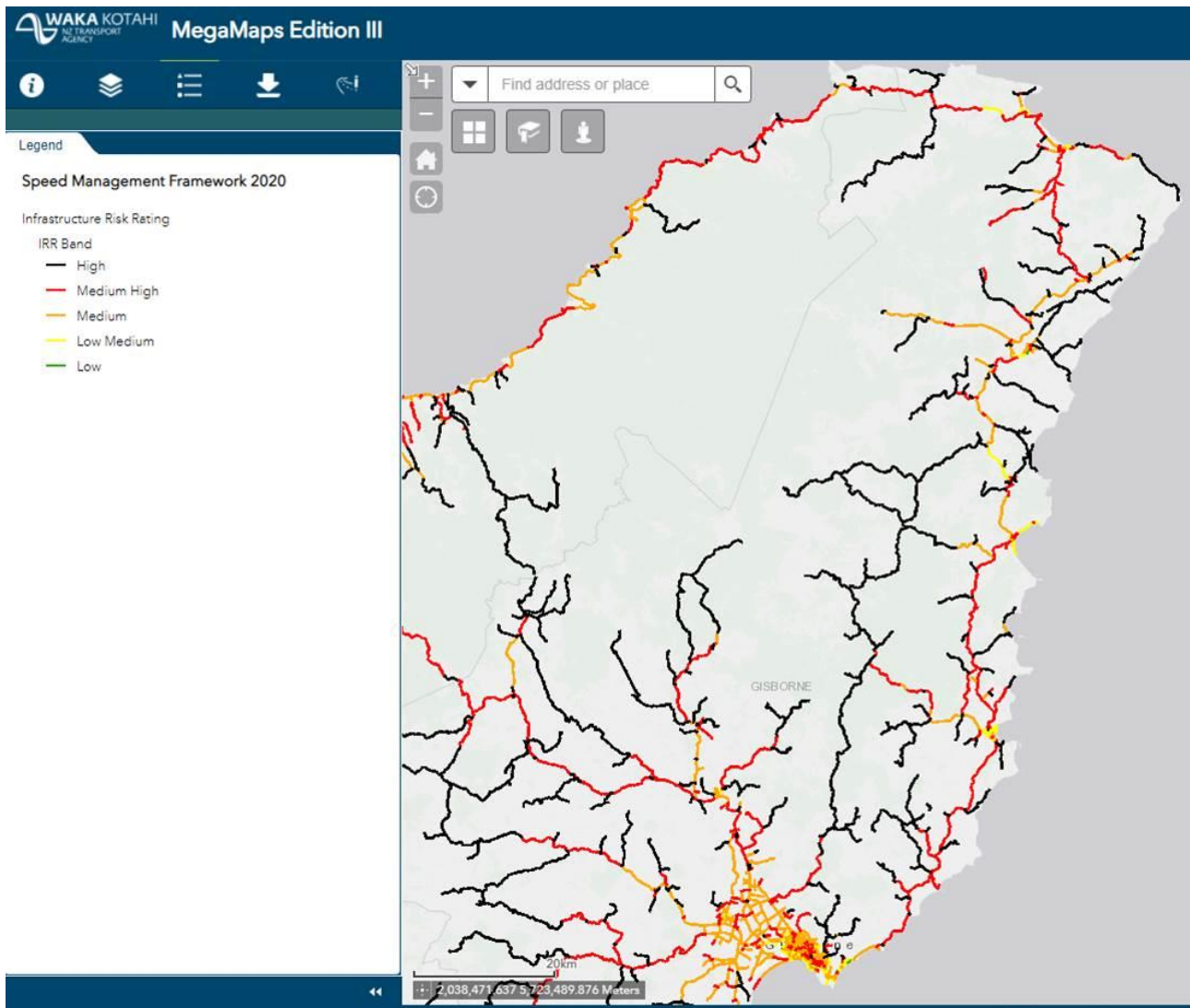


Figure S-23: Gisborne Region Infrastructure Risk Rating Map

The Crashes layer shows fatal, serious and minor crash data from the last 5-year period (2015-2019). Figure S-24 shows the injury crash data for the Gisborne Urban area.

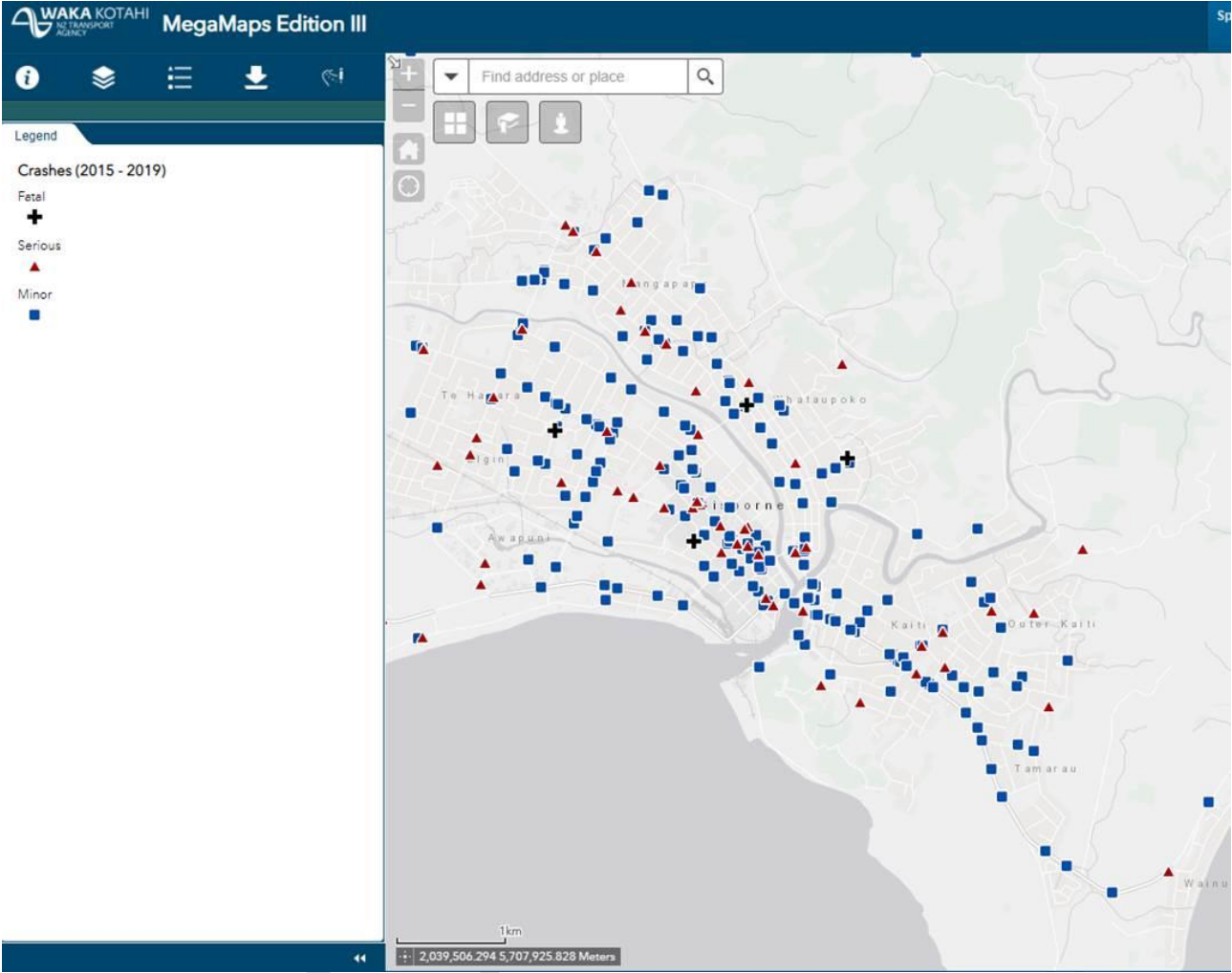


Figure S-24: Gisborne Urban Area Injury Crash Map

The top 10% DSI Saving network sections have been analysed against the new NLTP 'Network Safety' programme to show the immediate opportunities for the development of Regional Speed Management Plans. These are mapped in Figure S-25.

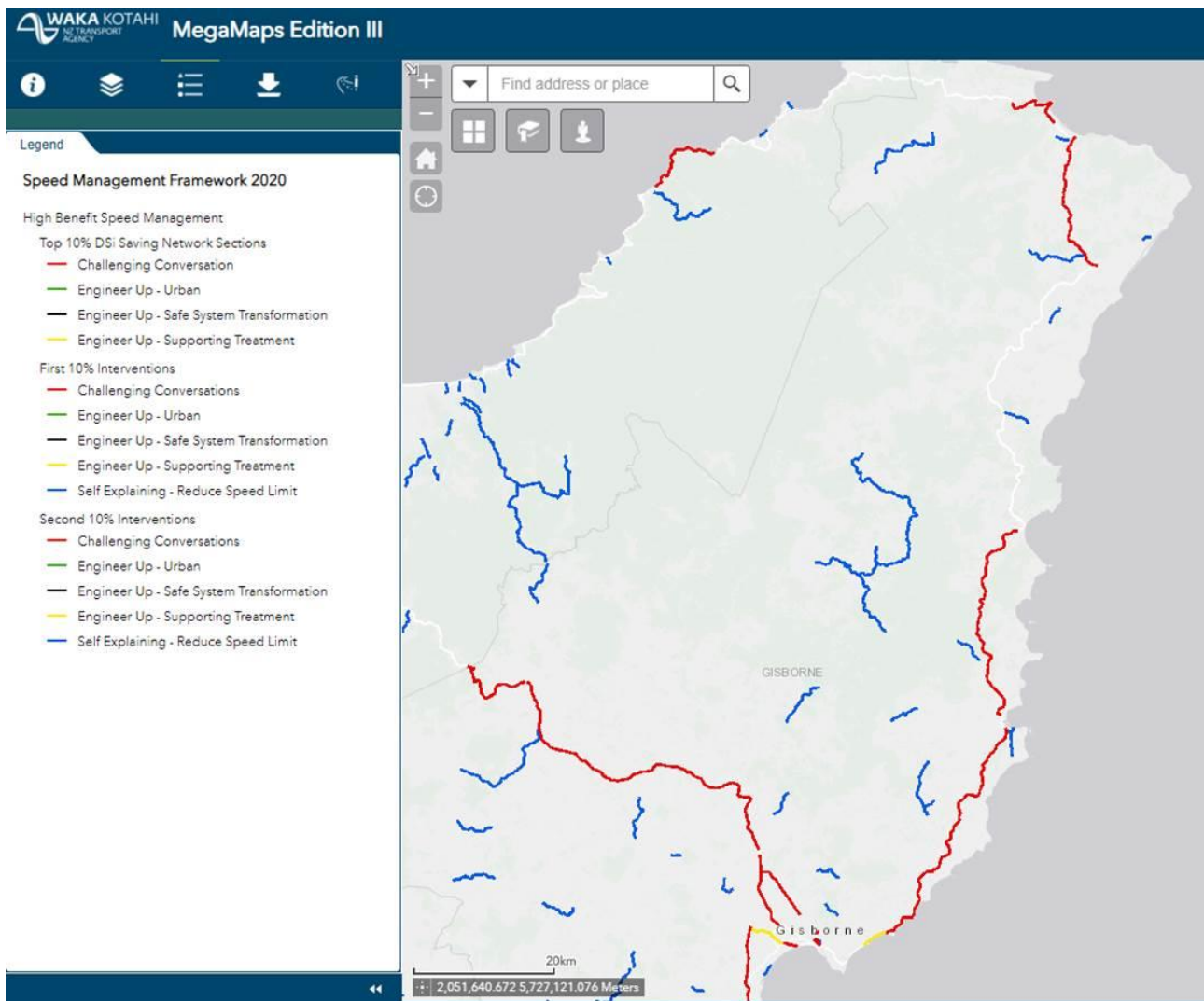
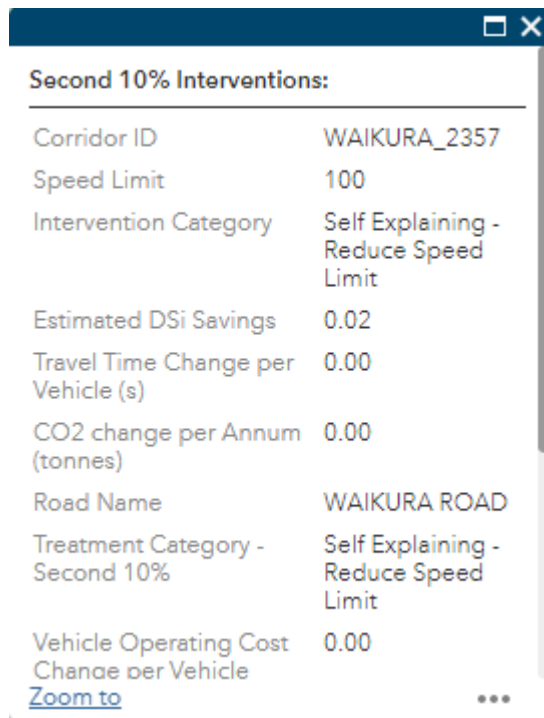


Figure S-25: Gisborne Region Top 10% DSI Saving Network Sections Map

For example, to reduce the speed on Waikura Road to the SAAS (60), the DSI savings are calculated as 2% as follows.



<b>Second 10% Interventions:</b>	
Corridor ID	WAIKURA_2357
Speed Limit	100
Intervention Category	Self Explaining - Reduce Speed Limit
Estimated DSI Savings	0.02
Travel Time Change per Vehicle (s)	0.00
CO2 change per Annum (tonnes)	0.00
Road Name	WAIKURA ROAD
Treatment Category - Second 10%	Self Explaining - Reduce Speed Limit
Vehicle Operating Cost Change per Vehicle	0.00
<a href="#">Zoom to</a>	...

Figure S-26: Waikura Road DSI Savings Calculation

For the few local roads for the Gisborne region that fall into the national top 10%, mostly these supports being self-explaining reduced speed limits. The self-explaining classification generally has an operating speed that is comparable to or lower than the SAAS, both of which are lower than the existing speed limit.



Mega Maps also can show locations of the schools in the region by urban and rural areas plus provide details of specific roads. Refer to Figure S-27 and Figure S-28.

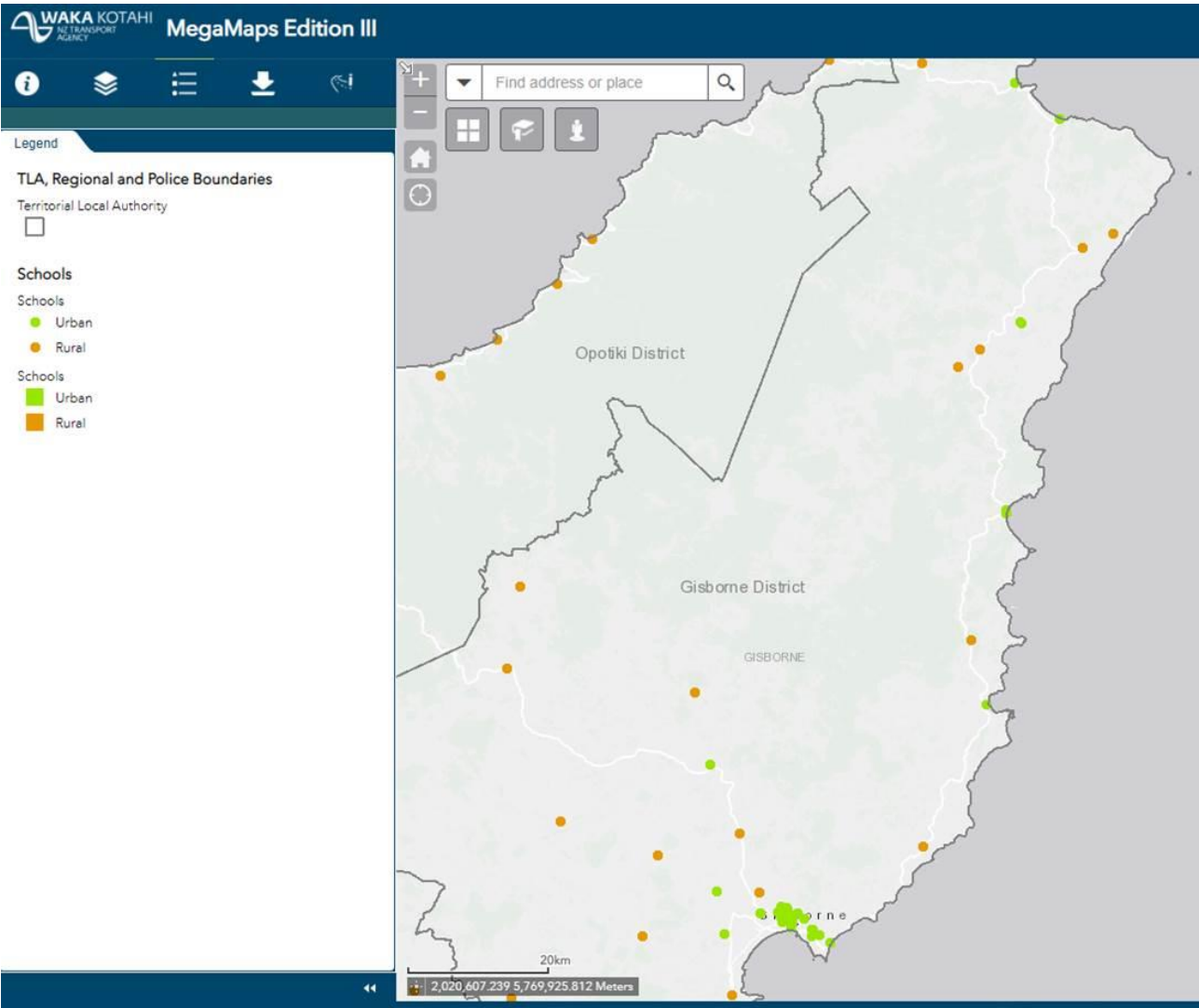


Figure S-27: Gisborne Region Urban and Rural School Locations Map

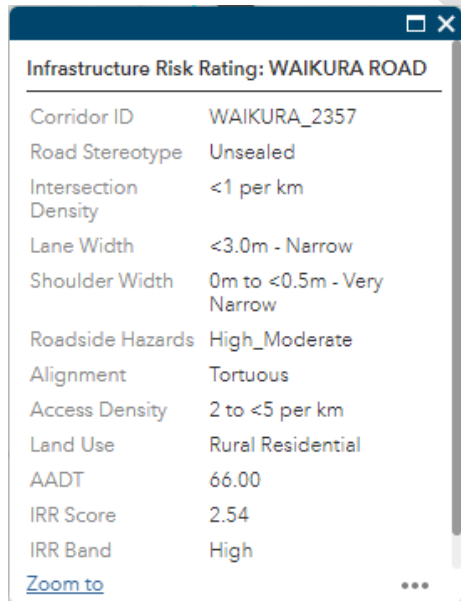


Figure S-28: Waikura Road Summary of Information

## Section 6: Reported Fatal and Serious Injury crashes involving Inappropriate Speeds in the Gisborne District (2010-2019)

Crash ID	Crash road	DIST	DIR	Side road	ID	Date	Day	Time	Description of events	Crash factors	Road	Natural light	Weather	Junction	Control	FAT	SEV	MIN
201966286	002-0361	2236	E	TE WERA ROAD	201966286	8/3/2019	Sat	17:00	Ute1 NDB on Matawai SH2 lost control turning left; went off road to right, Ute1 hit fence	UTE1, alcohol suspected, speed entering corner/curve, swung wide on bend	Dry	Dark	Fine	Nil (Default)	Unknown	0	1	1
201953406	035-0225	525	S		201953406	4/26/2019	Fri	14:15	Car/Wagon1 SDB on Waiapu road missed inters or end of road, Car/Wagon1 hit embankment (driven over), fence, tree, other	CAR/WAGON1, alcohol test above limit or test refused, lost control when turning, speed entering corner/curve	Dry	Bright sun	Fine	Nil (Default)	Unknown	1	1	0
201900011	035-0238	650	W	KAIWAHA ROAD	201900011	1/11/2019	Fri	6:15	Truck1 EDB on SH 3 lost control turning right, Truck1 hit embankment (driven over), fence, armco (w-section steel),	TRUCK1, lost control when turning, speed entering corner/curve	Dry	Dark	Fine	Nil (Default)	Unknown	1	0	0
201952396	035-0250	263	N		201952396	2/14/2019	Thu	5:20	Truck1 SDB on SH 35 lost control turning right; went off road to left, Truck1 hit fence	TRUCK1, alcohol test below limit, drugs suspected, lost control when turning, speed entering corner/curve	Dry	Dark	Fine	Nil (Default)	Unknown	0	1	0

Crash ID	Crash road	DIST	DIR	Side road	ID	Date	Day	Time	Description of events	Crash factors	Road	Natural light	Weather	Junction	Control	FAT	SEV	MIN
201800225	035-0274	850	S		201800225	8/29/2018	Wed	12:50	Ute1 NDB on SH 35 lost control turning left, Ute1 hit fence, traffic sign, tree,	UTE1, alcohol test below limit, speed entering corner/curve, swung wide on bend, worn tread on tyre	Wet	Overcast	Light rain	Nil (Default)	Unknown	1	0	1
201961643	035-0274	570	S		201961643	8/2/2019	Fri	11:45	Car/Wagon1 NDB on SH 35, TOLAGA BAY, GISBORNE cutting corner hit Truck2 head on	CAR/WAGON1, alcohol suspected, cutting corner on bend, speed entering corner/curve TRUCK2, alcohol test above limit or test refused	Dry	Bright sun	Fine	Nil (Default)	Unknown	0	1	0
201953018	035-0308	2504	S		201953018	3/26/2019	Tue	12:45	Car/Wagon1 NDB on State Highway 35 hit rear end of Truck2 stop/slow for signals	CAR/WAGON1, failed to notice control, speed entering corner/curve TRUCK2, alcohol test below limit	Dry	Bright sun	Fine	Nil (Default)	Unknown	0	1	0
201952937	035-0321	44	S	ONEROA ROAD	201952937	3/30/2019	Sat	19:00	Car/Wagon1 NDB on WAINUI, WAINUI (GISBORNE) lost control turning left; went off road to left	CAR/WAGON1, alcohol test above limit or test refused, drugs suspected, speed entering corner/curve	Dry	Bright sun	Fine	T Junction	Give way	0	2	0
201311949	ABERDEEN ROAD	80	W	STANLEY ROAD	201311949	6/13/2013	Thu	23:35	Car/Wagon1 WDB on ABERDEEN ROAD lost control; went off road to left, Car/Wagon1	CAR/WAGON1, alcohol suspected, speed on straight, started in gear/stalled,	Wet	Dark	Heavy rain	Nil (Default)	Nil	0	1	0

Crash ID	Crash road	DIST	DIR	Side road	ID	Date	Day	Time	Description of events	Crash factors	Road	Natural light	Weather	Junction	Control	FAT	SEV	MIN
									hit non-specific building, non-specific kerb	ENV: heavy rain								
201953133	BACK ORMOND ROAD	1062	N	HARPER ROAD	201953133	4/17/2019	Wed	21:45	Car/Wagon1 SDB on Back Ormond road lost control turning right; went off road to left, Car/Wagon1 hit fence	CAR/WAGON1 , alcohol test above limit or test refused, inappropriate speed for road conditions, lost control when turning, too far left, ENV: loose material on seal	Dry	Dark	Fine	Nil (Default)	Unknown	0	1	1
201950282	BARBERS HILL ROAD	190	E	Hill road	201950282	2/18/2019	Mon	19:05	Ute1 SDB on Ballance street lost control turning left; went off road to left	UTE1, alcohol test above limit or test refused, inappropriate speed for road conditions, lost control - road conditions, ENV: other surface conditions	Dry	Bright sun	Fine	Nil (Default)	Unknown	0	1	0
201418274	BEACH ROAD		I	SH 35	201418274	12/24/2014	Wed	2:30	Motorcycle1 SDB on BEACH ROAD lost control turning right, Motorcycle1 hit non-specific traffic island	MOTORCYCLE1 , alcohol test above limit or test refused, lost control when turning, speed entering corner/curve	Dry	Dark	Fine	T Junction	Stop	0	1	0
201711188	CHILDERS ROAD	30	S	SH 35	201711188	1/21/2017	Sat	2:03	Car/Wagon1 SDB on Childers road lost control; went off road to right, Car/Wagon1 hit non-	CAR/WAGON1 , alcohol test above limit or test refused, speed on straight, too far right	Dry	Dark	Fine	Roundabout	Give way	0	1	0



Crash ID	Crash road	DIST	DIR	Side road	ID	Date	Day	Time	Description of events	Crash factors	Road	Natural light	Weather	Junction	Control	FAT	SEV	MIN
									specific building									
201013319	CHILDERS ROAD		I	STANLEY ROAD	201013319	11/17/2010	Wed	1:40	Car/Wagon1 WDB on CHILDERS ROAD lost control; went off road to left, Car/Wagon1 hit non-specific fence, non-specific guard rail, non-specific tree,	CAR/WAGON1 , alcohol test below limit, evading enforcement, speed on straight	Dry	Dark	Fine	Roundabout	Give way	0	1	0
201112246	DE LAUTOUR ROAD	10	S	HUXLEY ROAD	201112246	7/24/2011	Sun	2:35	Car/Wagon1 NDB on DE LAUTOUR ROAD lost control; went off road to right, Car/Wagon1 hit non-specific fence, non-specific street furniture, non-specific tree	CAR/WAGON1 , alcohol suspected, new driver/under instruction, speed on straight	Wet	Dark	Light rain	T Junction	Give way	0	2	2
201617986	DERBY ST	30	S	PALMERSTON ROAD	201617986	11/12/2016	Sat	2:46	Car/Wagon1 SDB on Derby Street hit Pedestrian2 (Age 29), Car/Wagon1 hit non-specific parked	CAR/WAGON1 , alcohol test above limit or test refused, emotionally upset/road rage, other intentional actions, speed on straight, too far left	Dry	Dark	Fine	Nil (Default)	Unknown	0	1	1
201013237	ENDCLIFFE ROAD		I	SH 35	201013237	10/24/2010	Sun	2:18	Car/Wagon1 WDB on ENDCLIFFE ROAD lost	CAR/WAGON1 , lost control under acceleration,	Dry	Dark	Fine	T Junction	Give way	0	1	0

Crash ID	Crash road	DIST	DIR	Side road	ID	Date	Day	Time	Description of events	Crash factors	Road	Natural light	Weather	Junction	Control	FAT	SEV	MIN
									control turning left, Car/Wagon1 hit non-specific street furniture, non-specific kerb	speed entering corner/curve, suddenly turned								
201618732	GADDUMS HILL ROAD	820	E	DE LAUTOUR ROAD	201618732	12/6/2016	Tue	5:10	Car/Wagon1 EDB on Gaddums Hill Road, Gisborne lost control turning right, Car/Wagon1 hit non-specific fence	CAR/WAGON1, alcohol test above limit or test refused, speed entering corner/curve	Dry	Twilight	Fine	Nil (Default)	Unknown	0	1	1
201719500	GLADSTONE ROAD	60	E	CAMPION ROAD	201719500	11/13/2017	Mon	18:40	Car/Wagon1 EDB on Gladstone Road hit rear end of Car/Wagon2 stopped/moving slowly, Car/Wagon1 hit non-specific traffic island, non-specific kerb	CAR/WAGON1, new driver/under instruction, other intentional or criminal, speed on straight	Dry	Overcast	Fine	Nil (Default)	Unknown	0	2	0
201973832	GLADSTONE ROAD	60	W	STANLEY ROAD	201973832	11/16/2019	Sat	0:57	Car/Wagon1 WDB on Gladstone Road lost control but did not leave the road, Car/Wagon1 hit tree	CAR/WAGON1, alcohol suspected, other inexperience, speed on straight	Dry	Dark	Fine	Roundabout	Give way	0	1	2
201613087	KNIGHTS ROAD	70	E	LAKE ROAD	201613087	6/3/2016	Fri	8:00	Van1 WDB on KNIGHTS ROAD lost control; went off road to right, Van1 hit	VAN1, other lost control, speed on straight, too far right	Dry	Overcast	Null	Nil (Default)	Unknown	0	1	0

Crash ID	Crash road	DIST	DIR	Side road	ID	Date	Day	Time	Description of events	Crash factors	Road	Natural light	Weather	Junction	Control	FAT	SEV	MIN
									non-specific ditch									
201813520	LAVENHAM ROAD	50	N	ATKINS ST	201813520	4/26/2018	Thu	17:06	Motorcycle1 EDB on LAVENHAM ROAD lost control turning, Motorcycle1 hit non-specific pole	MOTORCYCLE1 , new driver/under instruction, other inappropriate speed	Dry	Twilight	Null	Nil (Default)	Unknown	0	1	0
201010088	LAVENHAM ROAD	1450	N	RENNER ROAD	201010088	11/14/2010	Sun	20:50	Motorcycle1 NDB on LAVENHAM ROAD hit Pedestrian2 (Age 49) walking facing traffic	MOTORCYCLE1 , alcohol test above limit or test refused, cutting corner on bend, other inappropriate speed, PEDESTRIAN2, alcohol impaired non-driver (pedestrian/cyclist/pa, failed to see another party wearing dark clothing	Dry	Dark	Fine	Nil (Default)	Nil	2	0	0
201614602	LAVENHAM ROAD	1110	E	TANGHANGA ROAD	201614602	3/7/2016	Mon		Car/Wagon1 NDB on LAVENHAM ROAD lost control turning left	CAR/WAGON1 , alcohol suspected, speed entering corner/curve	Dry	Dark	Fine	Nil (Default)	Unknown	0	2	0
201111357	LOCKWOOD ROAD		I	ANAUARA ROAD	201111357	3/5/2011	Sat	19:20	Motorcycle1 SDB on LOCKWOOD ROAD lost control on straight and hit Car/Wagon2 head on	CAR/WAGON2 , alcohol test above limit or test refused MOTORCYCLE1 , alcohol suspected, lost control - road conditions, other	Dry	Overcast	Fine	Crossroads	Nil	0	1	1

Crash ID	Crash road	DIST	DIR	Side road	ID	Date	Day	Time	Description of events	Crash factors	Road	Natural light	Weather	Junction	Control	FAT	SEV	MIN
										inappropriate speed								
201113363	LYTTON ROAD	190	N	PARKINSON ST	201113363	11/6/2011	Sun	9:19	Car/Wagon1 NDB on LYTTON ROAD lost control; went off road to right, Car/Wagon1 hit non-specific fence, non-specific tree	CAR/WAGON1 , other lost control, speed on straight	Dry	Bright sun	Fine	Nil (Default)	Nil	0	1	0
201413354	LYTTON ROAD		I	STOUT ST	201413354	5/31/2014	Sat	11:10	Car/Wagon1 SDB on LYTTON ROAD lost control turning right, Car/Wagon1 hit non-specific kerb	CAR/WAGON1 , lost control when turning, speed entering corner/curve, ENV: slippery road due to rain	Wet	Overcast	Light rain	Roundabout	Give way	0	1	0
201112102	MAIN ROAD		I	SH 2	201112102	7/15/2011	Fri	23:08	Car/Wagon1 WDB on MAIN ROAD lost control turning left, Car/Wagon1 hit generic debris	CAR/WAGON1 , alcohol test above limit or test refused, new driver/under instruction, other inappropriate speed	Wet	Dark	Fine	T Junction	Give way	0	1	0
201416693	MATA ROAD	3700	E	HUIARUA STATION ROAD	201416693	11/5/2014	Wed	6:00	SUV1 SDB on MATA ROAD lost control turning left, SUV1 hit non-specific cliff, non-specific fence	SUV1, lost control - road conditions, speed entering corner/curve, ENV: fog or mist	Dry	Overcast	Mist or Fog	Nil (Default)	Unknown	0	1	4
201416469	MONK HOUSE ST		I	SH 35	201416469	9/30/2014	Tue	20:20	Car/Wagon1 SDB on MONKHOUSE ST lost control	CAR/WAGON1 , alcohol test above limit or test refused,	Wet	Dark	Light rain	Crossroads	Give way	0	1	0



Crash ID	Crash road	DIST	DIR	Side road	ID	Date	Day	Time	Description of events	Crash factors	Road	Natural light	Weather	Junction	Control	FAT	SEV	MIN
									turning right, Car/Wagon1 hit non-specific building	lost control when turning, speed entering corner/curve, ENV: slippery road due to rain, strong wind								
201210041	NELSON ROAD	250	E	CAME RON ROAD	201210041	7/14/2012	Sat	21:48	Car/Wagon1 WDB on NELSON ROAD lost control turning right, Car/Wagon1 hit non-specific pole, non-specific tree	CAR/WAGON1, alcohol test above limit or test refused, evading enforcement, speed entering corner/curve	Dry	Dark	Fine	Nil (Default)	Unknown	3	1	0
201800075	ORMOND ROAD		I	WILPERE ST	201800075	3/11/2018	Sun	20:35	Van1 NDB on Ormond Road lost control turning right, Van1 hit non-specific fence, trailer	VAN1, alcohol test above limit or test refused, lost control when turning, speed entering corner/curve	Dry	Dark	Fine	Roundabout	Give way	1	0	1
201511889	PARKINSON ST	120	N	SOLANDER ST	201511889	4/10/2015	Fri	21:10	Car/Wagon1 NDB on PARKINSON ST lost control turning left, Car/Wagon1 hit non-specific building, non-specific other	CAR/WAGON1, alcohol test above limit or test refused, lost control when turning, speed entering corner/curve, ENV: slippery road due to rain	Wet	Dark	Light rain	Nil (Default)	Unknown	0	1	1
201013712	PAROA ROAD	400	S	WAIAPU ROAD	201013712	10/5/2010	Tue	22:58	Van1 SDB on PAROA ROAD lost control turning right, Van1 hit non-specific fence, non-specific tree	VAN1, alcohol suspected, evading enforcement, speed entering corner/curve	Dry	Dark	Fine	Nil (Default)	Nil	0	1	1

Crash ID	Crash road	DIST	DIR	Side road	ID	Date	Day	Time	Description of events	Crash factors	Road	Natural light	Weather	Junction	Control	FAT	SEV	MIN
201716409	RANGITUKIA ROAD	210	S		201716409	7/30/2017	Sun	1:00	Truck1 NDB on Rangitukia lost control turning left, Truck1 hit non-specific fence, non-specific pole	TRUCK1, alcohol suspected, lost control when turning, other fatigue, speed entering corner/curve	Dry	Dark	Mist or Fog	Nil (Default)	Unknown	0	1	1
201600291	SH 2	580	S		201600291	12/24/2016	Sat	21:30	Bus1 NDB on State Highway 2 lost control turning left, Bus1 hit non-specific embankment, non-specific guard rail, non-specific other	BUS1, other brakes, other inexperience, speed entering corner/curve, swung wide on bend	Dry	Dark	Fine	Nil (Default)	Unknown	3	14	26
201721038	SH 2	130	W		201721038	12/31/2017	Sun	20:00	Car/Wagon1 WDB on SH 2 swinging wide hit Car/Wagon2 head on	CAR/WAGON2, alcohol test below limit CAR/WAGON1, speed entering corner/curve, swung wide on bend	Dry	Overcast	Fine	Nil (Default)	Unknown	0	1	0
201950283	SH 2	597	S	FOXLEY ROAD	201950283	3/4/2019	Mon	9:16	SUV1 NDB on SH 2, MURIWAI, GISBORNE lost control turning left; went off road to right, SUV1 hit fence	SUV1, lost control when turning, speed at temporary speed limit	Dry	Bright sun	Fine	Nil (Default)	Unknown	0	1	0
201611736	SH 2	750	E	MAIN ROAD	201611736	3/25/2016	Fri	10:45	Car/Wagon1 NDB on SH 2 swinging wide hit Car/Wagon2 head on	CAR/WAGON1, speed entering corner/curve, swung wide on bend	Wet	Overcast	Light rain	Nil (Default)	Unknown	0	7	0

Crash ID	Crash road	DIST	DIR	Side road	ID	Date	Day	Time	Description of events	Crash factors	Road	Natural light	Weather	Junction	Control	FAT	SEV	MIN
201614244	SH 2		I	MAIN ROAD	201614244	6/21/2016	Tue	20:00	Van1 WDB on SH 2 lost control turning right, Van1 hit non-specific ditch	VAN1, alcohol suspected, lost control when turning, speed entering corner/curve	Dry	Dark	Fine	Y Junction	Give way	0	1	0
201512527	SH 2	5000	W	TE WERA ROAD	201512527	4/2/2015	Thu	20:30	Truck1 WDB on SH 2 lost control on curve and hit Car/Wagon2 head on	TRUCK1, lost control when turning, speed entering corner/curve	Wet	Dark	Light rain	Nil (Default)	Nil	0	2	1
201311933	SH 2 WHARE RATA ROAD	320	W	PARITU ROAD	201311933	4/4/2013	Thu	12:50	Car/Wagon1 EDB on SH 2 WHARERATA ROAD lost control turning right, Car/Wagon1 hit non-specific embankment	CAR/WAGON1, lost control when turning, new driver/under instruction, speed entering corner/curve, ENV: road slippery (oil/diesel/fuel)	Dry	Bright sun	Fine	Nil (Default)	Nil	0	1	0
201718552	SH 35	350	W		201718552	9/28/2017	Thu	14:00	Motorcycle1 NDB on Whangara Road lost control turning right, Motorcycle1 hit non-specific fence, non-specific traffic sign	MOTORCYCLE1, alcohol test above limit or test refused, lost control when turning, speed entering corner/curve	Dry	Overcast	Light rain	Nil (Default)	Unknown	0	1	0
201911316	SH 35	320	N		201911316	1/19/2019	Sat	6:35	Motorcycle1 NDB on Sh35/ Whangara Road, lost control turning right, Motorcycle1 hit non-	MOTORCYCLE1, alcohol suspected, speed entering corner/curve, too far left, ENV: surface	Dry	Twilight	Fine	Nil (Default)	Unknown	0	1	0

Crash ID	Crash road	DIST	DIR	Side road	ID	Date	Day	Time	Description of events	Crash factors	Road	Natural light	Weather	Junction	Control	FAT	SEV	MIN
									specific guard rail	bleeding/defective								
201113274	SH 35		I	ANAU ROAD	201113274	12/30/2011	Fri	13:00	Car/Wagon1 SDB on SH 35 lost control turning right, Car/Wagon1 hit non-specific tree	CAR/WAGON1, lost control when turning, new driver/under instruction, speed entering corner/curve, ENV: other slippery road	Wet	Bright sun	Light rain	T Junction	Stop	0	1	3
201617020	SH 35	840	S	CHRISTOPHER ROAD	201617020	6/19/2016	Sun	18:00	Car/Wagon1 SDB on SH 35 lost control turning left	CAR/WAGON1, lost control when turning, speed entering corner/curve	Dry	Dark	Fine	Nil (Default)	Unknown	0	1	0
201400220	SH 35	340	N	KOPUA POUNAMU ROAD	201400220	10/16/2014	Thu	1:30	Car/Wagon1 SDB on SH 35 lost control turning right, Car/Wagon1 hit non-specific cliff, non-specific tree	CAR/WAGON1, alcohol suspected, lost control when turning, speed entering corner/curve	Dry	Dark	Fine	Nil (Default)	Nil	1	2	0
201113254	SH 35	380	S	KOPUA TARAKIHI ROAD	201113254	11/29/2011	Tue	6:55	Truck1 SDB on SH 35 lost control turning right, Truck1 hit non-specific cliff	TRUCK1, other fatigue, speed entering corner/curve	Dry	Overcast	Fine	Nil (Default)	Nil	0	1	0
201013526	SH 35	1200	E	MAKORORI BEACH ROAD	201013526	12/27/2010	Mon	18:45	Car/Wagon1 EDB on SH 35 lost control on curve and hit Car/Wagon2 head on	CAR/WAGON1, new driver/under instruction, speed entering corner/curve	Dry	Bright sun	Fine	Nil (Default)	Nil	0	2	1
201416692	SH 35		I	PA ROAD	201416692	10/20/2014	Mon	12:00	Truck1 NDB on SH 35 overtaking hit Truck2 NDB on	TRUCK1, overtaking vehicle signalling right	Dry	Overcast	Fine	T Junction	Give way	0	1	0



Crash ID	Crash road	DIST	DIR	Side road	ID	Date	Day	Time	Description of events	Crash factors	Road	Natural light	Weather	Junction	Control	FAT	SEV	MIN
									SH 35 turning right	turn, overtaking with insufficient visibility, speed on straight								
201326181	SH 35	1630	S	TE HUE ROAD	201326181	10/12/2013	Sat	12:35	Motorcycle1 SDB on SH 35 lost control on curve and hit SUV2 head on	MOTORCYCLE1, lost control when turning, speed entering corner/curve	Dry	Bright sun	Fine	Nil (Default)	Nil	0	1	0
201610205	SH 35	800	W	WAIHUA ROAD	201610205	1/2/2016	Sat	8:45	Van1 EDB on SH 35 lost control turning right	VAN1, alcohol test above limit or test refused, cutting corner on bend, lost control when turning, speed entering corner/curve	Wet	Overcast	Light rain	Nil (Default)	Unknown	0	1	0
201516177	SH 35	360	E	WAIHUKA ROAD	201516177	7/17/2015	Fri	13:35	Car/Wagon1 NDB on SH 35 lost control turning left, Car/Wagon1 hit non-specific bridge, non-specific cliff, non-specific fence, non-specific tree	CAR/WAGON1, lost control when turning, speed entering corner/curve	Dry	Bright sun	Fine	Nil (Default)	Unknown	0	1	0
201410710	SH 35	7300	E	WAIKURARA ROAD	201410710	1/29/2014	Wed	14:50	Motorcycle1 WDB on SH 35 swinging wide hit Car/Wagon2 head on	MOTORCYCLE1, speed entering corner/curve, swung wide on bend	Dry	Bright sun	Fine	Nil (Default)	Nil	0	1	0
201211092	SH 35	250	S	WAIRERE ROAD	201211092	1/23/2012	Mon	20:56	Car/Wagon1 SDB on SH 35 lost control turning left, Car/Wagon1	CAR/WAGON1, alcohol test above limit or test refused, lost control when turning,	Dry	Dark	Fine	Nil (Default)	Nil	0	1	0

Crash ID	Crash road	DIST	DIR	Side road	ID	Date	Day	Time	Description of events	Crash factors	Road	Natural light	Weather	Junction	Control	FAT	SEV	MIN
									hit non-specific cliff	new driver/under instruction, speed entering corner/curve								
201212604	SH 35 WAIAPU ROAD	380	S	KOPUA TARAKI HI ROAD	201212604	7/10/2012	Tue	16:50	Car/Wagon1 SDB on SH 35 WAIAPU ROAD lost control turning right, Car/Wagon1 hit non-specific embankment, non-specific tree	CAR/WAGON1, lost control when turning, other inappropriate speed, ENV: slippery road due to rain	Wet	Twilight	Light rain	Nil (Default)	Nil	0	1	0
201311297	SH 35 WAIAPU ROAD	450	N	WAIHUKA ROAD	201311297	2/16/2013	Sat	23:00	Car/Wagon1 NDB on SH 35 WAIAPU ROAD lost control turning right, Car/Wagon1 hit non-specific cliff	CAR/WAGON1, alcohol test above limit or test refused, speed entering corner/curve, too far left, while returning to seal from unsealed shoulder	Dry	Dark	Fine	Nil (Default)	Nil	0	1	0
201310029	SH 35 WHANGARA ROAD	1930	N	GLENROY ROAD	201310029	7/2/2013	Tue	18:30	Van1 SDB on SH 35 WHANGARA ROAD lost control turning right, Van1 hit non-specific embankment, non-specific fence, non-specific tree, non-specific ditch	VAN1, alcohol test above limit or test refused, casualty thrown from vehicle, lost control when turning, other inappropriate speed	Dry	Dark	Fine	Nil (Default)	Nil	1	2	0
201950076	SHELTON ROAD		I	WHARF ROAD	201950076	1/28/2019	Mon	15:50	Motorcycle1 SDB on Wharf missed	MOTORCYCLE1, alcohol suspected, lost control when	Dry	Bright sun	Fine	T Junction	Nil	0	1	0

Crash ID	Crash road	DIST	DIR	Side road	ID	Date	Day	Time	Description of events	Crash factors	Road	Natural light	Weather	Junction	Control	FAT	SEV	MIN
									intersection or end of road	turning, speed entering corner/curve								
201410593	SPONGE BAY ROAD	1160	S	SH 35	201410593	2/14/2014	Fri	19:45	Car/Wagon1 SDB on SPONGE BAY ROAD lost control turning right, Car/Wagon1 hit non-specific tree	CAR/WAGON1 , alcohol test above limit or test refused, lost control when turning, speed entering corner/curve	Dry	Bright sun	Fine	Nil (Default)	Nil	0	1	0
201312652	STANLEY ROAD	50	N	BAYLY ST	201312652	10/20/2013	Sun	11:35	Car/Wagon2 SDB on STANLEY ROAD opened door into path of another party, Cycle1 hit non-specific parked	CAR/WAGON2 , did not check/notice another party behind CYCLE1 , other did not see or look for other party, speed on straight	Dry	Bright sun	Fine	Nil (Default)	Nil	0	1	0
201811999	STOUT ST		I	DALRYMPLE ROAD	201811999	1/13/2018	Sat	15:20	Car/Wagon1 EDB on Stout Street hit Van2 crossing at right angle from right, Car/Wagon1 hit non-specific fence, Van2 hit non-specific fence	VAN2, alcohol suspected, failed to give way at priority traffic control, speed entering corner/curve	Dry	Bright sun	Fine	Crossroads	Give way	0	2	2
201715800	STOUT ST		I	PINE ST	201715800	7/8/2017	Sat	19:30	Car/Wagon1 WDB on Stout Street lost control turning right, Car/Wagon1 hit non-specific bridge	CAR/WAGON1 , alcohol test above limit or test refused, speed entering corner/curve	Dry	Dark	Fine	T Junction	Give way	0	2	1

Crash ID	Crash road	DIST	DIR	Side road	ID	Date	Day	Time	Description of events	Crash factors	Road	Natural light	Weather	Junction	Control	FAT	SEV	MIN
201952398	STOUT STREET	65	N	ELSTHORPE AVENUE	201952398	3/27/2019	Wed	12:26	Car/Wagon1 SDB on Stout St overtaking hit Car/Wagon2 SDB on Stout St turning right	CAR/WAGON2 , alcohol test below limit CAR/WAGON1 , other intentional or criminal, overtaking at a junction, speed on straight	Dry	Bright sun	Fine	Driveway	Nil	0	1	0
201310021	TAUWHAREPA RAE ROAD	240	W	MITCHELL ROAD	201310021	5/20/2013	Mon	12:50	Truck1 WDB on TAUWHAREPA RAE ROAD swinging wide hit Truck2 head on	TRUCK1, alcohol not suspected, tested and -ve (most use only, speed entering corner/curve, swung wide on bend	Wet	Bright sun	Fine	Nil (Default)	Nil	1	1	0
201311162	TAUWHAREPA RAE ROAD	1100	N	TAKAPAU ROAD	201311162	1/19/2013	Sat	20:45	SUV1 SDB on TAUWHAREPA RAE ROAD lost control turning left, SUV1 hit non-specific bridge	SUV1, alcohol test above limit or test refused, speed entering corner/curve, swung wide on bend, ENV: loose material on seal	Dry	Dark	Fine	Nil (Default)	Nil	0	1	0
201112601	TINIROT ROAD	7100	W	BRUNTON ROAD	201112601	9/11/2011	Sun	19:00	Car/Wagon1 NDB on TINIROT ROAD lost control turning right, Car/Wagon1 hit non-specific embankment, non-specific fence	CAR/WAGON1 , speed entering corner/curve, ENV: slippery road due to rain	Wet	Dark	Light rain	Nil (Default)	Nil	0	1	2

Crash ID	Crash road	DIST	DIR	Side road	ID	Date	Day	Time	Description of events	Crash factors	Road	Natural light	Weather	Junction	Control	FAT	SEV	MIN
201973797	TINIROT O ROAD	4480	W	JACKMAN ROAD	201973797	11/5/2019	Tue	13:50	Motorcycle1 EDB on TINIROT ROAD lost control turning right; went off road to left	MOTORCYCLE1 , speed entering corner/curve, too far left	Dry	Bright sun	Fine	Nil (Default)	Unknown	0	1	0
201311797	TYNDALL ROAD		I	HUXLEY ROAD	201311797	5/25/2013	Sat	17:15	Car/Wagon2 turning right hit by oncoming Motorcycle1 WDB on TYNDALL ROAD	CAR/WAGON2 , did not check/notice another party from other dirn, failed to give way at priority traffic control MOTORCYCLE1 , alcohol suspected, other lights and reflectors, speed on straight	Dry	Overcast	Fine	Crossroads	Give way	0	1	0
201012611	TYNDALL ROAD	50	S	HUXLEY ROAD	201012611	8/11/2010	Wed	0:10	Car/Wagon1 SDB on TYNDALL ROAD lost control turning left, Car/Wagon1 hit non-specific pole	CAR/WAGON1 , alcohol suspected, speed entering corner/curve, worn tread on tyre	Dry	Dark	Fine	Nil (Default)	Nil	0	2	0
201610378	WAIMATA VALLEY ROAD	4500	N	MANDER ROAD	201610378	3/3/2016	Thu	20:10	Motorcycle1 NDB on WAIMATA VALLEY ROAD lost control turning left, Motorcycle1 hit non-specific fence	MOTORCYCLE1 , lost control when turning, speed entering corner/curve	Dry	Twilight	Fine	Nil (Default)	Nil	0	1	0
201716017	WAIOMATATI	1030	N	WALKER ROAD	201716017	7/26/2017	Wed	0:50	Car/Wagon1 SDB on Waiomatatini road, Ruatoria	CAR/WAGON1 , alcohol test above limit or test refused,	Dry	Dark	Fine	Nil (Default)	Unknown	0	2	0



Crash ID	Crash road	DIST	DIR	Side road	ID	Date	Day	Time	Description of events	Crash factors	Road	Natural light	Weather	Junction	Control	FAT	SEV	MIN
	NI ROAD								lost control turning right, Car/Wagon1 hit non-specific tree, non-specific ditch	speed entering corner/curve								
201312650	WHAREKOPAE ROAD	5	E	KIRKPATRICK ROAD	201312650	10/12/2013	Sat	22:32	Motorcycle1 EDB on WHAREKOPAE ROAD lost control turning right, Motorcycle1 hit non-specific ditch	MOTORCYCLE1, alcohol test above limit or test refused, other overtaking, speed entering corner/curve	Dry	Dark	Fine	T Junction	Nil	0	1	0
201400105	WHAREKOPAE ROAD		I	KIRKPATRICK ROAD	201400105	5/15/2014	Thu	19:00	Car/Wagon1 NDB on WHAREKOPAE ROAD lost control turning left, Car/Wagon1 hit non-specific pole	CAR/WAGON1, alcohol not suspected, tested and -ve (most use only, lost control when turning, speed entering corner/curve	Wet	Dark	Light rain	Crossroads	Give way	1	0	0
201213097	WHAREPONGA ROAD	4000	E	WAIAPU ROAD	201213097	12/28/2012	Fri	17:30	SUV1 SDB on WHAREPONGA ROAD lost control turning right, SUV1 hit non-specific ditch	SUV1, lost control - road conditions, other vehicle controls, speed entering corner/curve, ENV: road unusually narrow	Dry	Overcast	Fine	Nil (Default)	Nil	0	1	2
201210052	WHATATUTU ROAD	280	N	SH 2 MATAWAI ROAD	201210052	9/15/2012	Sat	19:00	Van1 SDB on WHATATUTU ROAD lost control turning right, Van1 hit non-specific fence, non-specific pole	VAN1, alcohol test above limit or test refused, lost control when turning, speed entering corner/curve	Dry	Dark	Fine	Nil (Default)	Nil	1	0	0

Crash ID	Crash road	DIST	DIR	Side road	ID	Date	Day	Time	Description of events	Crash factors	Road	Natural light	Weather	Junction	Control	FAT	SEV	MIN
201511894	WHATA TUTU ROAD	300	N	TAPUIHI KITIA ROAD	201511894	1/21/2015	Wed	18:45	Car/Wagon1 SDB on WHATATUTU ROAD lost control turning left, Car/Wagon1 hit non-specific fence	CAR/WAGON1 , lost control when turning, other inappropriate speed, ENV: heavy rain, other slippery road	Wet	Twilight	Heavy rain	Nil (Default)	Unknown	0	1	0

DRAFT

**Gisborne**

2nd Floor, 74 Grey Street,  
Gisborne 4010  
PO Box 13-052, Armagh  
Christchurch 8141  
Tel +64 6 863 1162

Please visit [www.stantec.com](http://www.stantec.com) to learn more about how  
Stantec design with community in mind.

DRAFT