

# TAIRĀWHITI

## Enviroschools



Term 1

**Kia ora koutou katoa,**

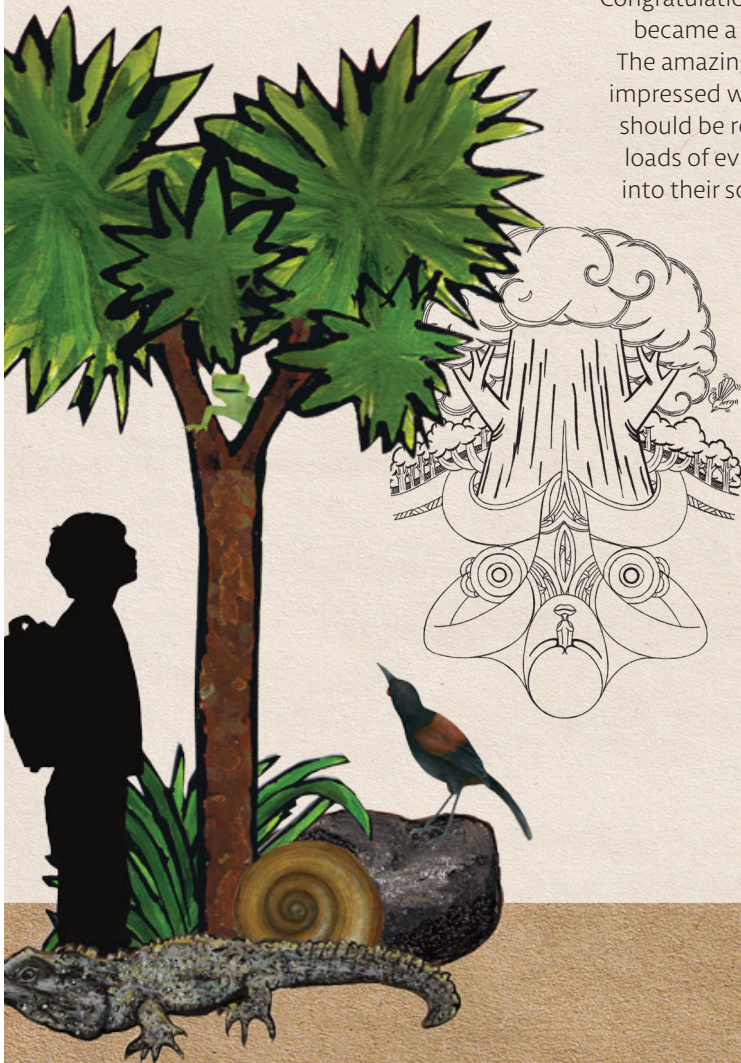
I hope you're feeling recharged and refreshed and ready to jump on the Enviroschools waka. I've had a great holiday enjoying cold clean rivers to swim in and magnificent native bush to tramp in. Taonga that I believe all of us need to celebrate and protect. We have lots of fun events and ideas planned for 2020 so get in touch ASAP to get started!



## Green Gold Reflection

Congratulations St Mary's School for reflecting at green gold in September 2019. They became a bronze school back in 2013 and were long overdue for a silver reflection. The amazing mihi whakatau set the stage for an inspiring powerful day. We were so impressed with their commitment to the Enviroschools journey, it was decided they should be reflecting at green gold. The reflection team really stepped up and found loads of evidence of all five guiding principles and the green gold sentences woven into their school life. We appreciated how their special character of being a Catholic school looking after God's creations complemented the Enviroschools kaupapa. Huge mihi to the reflection team students, Allie Naden, Miranda McCormack and Perky.

St Mary's receiving their green gold Enviroschools sign from Mayor Rehette Stoltz



# TAIRĀWHITI Enviroschools



The Tairāwhiti Enviroschools Action Fund closes at the **end of Term 1 2020.** Please discuss your application with your facilitator and get it into us sooner rather than later.

## Action Fund Projects 2019



A huge mihi to Eastland Port for continuing to sponsor this fantastic initiative. We love supporting our local Enviroschools to make the change their students want. These are the awesome projects that we made happen in 2019.

Te Wharau School had a problem with piles of green waste so the students researched possible solutions. They ended up buying a second hand mulcher/chipper which shreds the green waste into beautiful mulch that can be used in the maara kai (food garden), pathways and native tree areas. This mobile chipper is available for all our Enviroschools to borrow so if you have some weeds or trees that need a tidy up, contact Kim Perano 06 868 9819. We also have a scrub bar available from St Mary's School to really sort out your outdoor classroom spaces! Contact Maria.



Te Wharau students enjoying using their chipper to make magnificent mulch

Gisborne Boys' High School did a waste audit to discover what was really going on with their rubbish. Paper was thoughtlessly being tossed in with general rubbish so they now have cool new paper recycling bins in every class. These were launched at an assembly and articles were written for the school magazine and newsletter. We love their new compost bins they designed and created from pallets. Next up they will be sorting out the mixed recycling.



Mangapapa heads down, working hard planting native trees beside their awa.

Mangapapa School employed someone to clear their weedy blackberry infested bank beside the Mangapapa Stream. This was a huge job that enabled most of the school to then be able to be involved in planting and mulching native trees. This magnificent learning area can now be used for freshwater monitoring.

Wainui shade house crew students teaching the whole school how to pot up Tī Kōuka

Wainui Beach School have been busy bees in their native tree nursery. The shade house crew, with assistance from Kauri, grows trees from seed and cuttings. In 2019 they donated 200 trees to

Mangaone wetland, the school rongoā garden and Sistersons Lagoon. They used their money to buy supplies like trays, potting mix, seed raising mix and cutting mix.



GBHS compost bins upcycled from pallets



Great to see GBHS students showing how their new paper recycling bins will work at assembly

Room One at St Mary's has a vision for the Rerenga Awa beside the Taruheru River to be a place of learning and tranquillity where students go to meditate, pray, read, do their lessons or learn about our native plants and how to look after God's creations. The students realise this is a long term project and it will take years for the native trees to shade the awa but the short term gain will be encouraging bird life, native insects and grubs back into the school. They have been monitoring pests, setting up DOC 200 and victor rat traps but decided the Goodnature traps would work best as they are self-resetting. We funded an A12 possum trap and A24 rat trap and Sam Gibson has been in to help them set up and even donated another trap.



St Marys' new Goodnature trap.

Waikirikiri School are also growing native trees in their nursery with Tui Foster. Matariki was celebrated by planting 50 Tī Kōuka trees at their kura to continue their native tree border and 20 were planted at Sistersons Lagoon. They have bought nursery supplies with the aim of growing native trees that support bees.



Working hard in their native tree nursery.



# TAIRĀWHITI

## Enviroschools



## Water Testing Kits

We had several applications for kits like the SHMAK kit to enable class water testing. We love to support this mahi. Please contact Paul Murphy (Environmental Science Team Leader) at the Council directly to borrow a kit: Paul.Murphy@gdc.govt.nz.

## Recycling at School Events

We would love to encourage all events at your kura to aim to be waste free. Plan how to reduce and refuse waste right from the start. How could you aim to have no rubbish left over? There are bin station sets and recycling flags available through Council to borrow, 06 867 2049. These are great for galas and any events with food. The bins are coded yellow for mixed recycling (glass, cans, plastic #1 and 2), red for landfill, and green for food waste. It's always best to cover up existing rubbish bins so people have to come to your recycling station to correctly dispose of their waste. Best to also have trained kids to staff this station so they can help everybody put their waste in the correct bin. Kirsty and Kauri are also available to help set up this goodness!



## Māori Perspectives/ Rethinking Waste Workshop

What a fabulous day learning about the zero waste kaupapa through Māori perspectives. Kia ora to our awesome presenters and schools for sharing the day with us. We started at Puhi Kai Iti with Uncle Albie, learnt about tipuna Te Maro and Maia, checked out the Seabin and stormwater grate at the harbour, then spent time on Tītirangi learning about harakeke, rongoā, kūmara, plastic and planted a hue seed. Mihi and Jordan, the wonderful Whaia Tītirangi wāhine demonstrated the tikanga around harvesting kawakawa for Rongoā Māori. They also gave a quick kōrero about the small midden pit which had shell remains present on Tītirangi. This gave a good comparison to what early Māori cooks left after a kai where as we in the modern era can have a kitchen rubbish bin full of plastic, tin cans and other non-biodegradable items.

Check out more details on this fun workshop based on Tītirangi in October.

<https://enviroschools.org.nz/creating-change/stories/rethinking-waste-through-a-maori-perspective-challenged-us-to-make-it-authentic/>

During this workshop we worked with Grant from Eastland Port. He proudly showed us how the Seabin works and has sadly passed away. Thank you again and our thoughts are with his family.



Congratulations Matawai School for winning our follow up competition. Love all the mahi you did at school to share what you learnt.



# TAIRĀWHITI Enviroschools



## Stormwater Art

We love that St Mary's School followed up from the stormwater grate activity at our 2018 rethinking waste workshop and have put netting under their main grates and designed these great (grate!) signs.



## Gisborne District Council DrainWise Art Competition

**Win \$250!**  
**DRAIN ART COMPETITION**

Use your creativity to help raise awareness of stormwater pollution in Gisborne!

For more information, visit [www.gdc.govt.nz/drainwise](http://www.gdc.govt.nz/drainwise)

Entries close February 28, 2020

Be in to win \$250 and see your artwork on a stormwater grate in town. The competition is open to anyone from Tairāwhiti Gisborne – all ages welcome.

The competition closes **12pm Friday 28 February**, so check out the GDC website for all the details and the form to enter the competition:  
[www.gdc.govt.nz/drainwise-art-competition/](http://www.gdc.govt.nz/drainwise-art-competition/)



## Climate Change Resources

This level 4 programme aims to: increase awareness of climate change and explain the role science plays in understanding it; understand both the response to and impacts of climate change – globally, nationally and locally; explore and act on opportunities to contribute to reducing and adapting to the impact of climate change on everyday life. Kirsty and Kauri are here to help you work through this if you or your students are interested.

[https://nzcurriculum.tki.org.nz/Curriculum-resources/Education-for-sustainability/Tools-and-resources?fbclid=IwAR3tDaF-ctwh6fBb18vQuHo\\_eTbZmekYCigvKwsc9f5AOTyrL3JyyoaZ0sU](https://nzcurriculum.tki.org.nz/Curriculum-resources/Education-for-sustainability/Tools-and-resources?fbclid=IwAR3tDaF-ctwh6fBb18vQuHo_eTbZmekYCigvKwsc9f5AOTyrL3JyyoaZ0sU)



Darnelle Timbs | P 06 869 2727 | E [darnelle.timbs@gdc.govt.nz](mailto:darnelle.timbs@gdc.govt.nz)

Kirsty Gaddum | E [kirstygaddum@gmail.com](mailto:kirstygaddum@gmail.com)

Kauri Forno | E [kauri\\_99@yahoo.co.uk](mailto:kauri_99@yahoo.co.uk)

Supported by: Gisborne District Council | Department of Conservation | HB Williams Trust | JN Williams Trust

