

# Draft Wharekāhika and Potaka Community Plan

2014

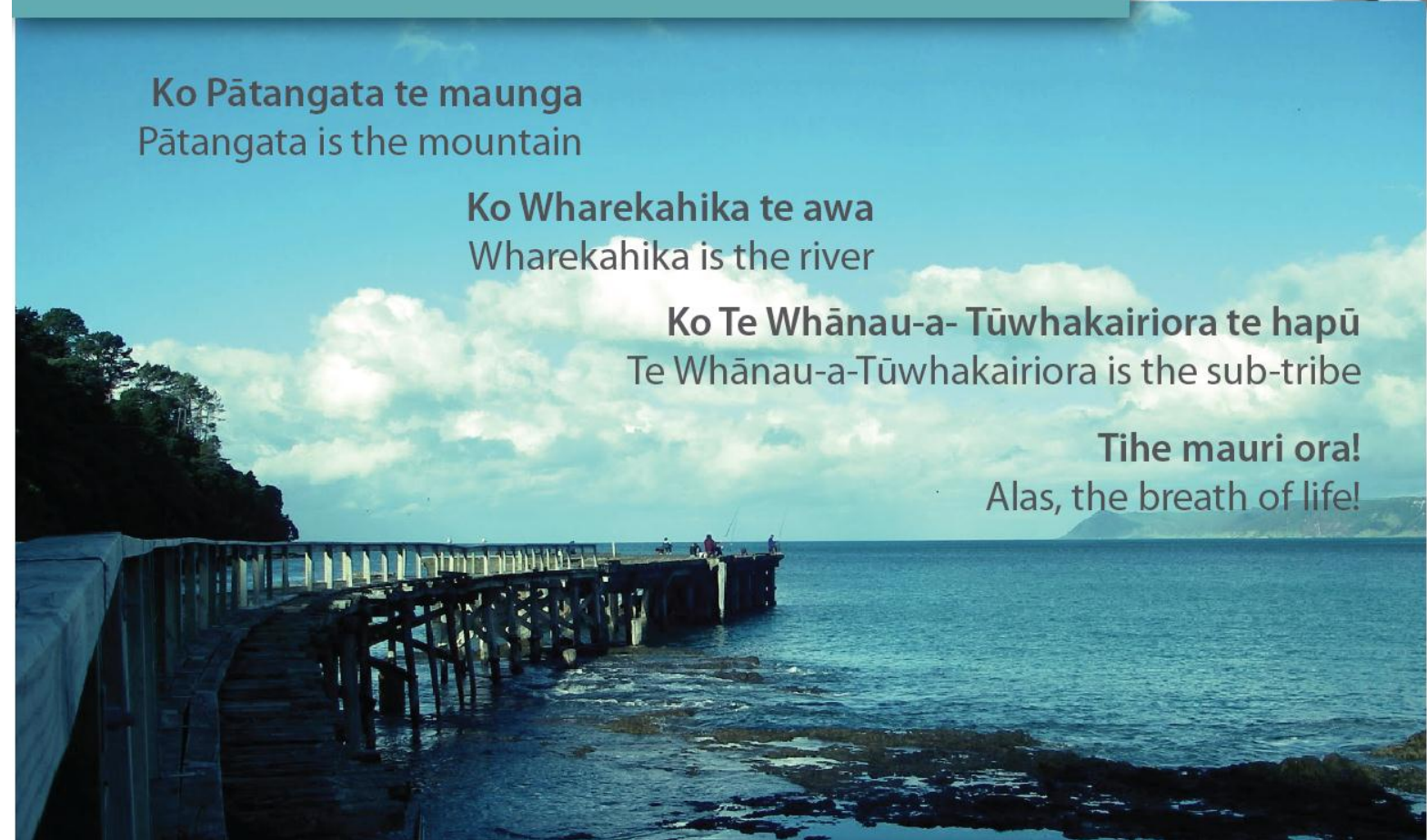


**Ko Pātangata te maunga**  
Pātangata is the mountain

**Ko Wharekahika te awa**  
Wharekahika is the river

**Ko Te Whānau-a- Tūwhakairiora te hapū**  
Te Whānau-a-Tūwhakairiora is the sub-tribe

**Tihe mauri ora!**  
Alas, the breath of life!



# Foreword

Community Plans are an important tool for our community.

It was pleasing to see a good number of interested community people participate in the community plan workshops, and I thank you all for the wonderful ideas you have contributed.

The Councillors and I appreciated your ideas and we say thank you, you make our job easier by telling us what you hope for.

It is great to dream and put those ideas onto paper. We need to have courage to explore new ideas that will meet the needs of our communities, ones that will allow us to stand out as a unique and special community in which to live and visit.

From now it takes action - an action plan I am committed to with your agreement. I look forward to the progress we are going to make in your community, and we hope that your community will be inspired to do more and complement what has been proposed.

Be inspired, be courageous, and most importantly of all, take action.

Thank you all, we look forward to working with you.



A handwritten signature in black ink, appearing to be 'Meng Foon'.

Meng Foon  
**Mayor**

# Acknowledgements

This Community Plan was led by the Wharekāhika / Pōtaka community with support from Gisborne District Council. We would like to publicly acknowledge the following people for their time, support and passion to see positive change in our place:

- Ani Pahuru-Huriwai
- Chantelle Houkamau
- Edna Caldwell
- Fiona Philips
- Iritana Whitehead
- Jeffrey Ruha
- Joe Bauckham
- Julie Lawson
- Kerry Kururangi
- Legion Jai Houkamau
- Lloyd Lawson
- Lorna Pahuru
- Louina Houkamau
- Mark Caldwell
- Michelle Smith
- Moki Raroa
- Seanne Williams
- Tamara Pahuru-Raroa
- Wayne Bellby
- Wayne Tihore

We acknowledge the support of Te Rūnanganui o Ngāti Porou and Gisborne District Council.

Insert TRONPUuni logo





# Contents

Foreword.....	i
Acknowledgements .....	ii
Contents .....	iv
Introduction.....	1
Community Engagement .....	1
Content of the Plan.....	1
Healthy and Resilient Environment .....	3
Our priority projects .....	4
Making it happen .....	4
Healthy and Resilient Community .....	5
Our priority projects .....	6
Making it happen .....	6
Measuring success.....	7
Appendix 1 .....	1
All ideas submitted - raw data from community engagement .....	1

# Introduction

The Wharekāhika and Pōtaka Community Plan (2014) captures the Wharekāhika and Pōtaka community's long-term vision for our place. The Plan is a living document with the potential to evolve with the support of our community.

## Community Engagement

Our community developed the plan content at two community workshops in 2013.

In developing the Plan, the community considered three key questions:

- what are the key values that make Wharekahika and Pōtaka a great place to live and what do we want to protect about our place?
- what would we like to see change about our place?
- what do we want our place to be like in 20 years time?



## Content of the Plan

The community identified two key goals that form the basis of the Community Plan:

- a healthy and resilient natural environment;
- a healthy and resilient community.

Under each key goal are priority projects to be achieved over the next few years. Our community sees these priority projects as the first steps towards the Wharekāhika and Pōtaka of the future.

# Our place

Wharekāhika (Hicks Bay) and Pōtaka are at the northern end of the Tairāwhiti Rohe. While we are the most rurally isolated communities of the Tairāwhiti Rohe, we are rich in natural resources. Our communities are close-knit & very passionate about our environment, on land and sea.

Pōtaka sits on the boundary of Te Whānau-a-Apanui and Ngāti Porou. It has a school, servicing the Waikura Valley, and also has children from Whangaparāoa and Wharekāhika who prefer a mainstream option for education. Their desire is to also have an early childhood centre in the near future. Pōtaka also has a beautiful marae, that provides a cultural focus for the hapū, Te Whānau-a-Tapaeururangi. Pōtaka is also bountiful in natural resources, with the famed Lottin Point (Whakatiri) on its coastline, where the Lottin Point Motel is also located. A popular destination for tourists, fisher people, charter boats, divers and hunters, a concern is the overuse and abuse of these kāpata kai. It is critical to the long-term survival of our communities as it provides also for surrounding hapū.

Wharekāhika is a small community, 15km from Pōtaka. It boasts a thriving kura kaupapa, a local store, a community centre, beautiful beaches, a motel lodge, the picturesque Waihirere waterfall, sheltered by the Raukumara Ranges. The local hapū are Te Whānau -a-Te Aotaki and Te Whānau-a-Tūwhakairiora, who connect to the local marae, Hinemaurea. This cultural icon serves as our community hall, and cultural bastion. We also have a wharf which for a short time in the 1920s exported meat from the local Freezing Works, flax and lime. It is one of the deepest ports in the country. Currently the wharf is in disrepair, and it is our dream to reclaim ownership of the Wharf, which we see as a key economic driver in the future. Our kāpata kai on land and sea are sought after by tourists, fisher people, charter boats, commercial fisherman, and hunters. Wharekāhika has the same concerns as our neighbours in Pōtaka in regards to the overuse and abuse of our stocks, therefore these are key projects in our community plan. With our thriving kura kaupapa, Te Kura Kaupapa Maori o Kawakawamaitawhiti and sporting clubs, Hicks Bay Boxing Club, Tūwhakairiora Waka Ama, Hicks Bay Rugby Club (which celebrates its Centennial this year), and a community that is beginning to embrace the Iron-Maori kaupapa, we excitedly anticipate the building of our community gym.

While the economic outlook for our end of the region is not very good currently, we have a long-term vision for our communities that will mean that we are rich economically, but not at the risk of our natural resources, which we see as the "jewels in our Crown."

We thank the GDC for the opportunity to participate in this plan, and look forward to working with them and others to put our dreams into action.

# Healthy and Resilient Environment

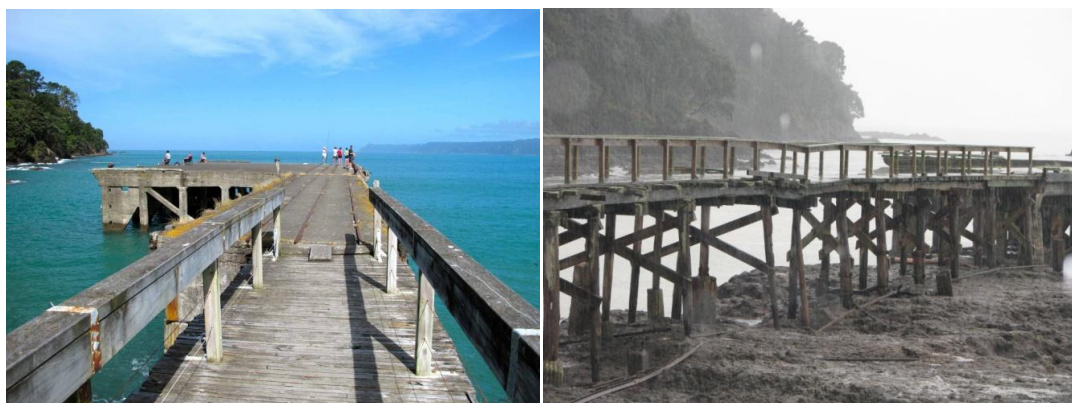
A healthy environment is important to our community. We rely on it for sustenance and wellbeing.

Our local kāpata kai are important to our community and are being depleted by over-fishing, especially pāua. Our community wants to see these stocks taken better care of so they remain sustainable for future generations.

Our native bush likewise needs to be cared for better. We are losing important biodiversity due to invasive weeds and pests. We need our local landowners to have the knowledge and skill to be able to effectively manage these pests.



One of our key assets is the Hicks Bay Wharf. It is a local attraction and used by locals for recreation purposes. Currently it is in a poor state of repair and our community would like to see it restored, maintained and returned to hapū.





## Our priority projects

- Protection of Local Fisheries Stock
- Pest Management
- Restoration and Return of Hicks Bay Wharf

## Making it happen

Task description	Cost (est)	Resources	Timeframe
<b>Protection of Local Fisheries Stock</b>			
1. Community meeting with MAF to discuss local issues	-	MAF	6 May 2014
2. Work with MAF to identify options for fisheries officer to be based at Hicks Bay	-	Community / MAF / GDC support	June 2014
3. Fisheries officer in place	TBC	MAF / Community support	October 2014
<b>Pest Management</b>			
1. Identify key animal and plant pests causing issues locally	-	Community / GDC support	May 2014
2. Prepare pest control info for community	\$1k	GDC	June 2014
3. Develop a programme of landowner education	\$5k	GDC / EIT / Community support	August 2014
<b>Restoration of Hicks Bay Wharf</b>			
1. Complete full assessment of options for wharf	\$50,000	GDC	June 2016
2. Investigate options for returning wharf and associated lands to Hapū /Iwi	-	GDC / Hapū /Iwi	June 2016
3. Decision on wharf ownership and management	-	GDC / Hapū /Iwi	August 2016
4. Implement decision	TBC	TBC	TBC
<b>Upgrade of Public Toilets</b>			
1. Investigate options for new toilet facilities in Hick's Bay	-	GDC	December 2014
2. Complete works to install toilet facilities if deemed appropriate	\$50,000	GDC	June 2015
<b>Erosion control Wharekahakia River</b>			
1. Identify erosion issues on Wharekahika River	-	Community	December 2014
2. Investigate options for erosion control in Wharekahika catchment	TBC	Landowners / Community / GDC	TBC

# Healthy and Resilient Community

*He aha te mea nui o tēnei ao ...  
he tāngata, he tāngata, he tāngata*

Our people are precious. They have a deep connection to our place and desire to see the community continue to flourish.

We are a youthful population with a high proportion of people under 15 years of age. Our young people stand tall in their knowledge of who they are and where they come from. We have an excellent kura kaupapa that feeds their hungry young minds and we have beautiful marae that nourish them spiritually and socially. We want the best for our young people and their whānau. More places to play together and things to do together are important goals for us.



**Hinemaurea Marae — Tūwhakairiora (whare tipuna) at left, and Hinemaurea (wharekai) right.**

We have a rich heritage around Wharekāhika and as our community changes, we want to preserve and celebrate our history and ancestry with pride and authenticity. The Tairāwhiti Navigations Project is one avenue through which we can look to do this.

Our community is fabulous – our people choose to be here for the peaceful lifestyle and to keep the home fires burning. We need to significantly improve the accessibility and affordability of internet in our place so we can keep in touch with the rest of the world. We want to remain connected with whānau who are away, to maximise sustainable economic development opportunities and to be aware of new educational tools and practices. Internet would mean we have the world on our plate **and** our awesome lifestyle.

## Our priority projects

- Community Centre
- Youth and Whanau Activities
- Heritage Project
- Broadband Connections

## Making it happen

Task description	Cost (est)	Resources	Timeframe
<b>Community Gym</b>			
1. Secure funding for community gym to be built	-	Community / GDC support	December 2013
2. Build community gym	\$2.3 million	Community	December 2014
3. Opening of community gym	\$5k	Community	December 2014
<b>Youth and Whanau Activities</b>			
1. Develop a community events calendar	-	Community	July 2014
2. Erect a community noticeboard for events	\$2k	Community / GDC	September 2014
3. Hold three community events per annum	\$3k	Community / GDC	Ongoing
<b>Heritage Project</b>			
1. Community meeting to understand the Tairāwhiti Navigations Project	-	GDC / Community support	6 May 2014
2. Identify key heritage features and stories to be promoted	-	Community / GDC support	December 2014
3. Secure funding for heritage promotion	-	GDC / Community support	May 2015
4. Implement heritage project	TBC	GDC / Community support	TBC
<b>Broadband Connections</b>			
1. Investigate broadband connections options	-	Te Rūnanganui o Ngati Porou / Community	May 2014
2. Community meeting with information on options	-	Community / Te Rūnanganui o Ngati Porou	May 2014

# Measuring success

We will measure success in terms of the completion of priority projects within timeframes and budgets.

We will also measure success in terms of:

- Satisfaction with community and stakeholder engagement process
- Satisfaction with the Township Plan document
- Satisfaction with the quality and timeliness of implementation.



## All ideas submitted - raw data from community engagement

### Likes

Quite tidy

Community Centre and facilities

Quiet time fishing off wharf

Wild ginger sprayed by council great kill!

Tarsealed roading and footpaths

New tarseal towards the wharf

No boat ramp at Lottin Point

Our new bridge

Paradise, we live in – live off the land

Nice activity spot Onepoto

Buzz at school (kura)

The shop

No drilling or fracking

### Dislikes

Rubbish along the side of the roads

The tarsealed Lottin Point Road

Rubbish being dumped

Council rubbish bins outside shop, Onepoto

That Lottin Point Fishing Club has never consulted with local hapū and take in their big boats

Speeding drivers on windy road to Onepoto

Nowhere to park cars off the road

The hours to the dump are too restrictive

Petrol-heads hooning along beach

Inadequate street lighting, lack of maintenance

Possible pollution from existing housing systems

Speed through township

No value for the rates we pay

Community Hall placed on Council land

Drunk drivers

Introduced exotic trees over-running natives at alarming rate

Onepoto-Beach toilet often not working

## Improvements

Play-ground for kids

Speed bumps in windy road to Onepoto

Beautify small intersection on Onepoto Road and Makahuri Place

Rubbish at Lottin Point

Honary or permanent paid MAF Officer in Hicks Bay and Lottin Point

Solar power

Public toilets on public land

Free Wi-Fi at Te Puna Manaaki

Community library at Onepoto

Signage at crossroads

Parking access in Paddock for cars (off road) metal nice planting carvings heritage site

Cleaning up our rivers and beaches

Rubbish bins located at water hole

Recycling bins available 24/7 for the community to use 24/7

Free green waste compost area

Wharf returned to hapū in good condition

MoU with GDC

More rubbish bins

Speed bumps outside school

Community gym

Upgrade toilets

Heritage information boards, posted on-sites of interest

Use local labour to get rid of weed trees

Council rubbish receptacles outside store

Beautify council reserve at Onepoto

Wharekāhika Pōtaka world heritage sites

Footpath to Onepoto

Big "Welcome to Hicks Bay" sign off Main Road

Big enclosed recycling station at Hicks Bay rather than the dump

Regular maintenance on our rivers + drains

Broadband cheap access for all domestic homes

More resources for our Rangatahi sports gear and entertainment youth centre

Get the power pole out of the river on Marae Road

Skateboard ramp area for kids

Summer info centre at Onepoto

Local recycle centre 24/7

Local representation at GDC

Ruataupare new building at Marae – refurbished toilets, awning Wharenui

