

Wainui Beach Management

Key Stakeholder Forum Meeting 7
30 April 2014

Purpose



- Determine what KSF think that Council should take into consideration when making WBMS funding decisions
- Present feedback on 'out of scope' areas put to one side during WBMS process

Agenda

1. Welcome
2. Apologies – Brian Wilson
3. Minutes KSF Meeting 2 April 2014
4. Existing rate funding sources
5. Funding Considerations
 - a. Brainstorm range of Funding Considerations
 - b. Cluster Funding Considerations
 - c. Capture rationale - split task between groups
 - d. Present to plenary
6. GDC approach to 'out of scope' matters
7. Next Steps
8. Next meeting 14 May

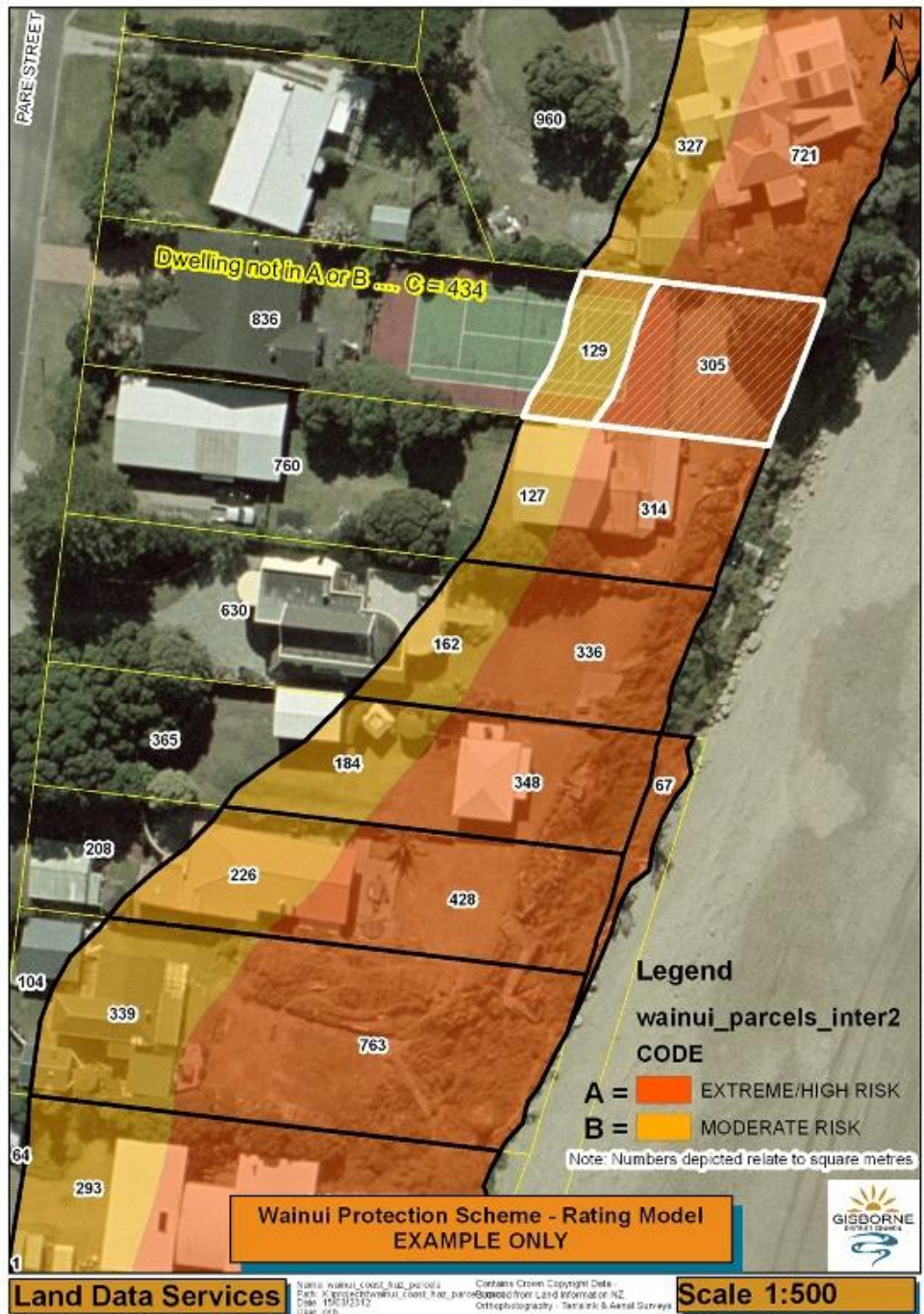


Existing Rate Funding Sources

Two different rates for foredune protection

1. Foredune Protection (about 110 Properties) about \$21k each year
 - Based on hazard zones
 - Dwellings in each zone





Category A (Extreme/High)	Category B (Moderate)	Category C (Outside A & B)	% Rating	
Dwelling			100% in Category A -80% of CV,	
Dwelling			Greater than 25% in Category A – 80% of CV	Less than 25% in Category A - 20% of CV
	Dwelling		100% in Category B – 20% of CV	
	Dwelling		Greater than 25% in Category B – 20% of CV	Less than 25% in Category B – 20% of Land Value for land areas in Category A & B
		Dwelling	100% outside of Category A & B - 20% of Land Value for area of land in Category A & B	

Existing Rate Funding Sources

2. Tuahine Crescent

- Six properties paying a scheme cost
- Loan and paying back through rates
- Will discuss with this group at a later stage



Funding Considerations

Brainstorm possible funding considerations using following headings:

- **Public Good** (e.g. benefits to wider community and users)
- **Contributors** (to erosion)
- **Direct beneficiaries** (e.g. 110 property owners)
- **Indirect beneficiaries** (e.g. surf lifesaving club members)
- **Other** (any other perspective on funding considerations)

Use one flip chart for each heading



Funding Considerations continued

For your allocated headings:

1. Group the considerations
2. Elaborate on rationale – why is important to consider in funding decisions

Funding Consideration	Rationale
XYZ	1. Sjfldjfl 2. sldfjdlf

Write clearly enough for the rationale to be understood by people who have not heard your discussion



'Out of Scope' Matters Raised

Matter Raised	Approach
Volume of stormwater	Continued use of existing planning rules & Low Impact Urban design (L.I.U.D)
Quality of stormwater	Freshwater Plan will cover
Wastewater leaching	Increased monitoring for onsite waste water systems
Stormwater management	Request for Services lodged for assessment of stormwater outlets onto the beach
Protection of Wahi Tapu	Coastal Reserves Management Plan
Use of council road reserve for building relocation	Pursue as part of any GDC Plan changes
Restoration of natural flora & fauna	Dune Enhancement Group & Coastal Review Management Plan
Vehicles on beach	Report to the Police

WBMS Process Completion Chart

Receive and Review WBMS Report from TT and Eco Nomos (10 March 2014)

Project Team Meeting - Preparation for 2nd April Meeting (20 March 2014)

Agenda for KSF Meeting including a copy of the WBMS report - TT & Eco Nomos (24 March 2014)

KSF Meeting - Presentation TT and Eco Nomos (2nd April 2014)

Minutes from KSF meeting and agenda for next meeting (16 April 2014)

KSF Meeting - Funding considerations (23 April 2014)

Minutes from KSF meeting and agenda for next meeting (7 May 2014)

KSF Meeting - Sign off WBMS (14 May 2014)

Public Meeting - WBMS (28 May 2014)

Council Meeting - deliberative (26 June 2014) or Futures Tairawhiti Meeting (18 July 2014)

Council Meeting - Report and Decision (7 August 2014)

Decision to KSF and Public - Media Release (8 August 2014)



Where to From Here?

- Sign off recommended WBMS



Next Steps?

- GDC to add Funding Considerations into WBMS
- KSF meeting 14 May to sign off WBMS
- WBMS public meeting 28 May

