



Gisborne District Council Speed Limits Bylaw 2013

November 2013



Contents

	Page
1. Introduction	1
2. Title	1
3. Date the speed limits come into force	1
4. Interpretation	1
5. Speed limits	1
6. Schedules	1
7. Offences	2
8. Date bylaw made	2
9. Speed restriction zone maps	
Gisborne City Index Sheet	3
Gisborne City (Sheets 1 to 4)	4-7
Hicks Bay	8
Lavenham Road – Patutahi	9
Makaraka	10
Makorori	11
Manutuke	12
Matawai	13
Muriwai	14
Okitu	15
Ormond	16
Patutahi	17
Ruatoria	18
Te Araroa	19
Te Karaka	20
Te Puia Springs	21
Tikitiki	22
Tokomaru Bay	23
Tolaga Bay	24
Wainui	25
Whatatutu	26
Mangapapa School	27

1. Introduction

- 1.1 Pursuant to the Local Government Act 2002, the Land Transport Act 1998 and Land Transport Rule : Setting of Speed Limits 2003, the Gisborne District Council makes this bylaw to set speed limits.

2. Title

- 2.1 The title of this bylaw is the Gisborne District Council Speed Limits Bylaw 2013.

3. Date the speed limits come into force

- 3.1 This bylaw shall come into force upon the date of the resolution referred to in Clause 8.
- 3.2 From the date this bylaw comes into force, any previous bylaws relating to the setting of speed limits on roads under the control of the Gisborne District Council shall be repealed.

4. Interpretation

- 4.1 The terms **road, speed limit and urban traffic area** have the same as in Land Transport Rule : Setting of Speed Limits 2003.
- 4.2 Vehicle has the same meaning as given in s.2 of the Land Transport Act 1998.

5. Speed limits

- 5.1 The roads or areas described in the schedules specified in paragraph 6 or as shown on a map referenced in the schedules are declared to have the speed limits specified in the schedules and maps which are part of this bylaw.

6. Schedules

- Schedule 1: Urban Traffic Areas – Roads that have a Speed Limit of 50 km/h
- Roads shown in red on the following named maps are in designated urban traffic areas that have a speed limit of 50 km/h.
- Maps:** Gisborne District Council Speed Restriction zones:
- Gisborne city, Makaraka, Makorori, Manutuke, Matawai, Muriwai, Okitu, Pātūtahi, Ruatōria, Te Karaka, Tikitiki, Tokomaru Bay, Tolaga Bay, Wainui.
- Previous Legal Instrument:** Gisborne District Council Speed Limits Bylaw 2005.
- Schedule 2: Roads that have a Speed Limit of 70 km/h.
- Roads shown in blue on the following named maps are declared to have a speed limit of 70 km/h.
- Maps:** Gisborne District Council Speed Restriction Zones:
- Gisborne city, Hicks Bay, Makaraka, Okitu, Ormond, Te Araroa, Te Puia Springs, Tokomaru Bay, Tolaga Bay, Wainui, Whatatutu.

- Schedule 3: Roads that have a Speed Limit of 80 km/h
Roads shown in purple on the following maps are declared to have a speed limit of 80km/h.
Maps: Gisborne District Council Speed Restriction Zones:
Lavenham, Manutuke.
- Schedule 4: Rural Areas – Roads that have a Speed Limit of 100 km/h
All public roads within Gisborne district not otherwise referenced, or marked in green on maps named in Schedules 1, 2 and 3, are designated Rural Areas that have a speed limit of 100 km/h.
- Schedule 5: Roads that have a Variable Speed Limit
Maps: Mangapapa School.
- Schedule 6: New additions to the Bylaw.

7. Offences

- 7.1 Every person commits an offence against this bylaw who operates a vehicle in excess of the bylaw speed limits set by this bylaw.

8. Date bylaw made

- 8.1 This bylaw was made by the Gisborne District Council at a meeting of the Council on 12 December 2013.

The common seal of the Gisborne District Council is attached in the presence of:



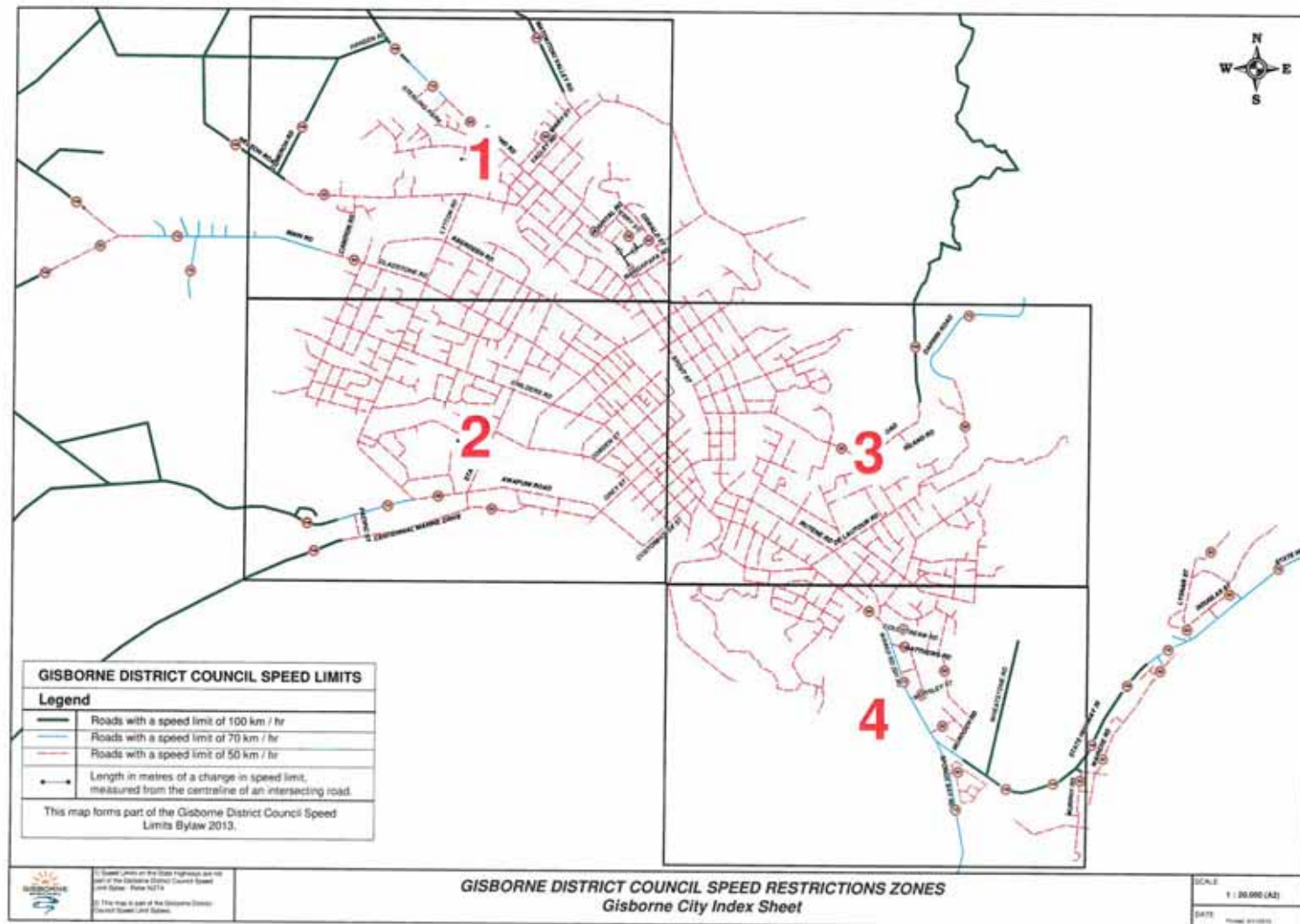
Mayor



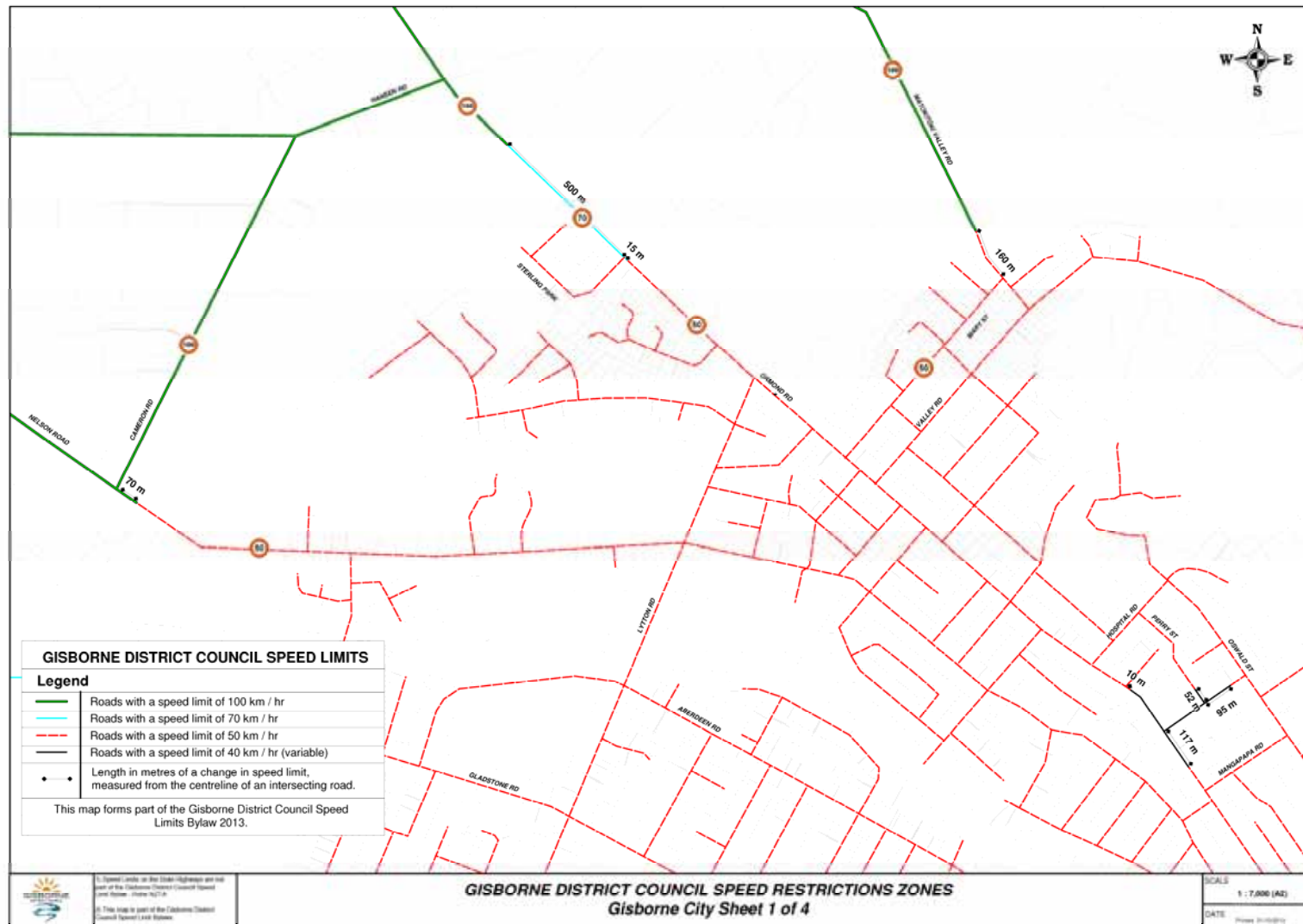
Chief Executive

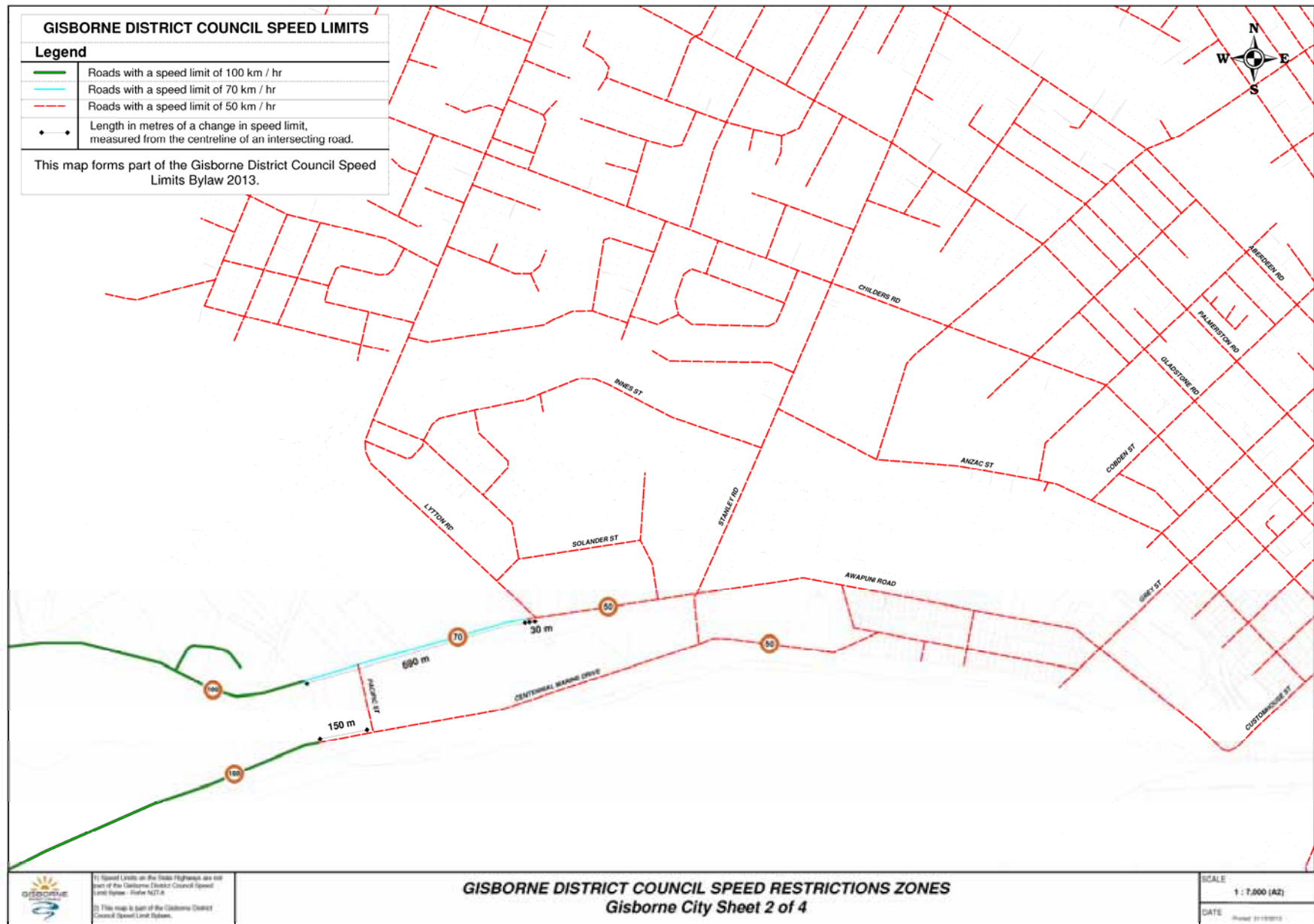
9. Speed restriction zone maps

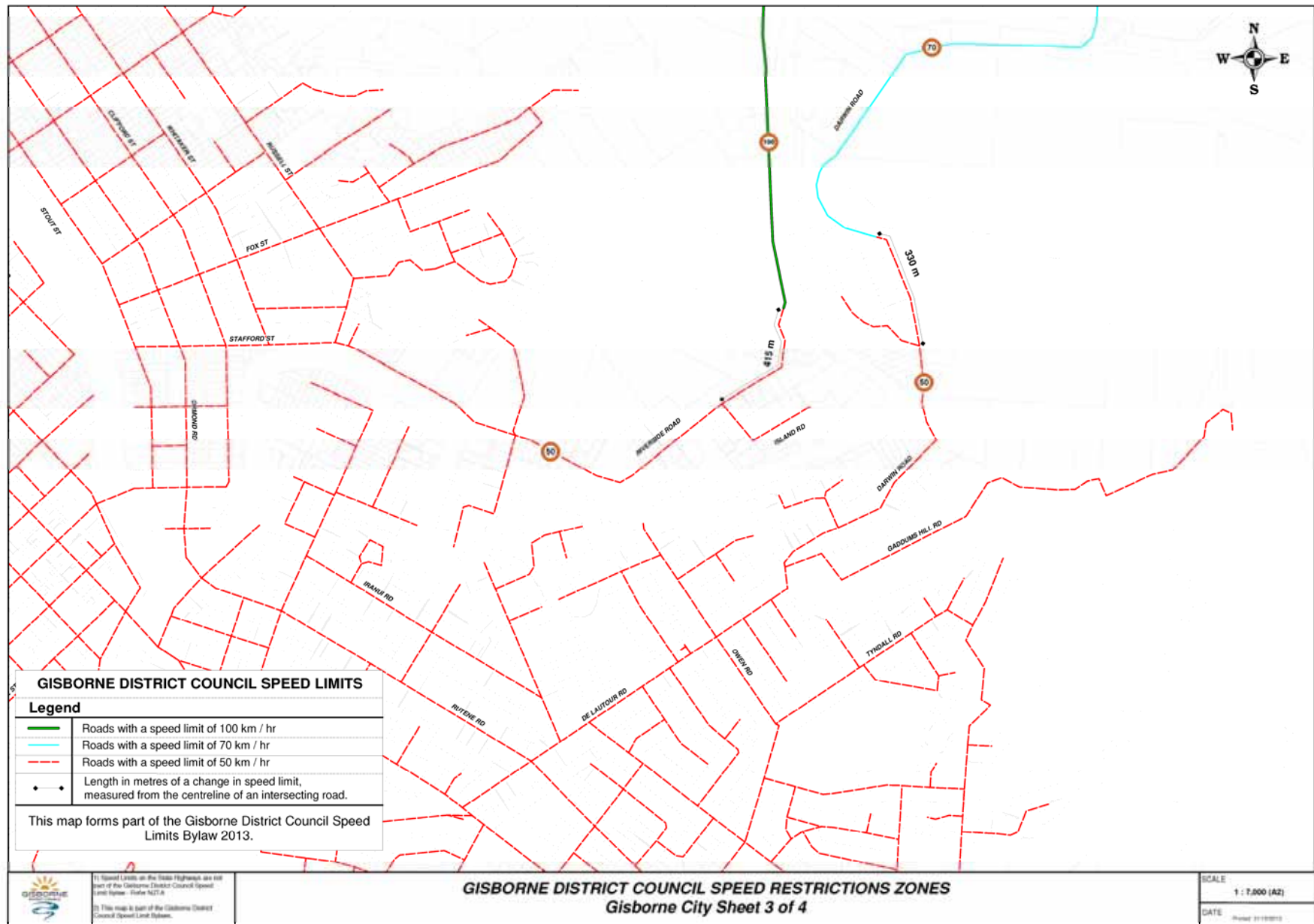
Gisborne City Index Sheet

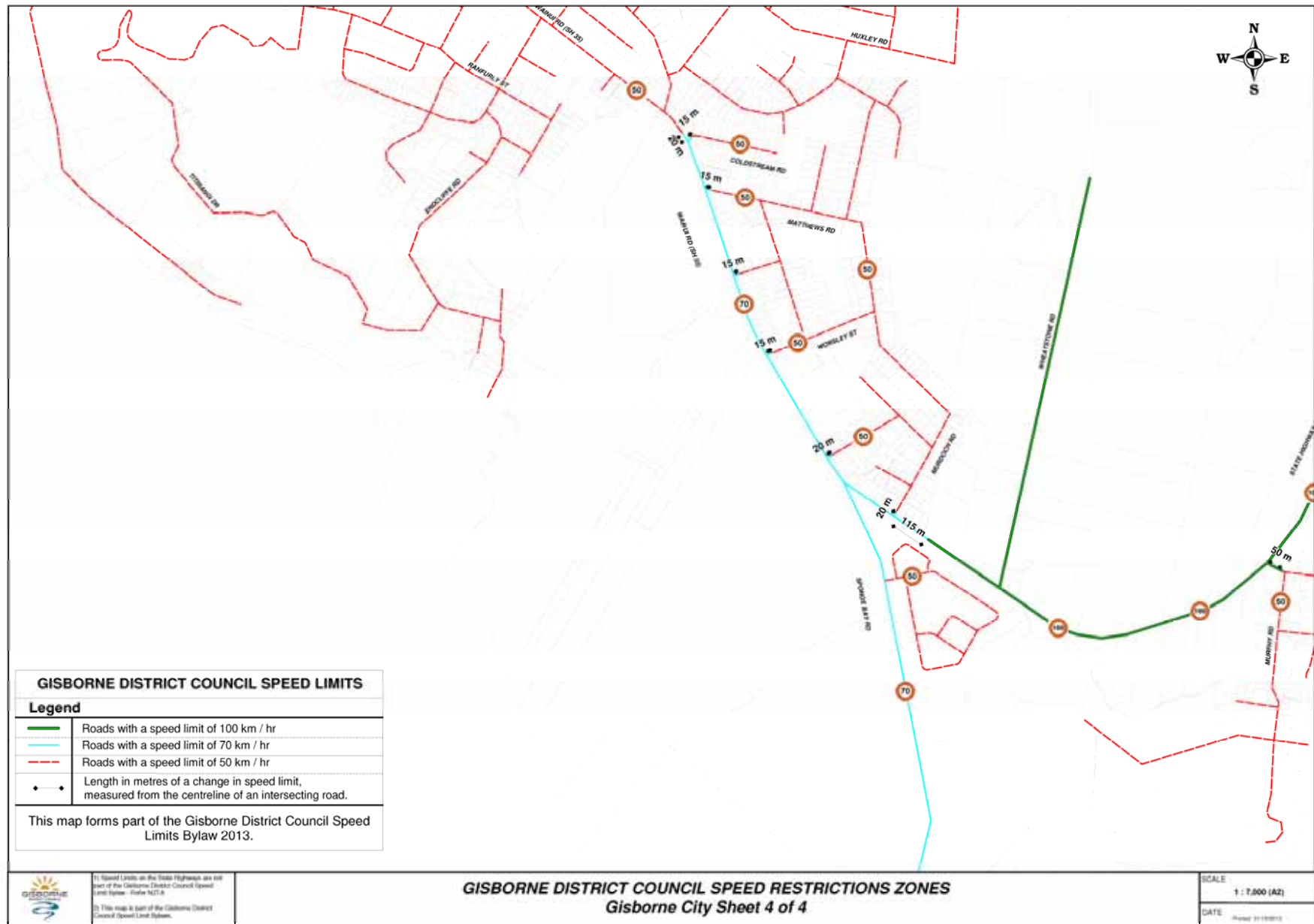


Gisborne City

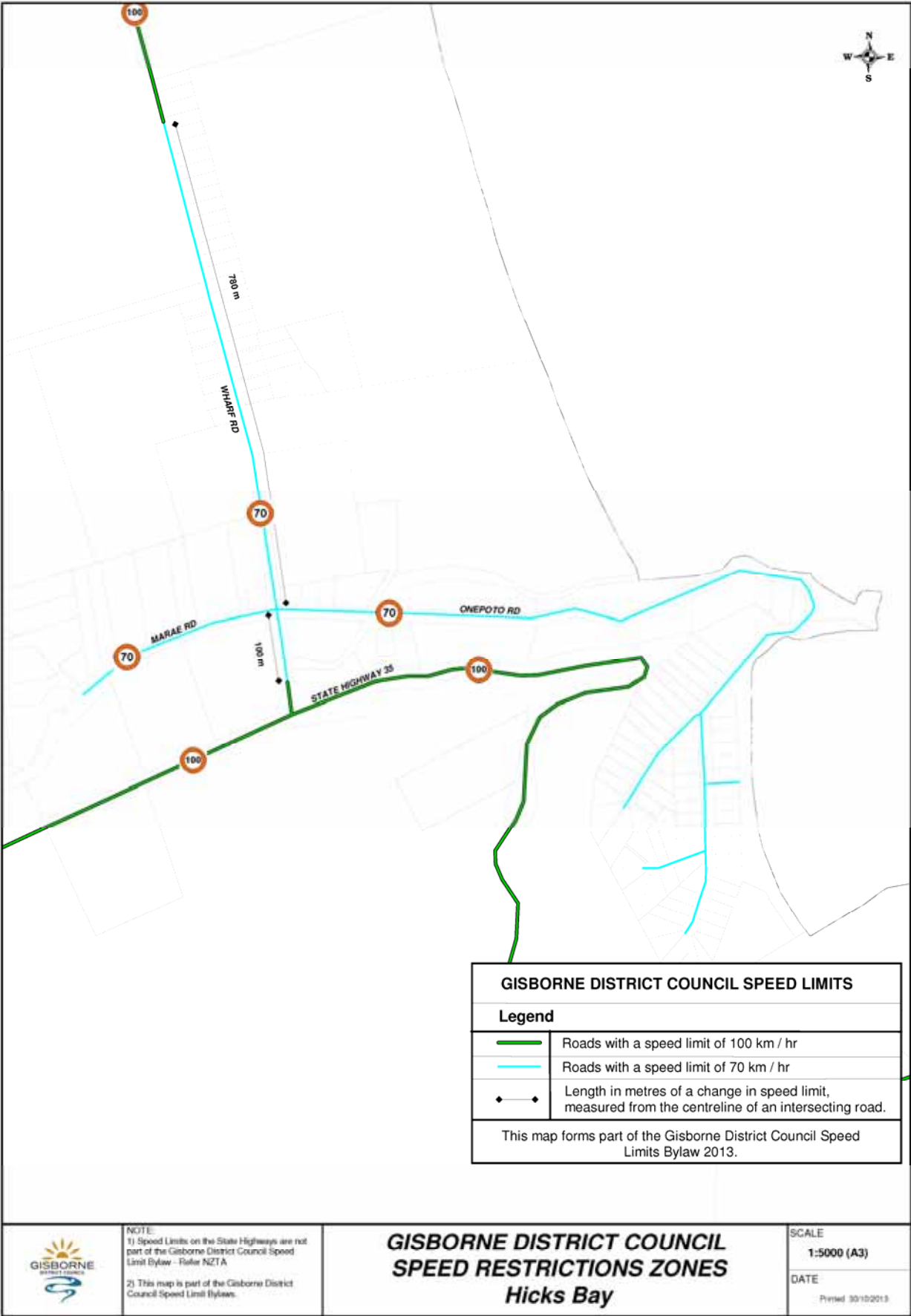




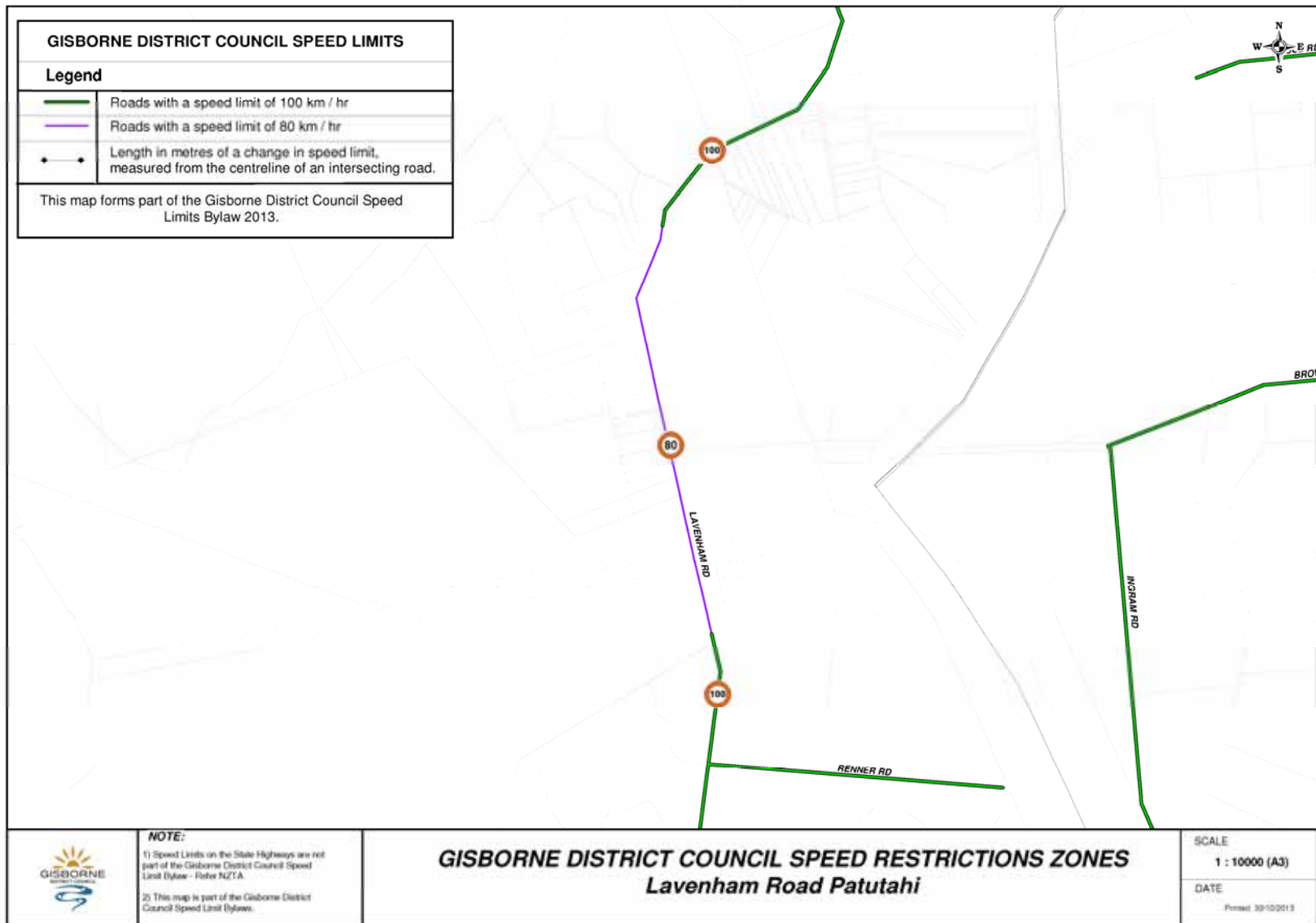




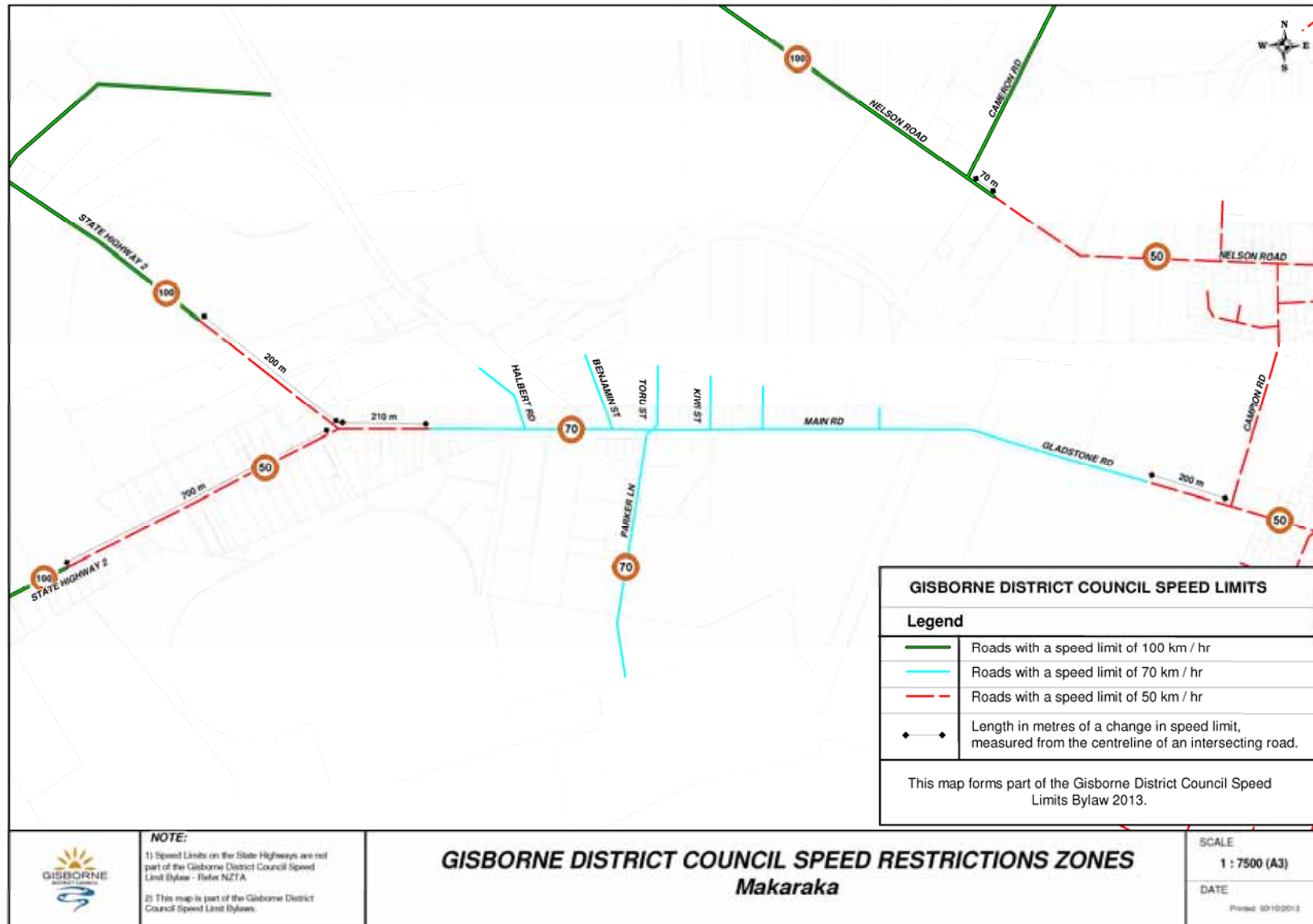
Hicks Bay



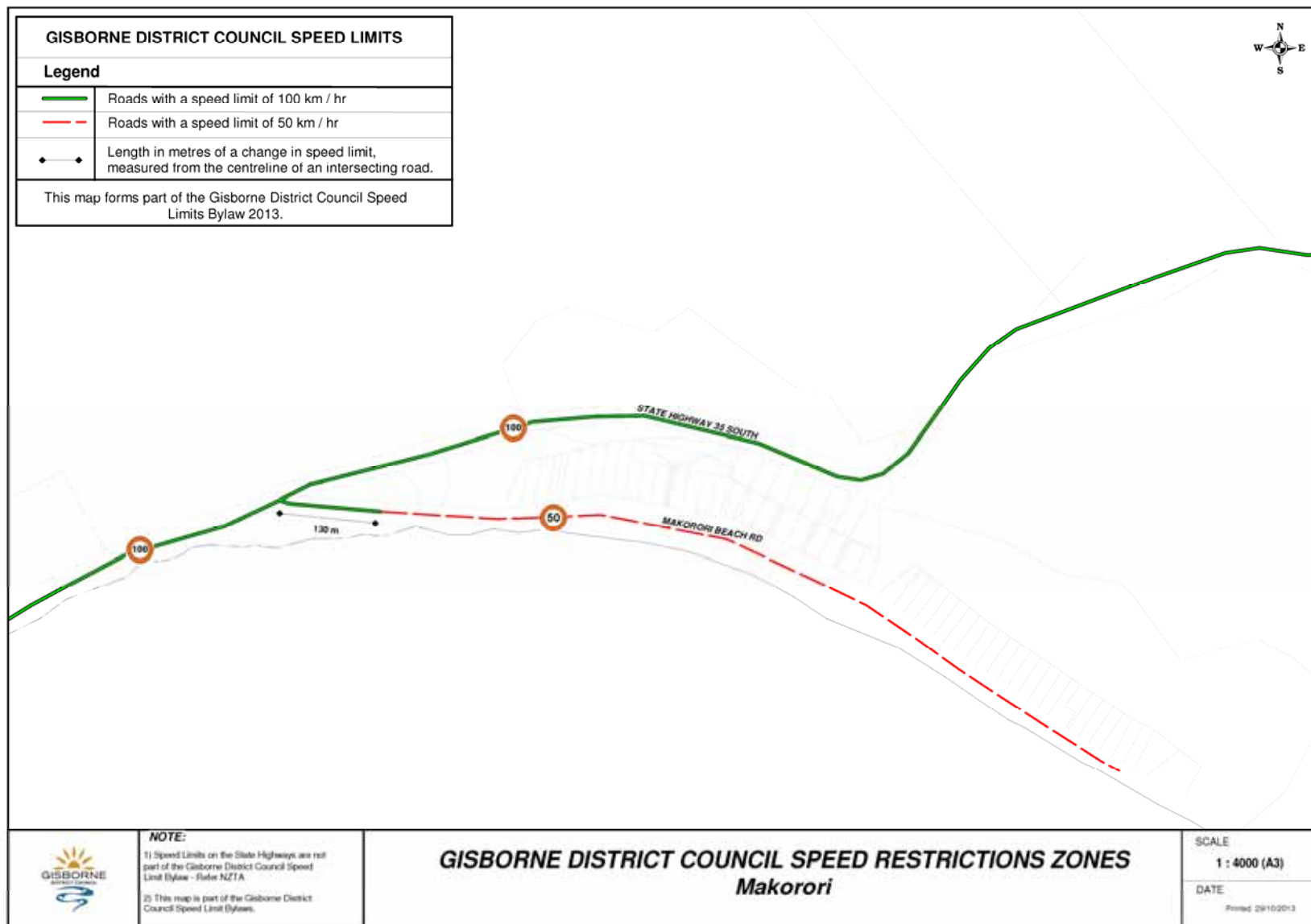
Lavenham Road - Patutahi



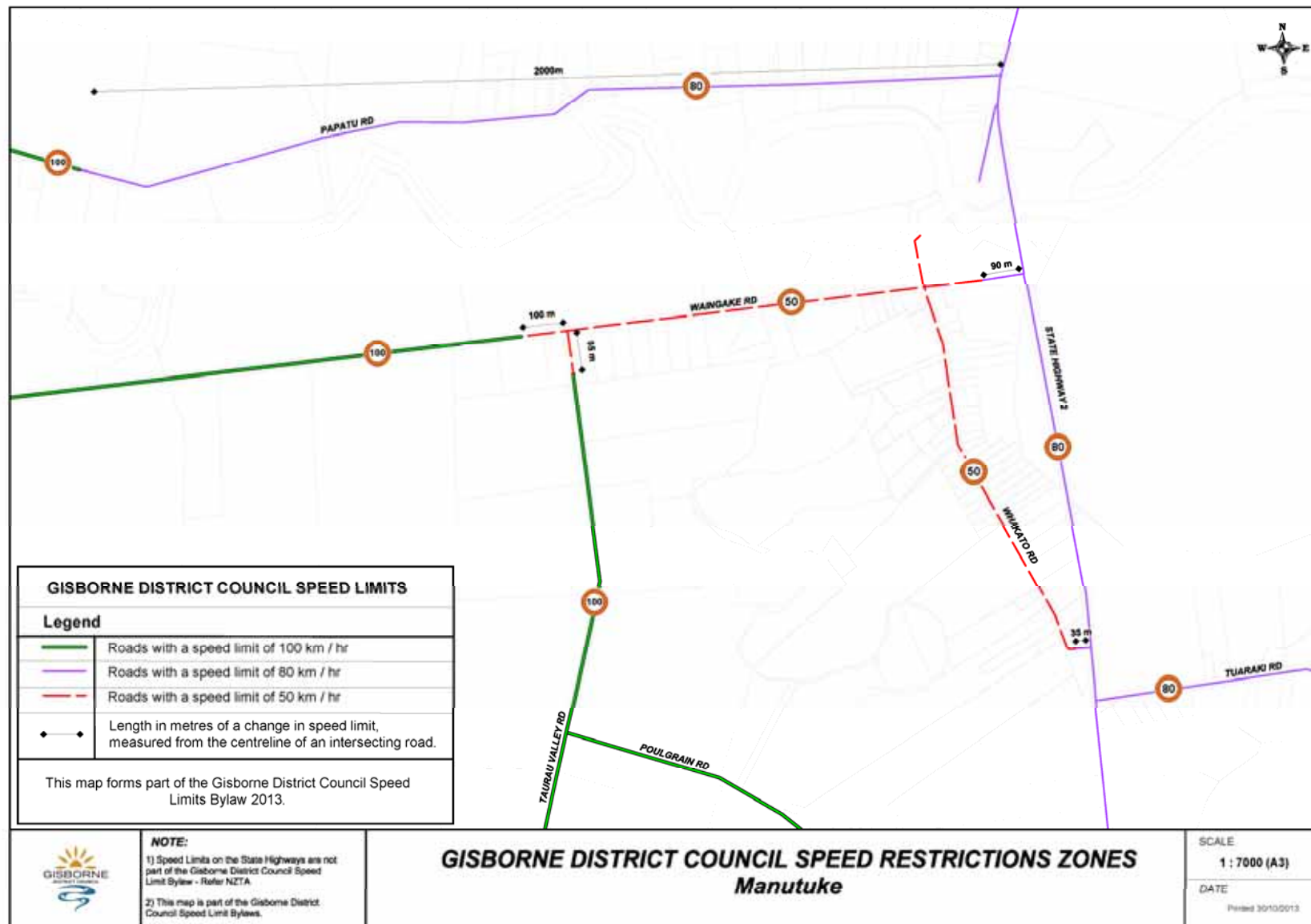
Makaraka



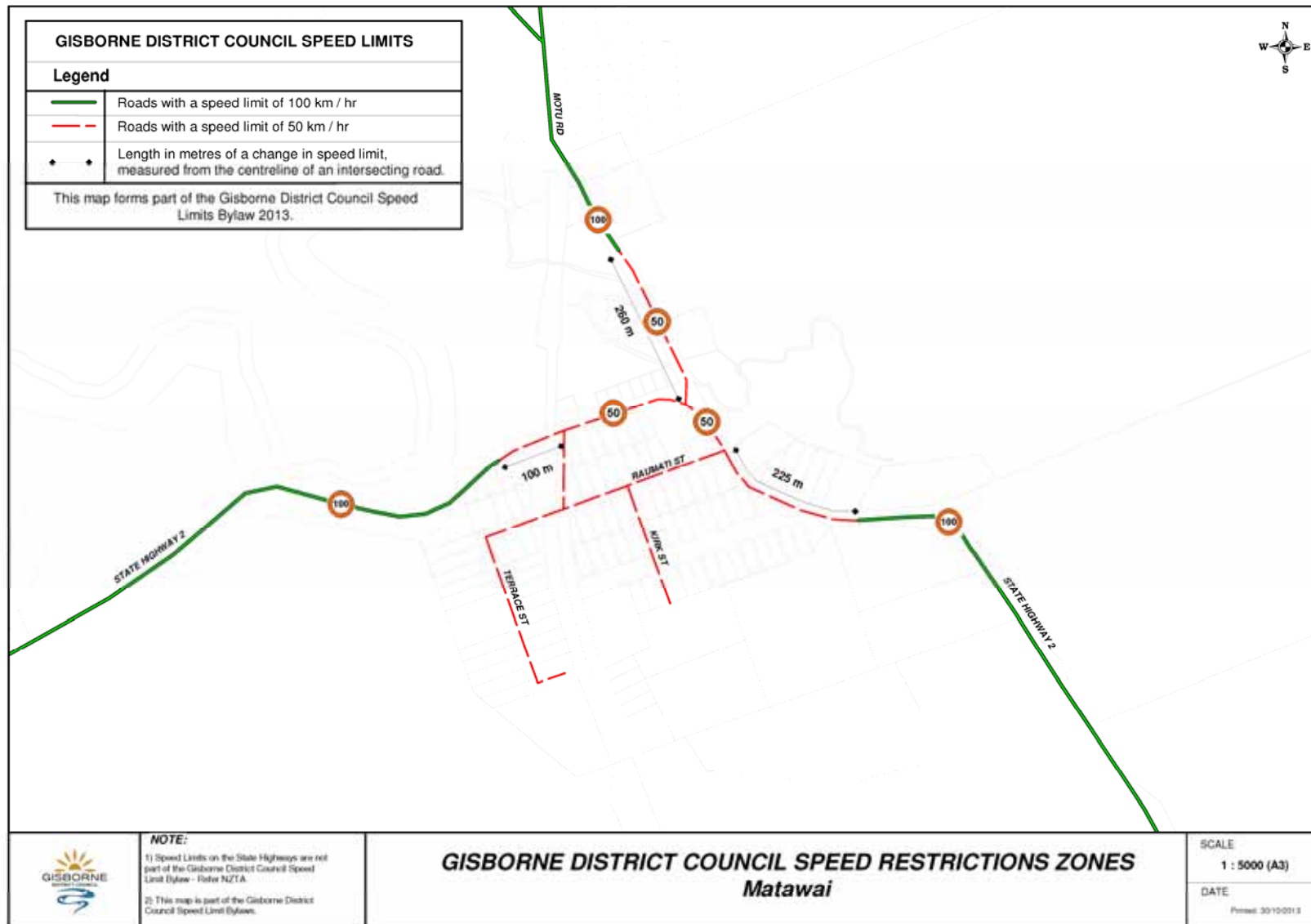
Makorori



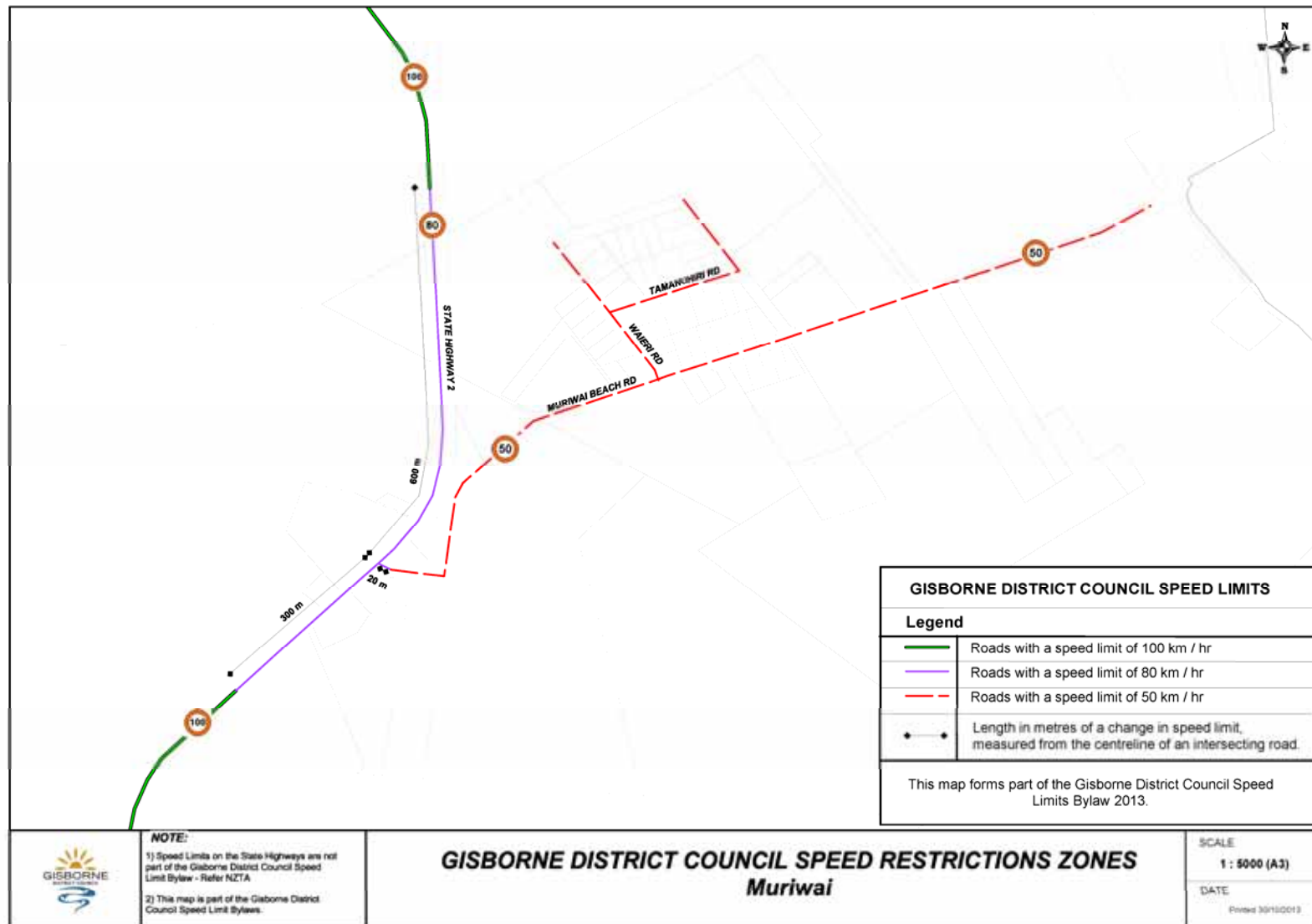
Manutuke

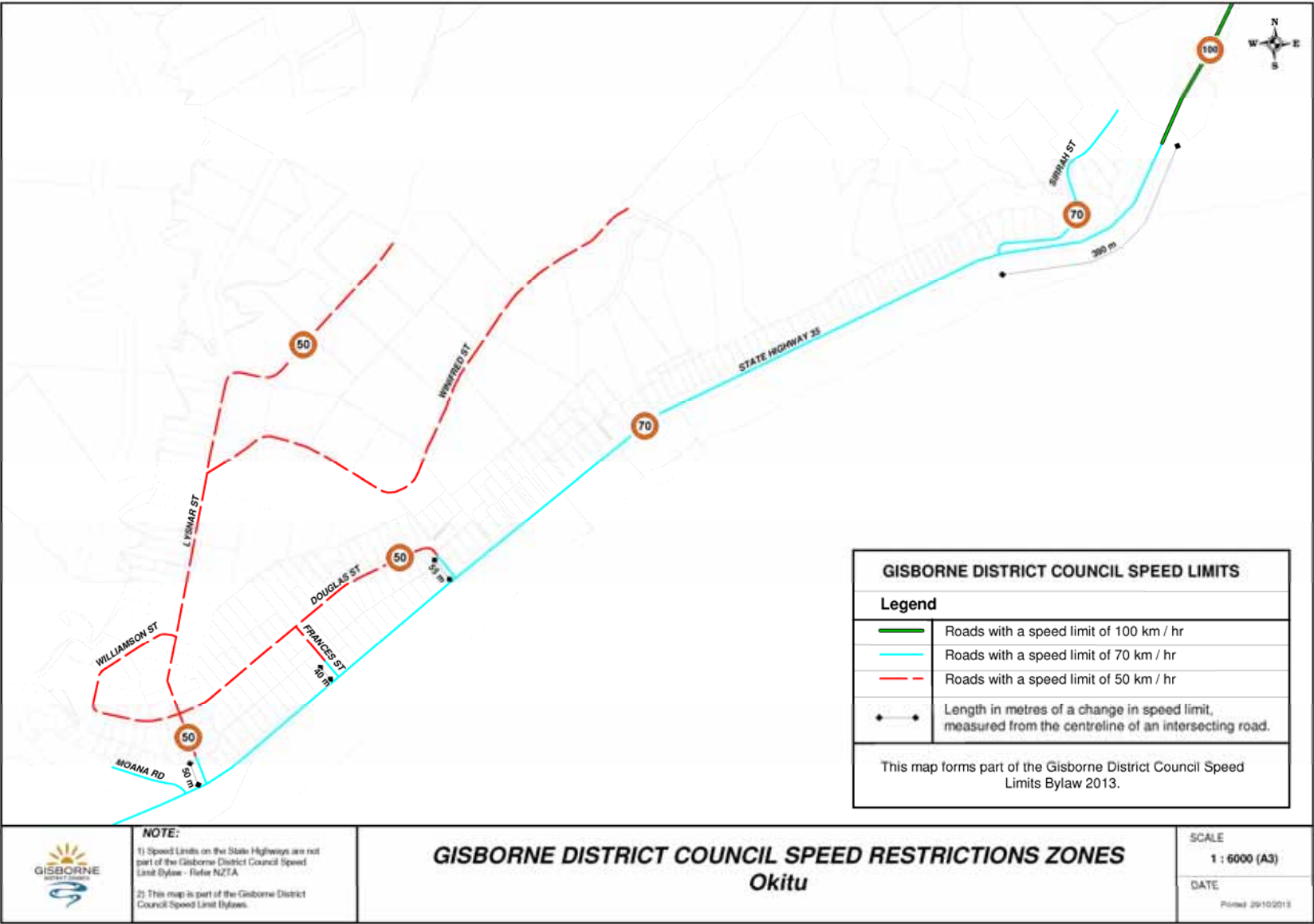


Matawai



Muriwai

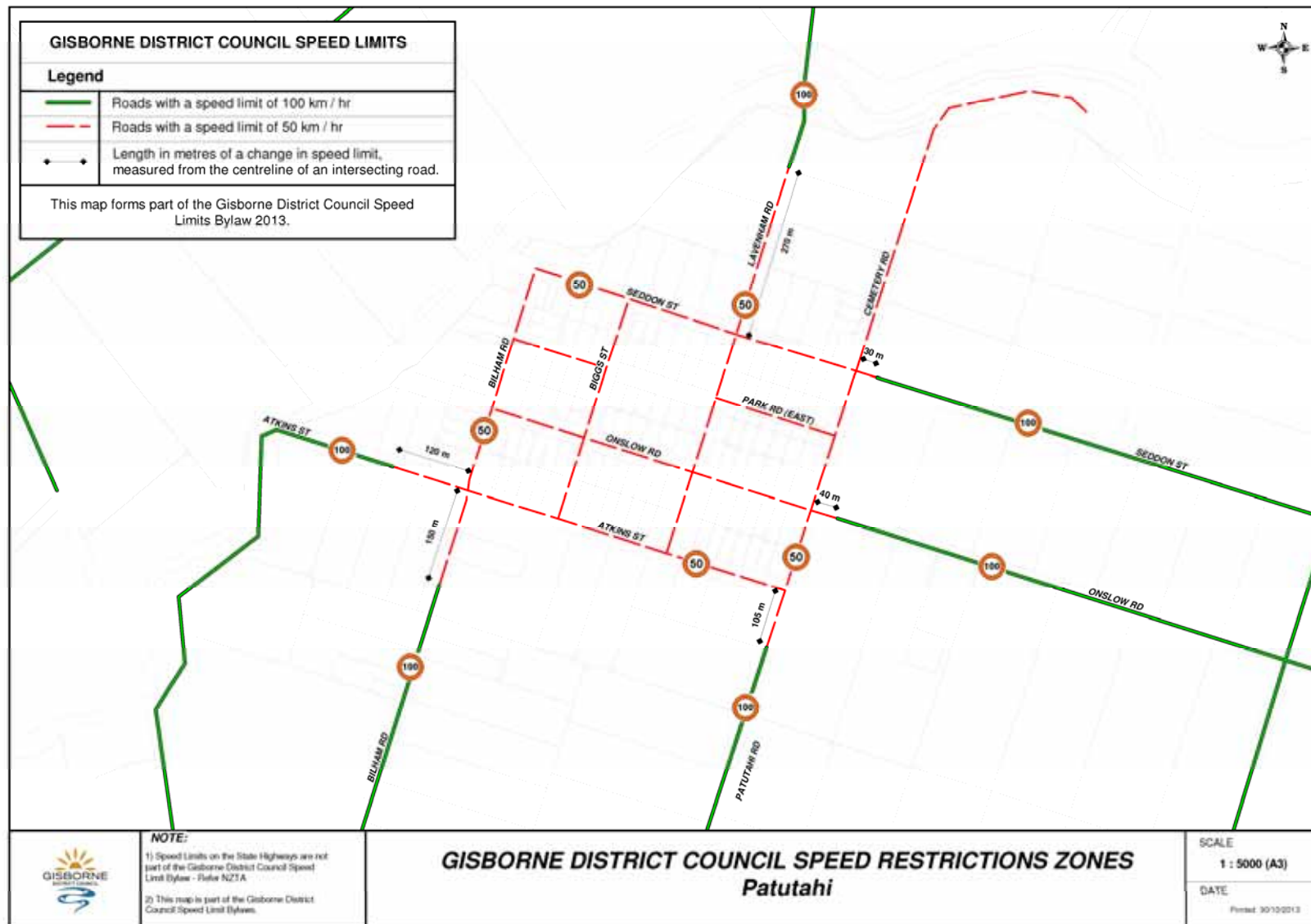




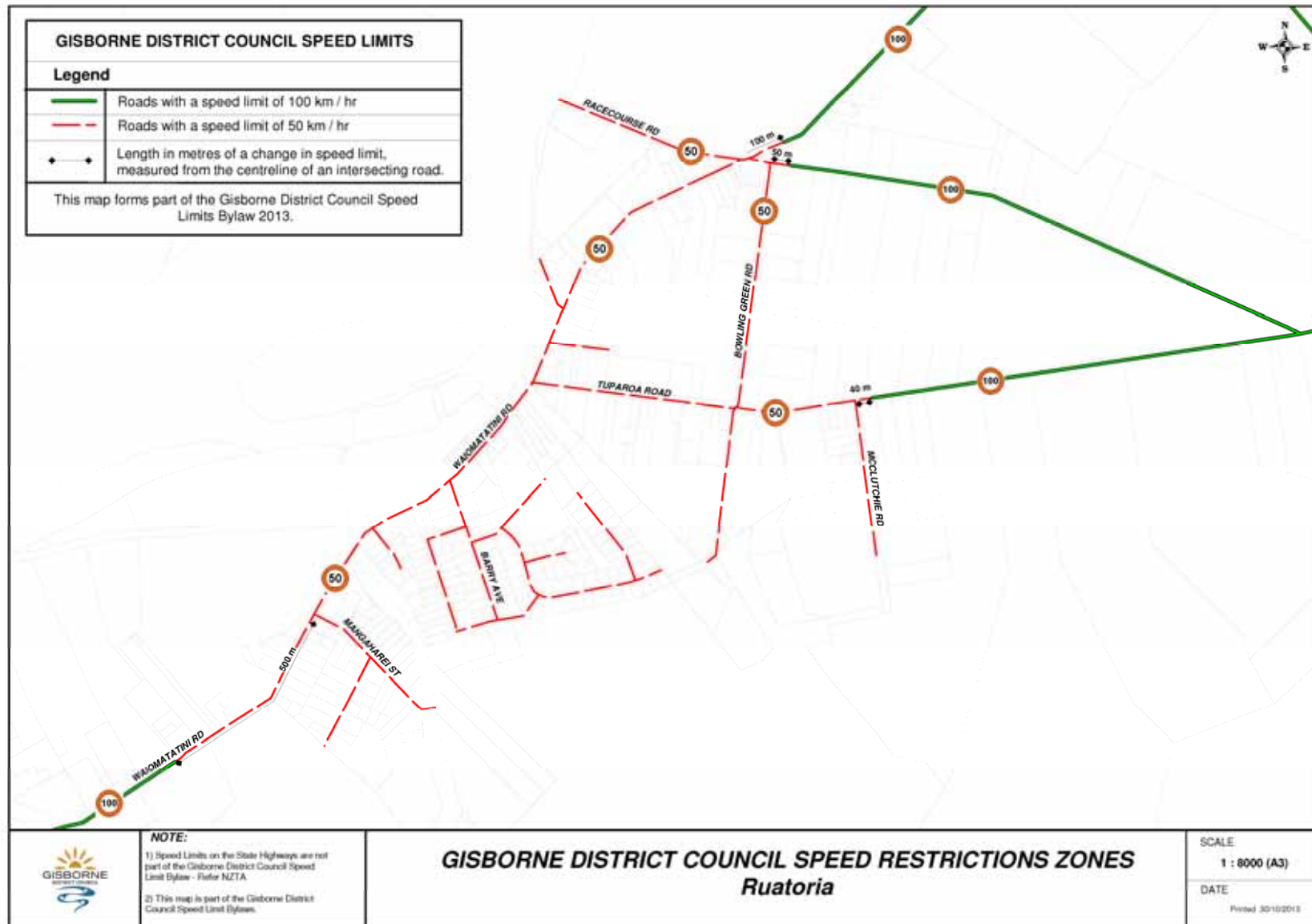
A447631



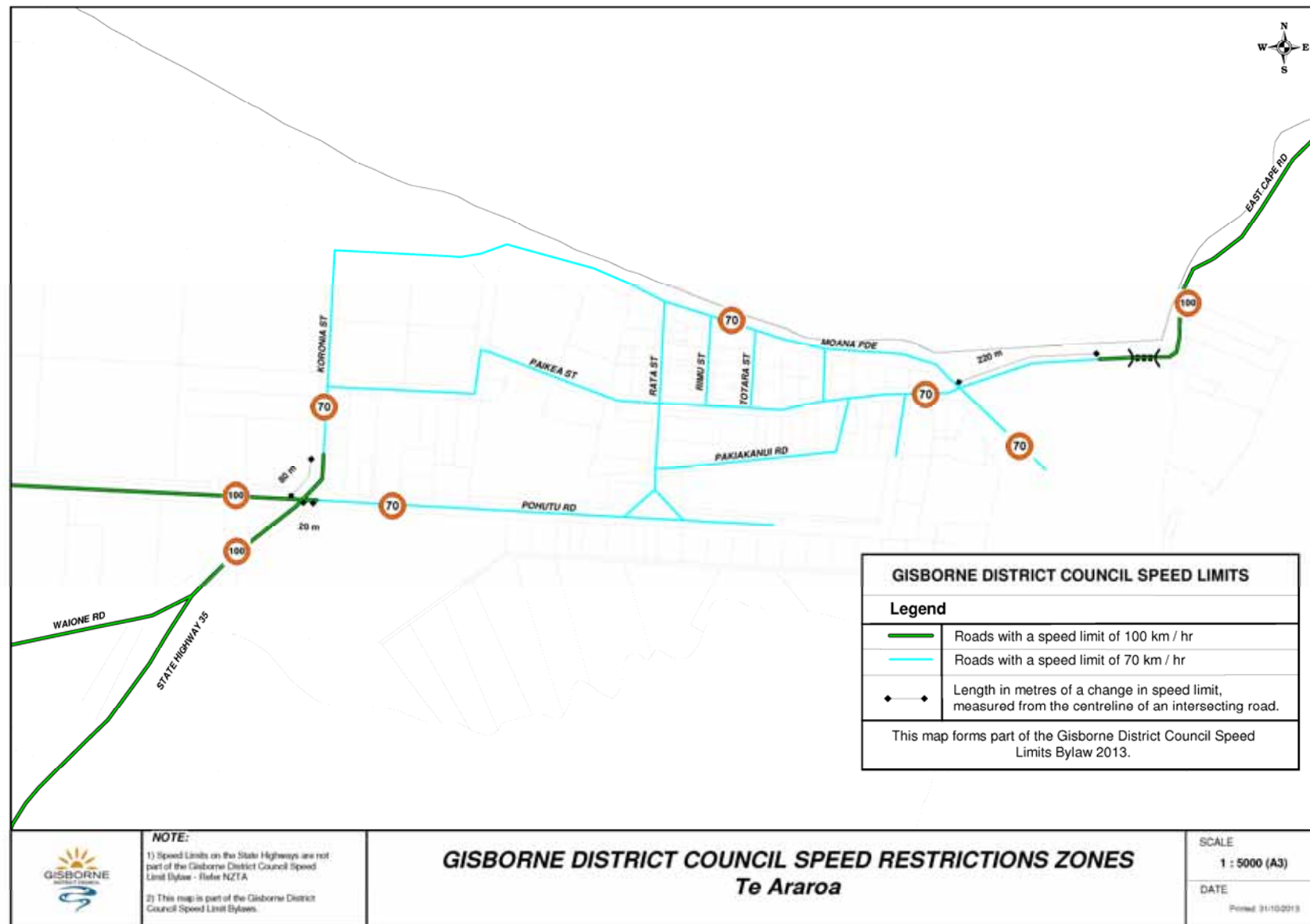
Patutahi



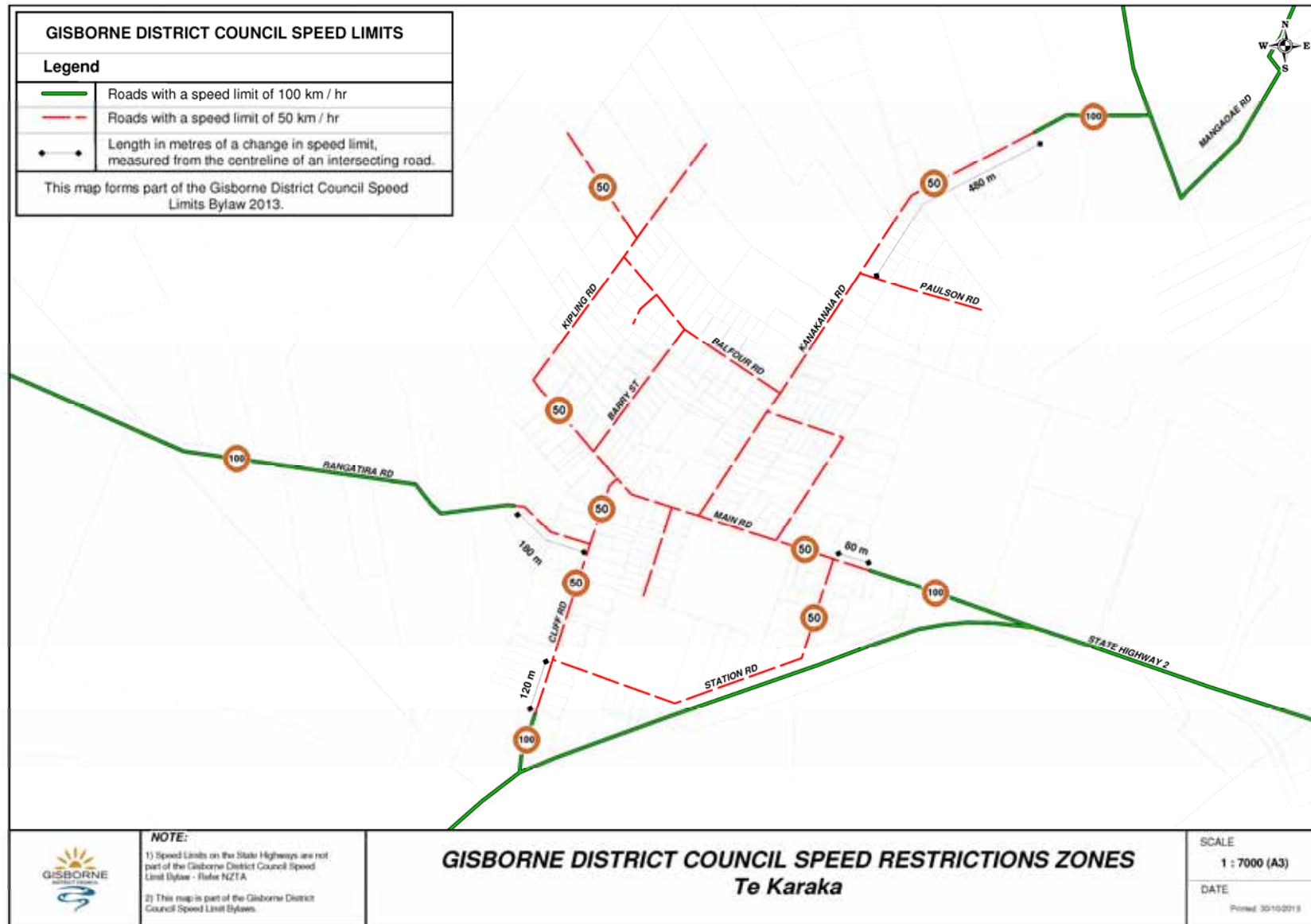
Ruatoria



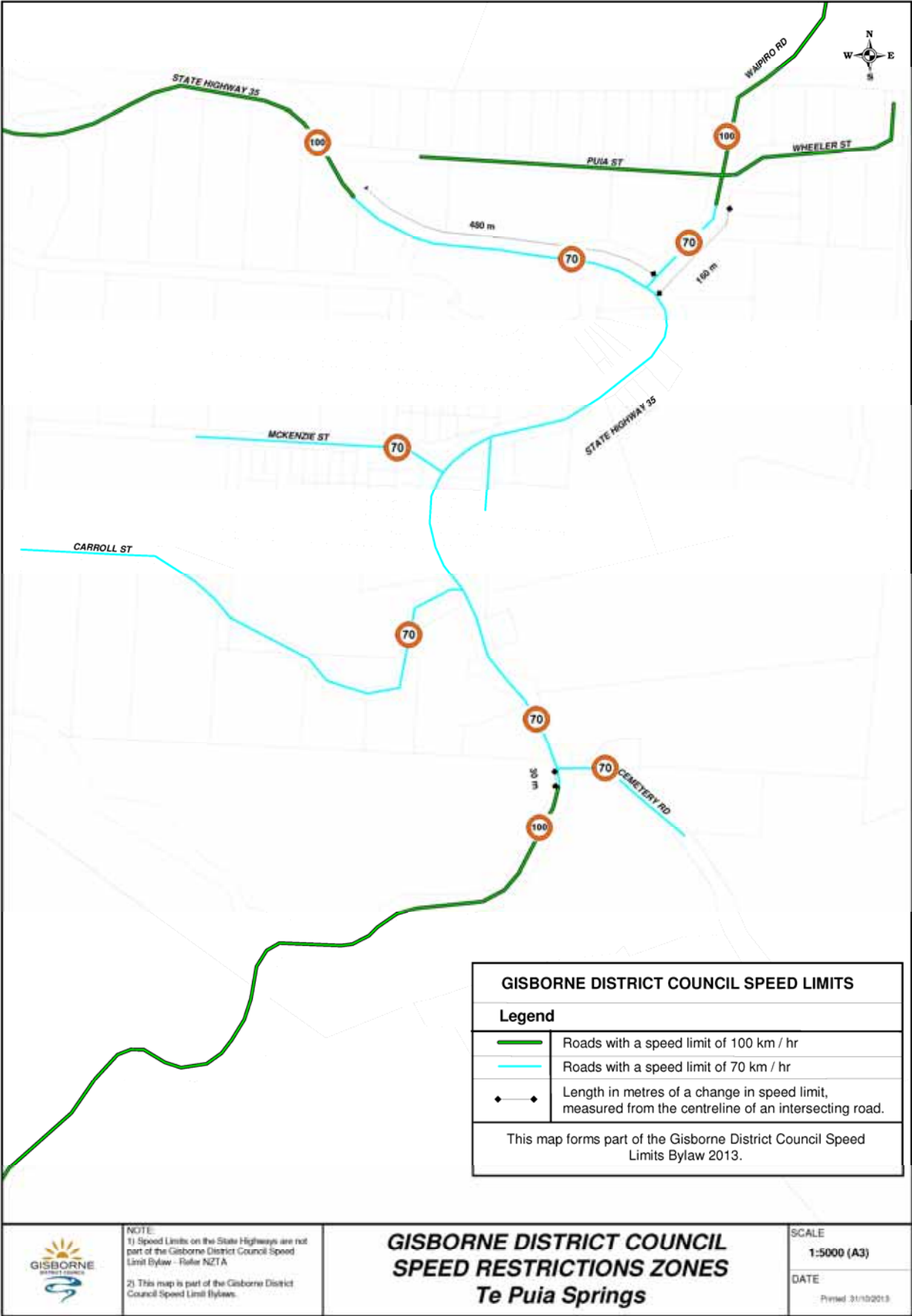
Te Araroa



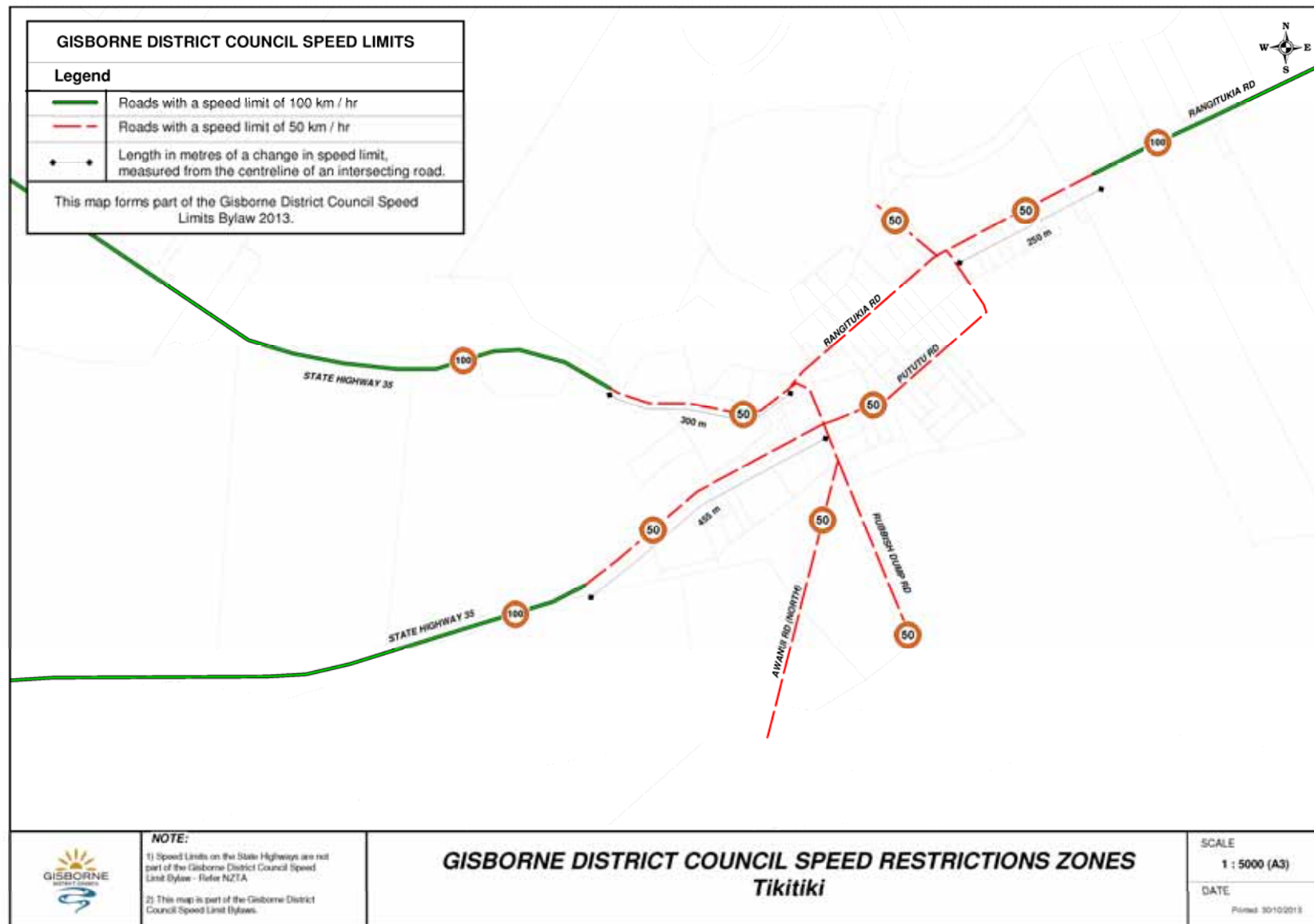
Te Karaka



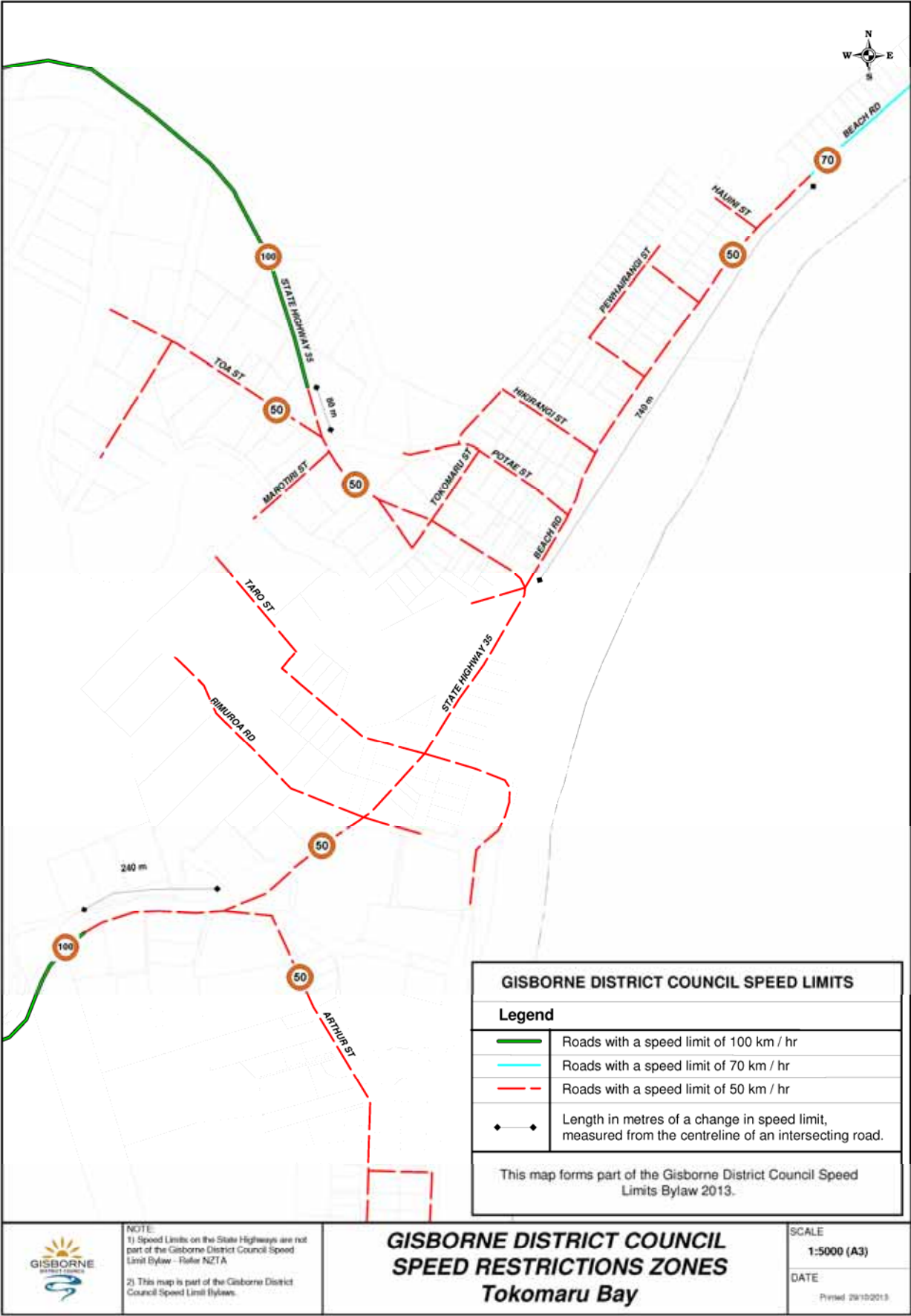
Te Puia Springs

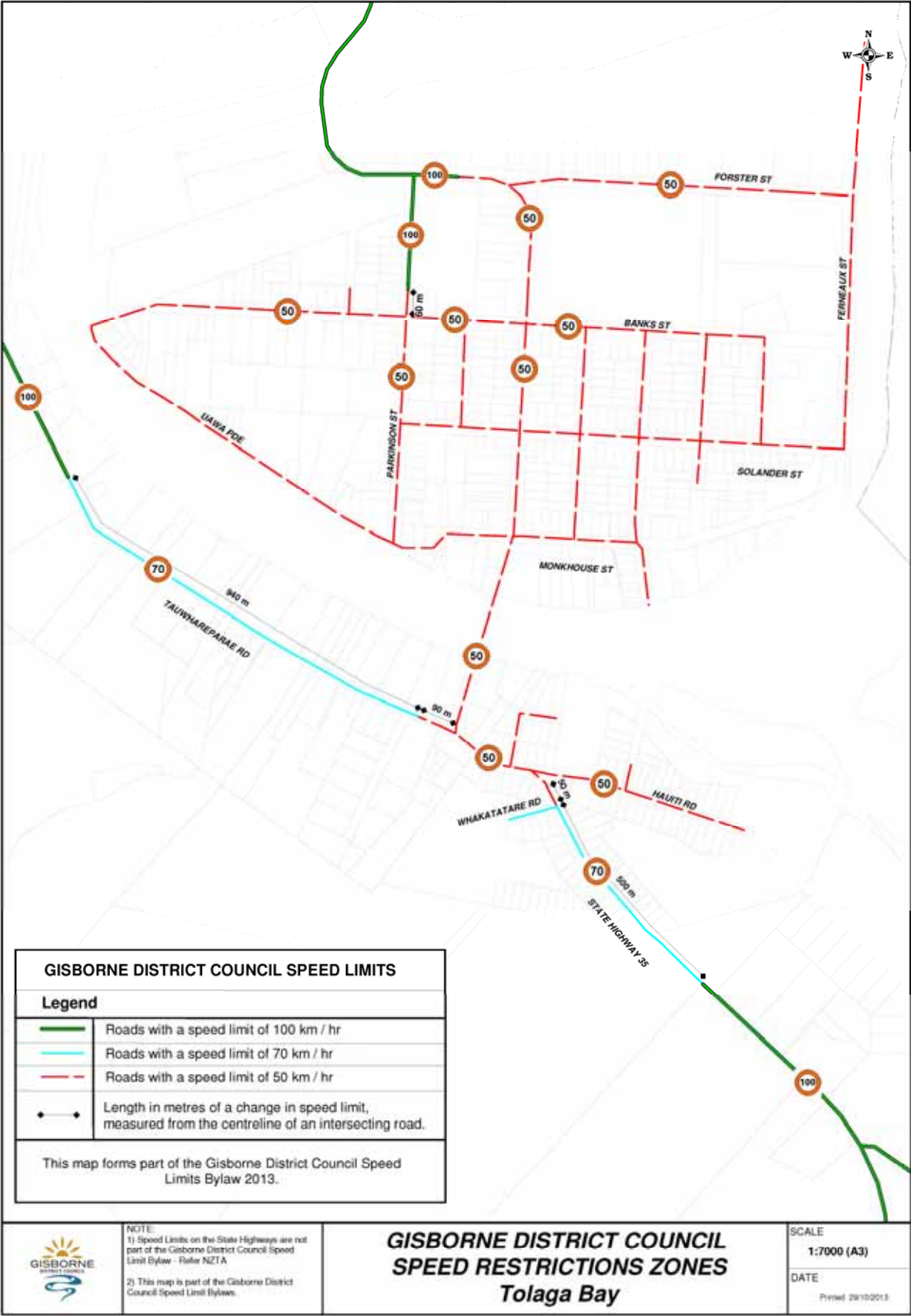


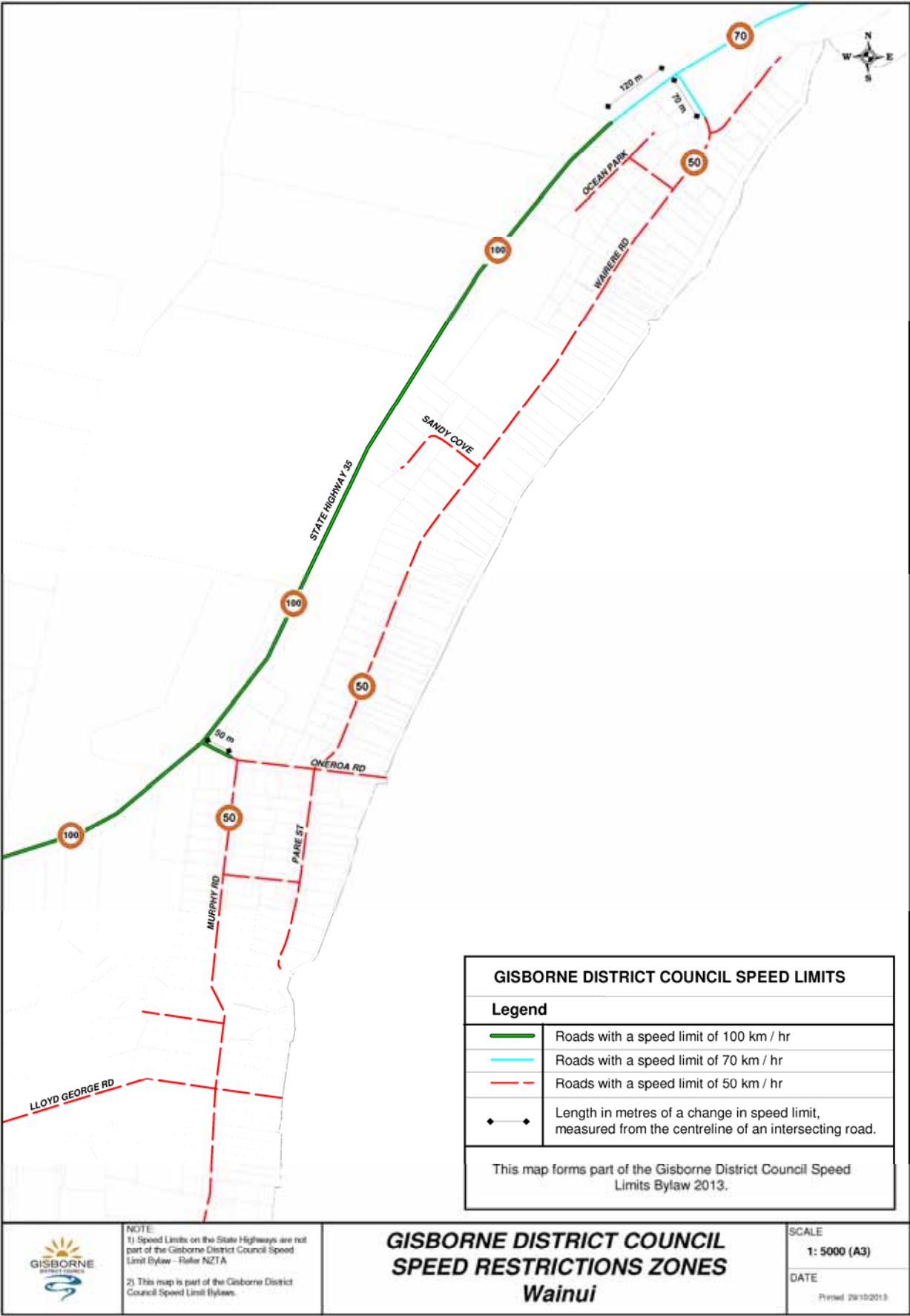
Tikitiki



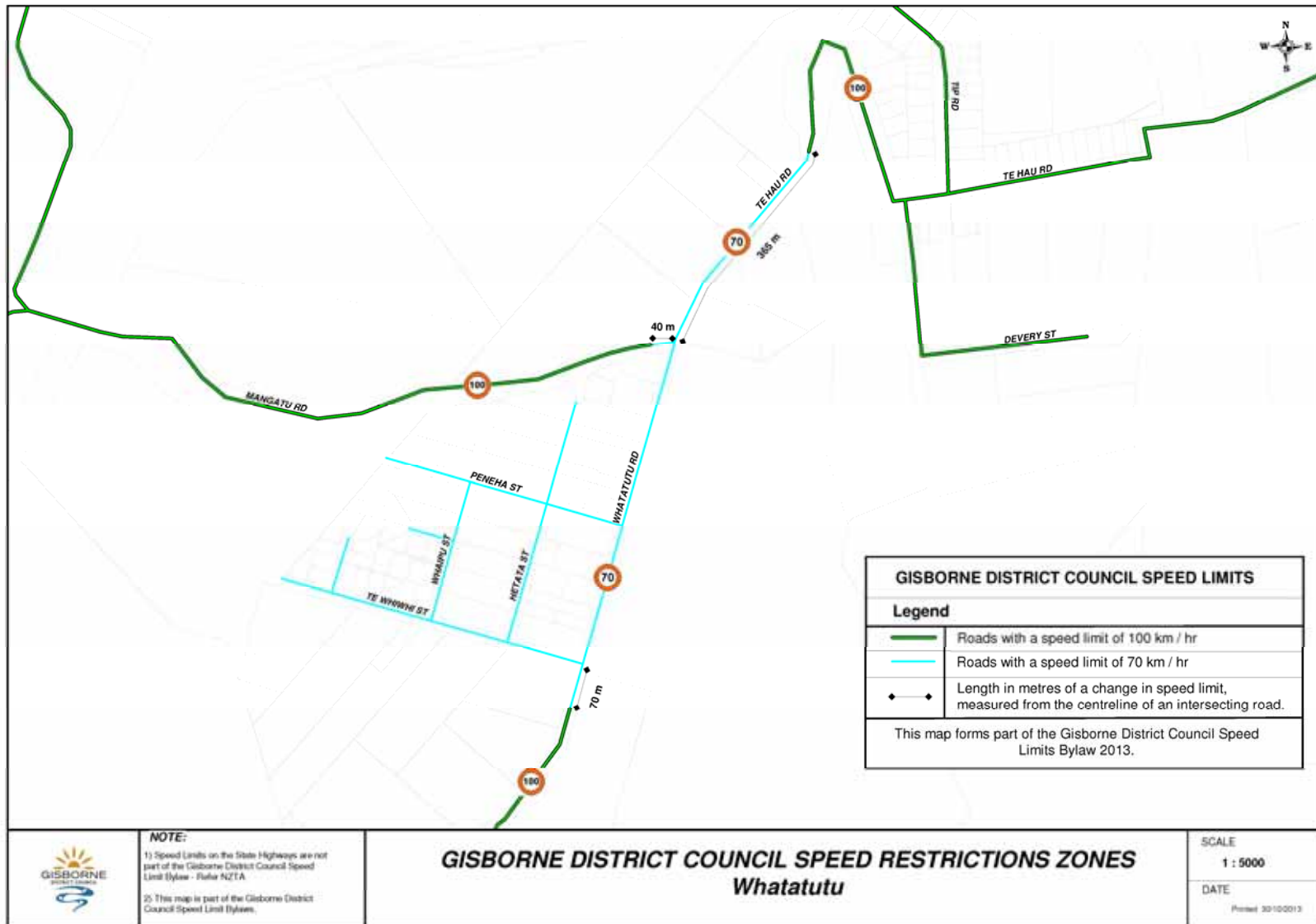
Tokomaru Bay







Whatatutu



Mangapapa School

