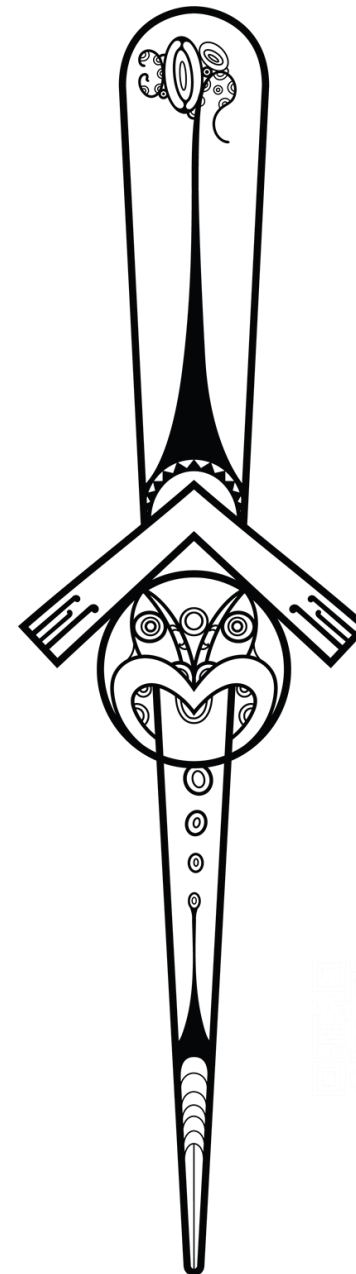




our road to recovery – Tairāwhiti

Weekly Report #6 – 22 May 2023



our week

Progress was made during our second collective impact hui, there are multiple realignments occurring following feedback from agencies and iwi.

The Recovery Coordination Centre (RCC) is embarking on initial stages alongside Ngai Tāmanuhiri to see how and where the RCC can support iwi recovery planning, and resourcing through investment and backbone co-ordination functions. We have agreed with Tāmanuhiri that the recovery office will work with them on their recovery plan. Initial meetings are taking place in the coming weeks.

The RCC is embarking on a project alongside the Minister's Office and collective agencies to establish an inbound whānau connection campaign. This will be established in two locations initially to complete scope, scale and size analysis, then will scale up where demand presents.

Enhancements to the office structure to ensure a local leadership focus is being proposed with CEG (Page 8 and 9).

Weekly Progress/Opportunities

Commercial Silt and Debris

- PWC are developing an application process, eligibility criteria and an information validation process, for removal of silt and debris for the distribution of funding, in alignment with Hawkes Bay Region Council.
- Process expected to go live at the end of May.

Red and yellow stickered homes

- Significant information has been gained through contacting red and yellow stickered whānau, further detail included in page 5.

Managed Retreat

- Ongoing discussions with DPMC – including work on Riskscape data tool and whānau engagement.
- DPMC to clarify policy and fund within the next 2 weeks and collectively working on final decisions on categorization. Work is required by Council on category 2 stickered houses and a resourcing support will be requested from DPMC.

Te Tumu Paeroa (TTP)

- Met to discuss opportunities to partner on recovery for whenua Māori. Three main actions (1) connect to build a collective locally with TPK, MPI, TTP and Recovery; (2) work on combining data; (3) continue discussions to remain connected across recovery.

Whenua Māori

- Further work required between TPK and Council to determine process around whenua Māori. Engaged with national office and DIA to ensure alignment with current local activities and the collective impact approach.

Risks/Issues

Central govt funding drops

- We have received 4 funding drops in the last week (commercial, whenua Māori, MFE, Red Cross and MPI). Need clarification around how this aligns with the budget bid.
- It is resource intensive to administer the funds in such short timeframe to meet central government funding criteria alongside the needs of our community.
- This has the potential to create more tensions at a regional level. There is a continued desire to ensure and prioritise a locally led approach to recovery which is supported by central government.

Regional governance.

- Operational relationships continue utilising the CI approach to ensure continued momentum and progress is achieved for our communities.
- Recovery Office is developing local model that will assist and support regional decision making.

Managed Retreat

- Council has been contacted re the buying of red stickered houses. Information being collected and collated.

Public Services

- Concerns raised in relation to public services continuing in a siloed approach creating frustration and confusion around who is doing what and where which is working against the CI approach.
- We hope to see a shift in this as we progress through CI.

Natural Environment

- Vacancy for natural environment lead. Council has a short term option but have put out a request to agencies and iwi to identify someone to fill this role.

our fortnightly summary

Local Roads

Date	Roads closed to heavy vehicles	Bridges closed	Local roads closed	Roads opened	Notes
1 May 2023	11	20	21	0	\$17.2M spent on repairs
7 May 2023	12	17	14	7	\$19.0M spent on repairs
14 May 2023	13	17	14	0	Next \$ update at May Month End Close
21 May 2023	12	17	14	0	

Housing

Date	Assessments completed	Red stickers	Yellow stickers	Stickers removed	Imminent risk of landslide
1 May 2023	526	27	202	0	15
7 May 2023	528	27	203	0	14
14 May 2023	530	28	202	1	14
21 May 2023	530	27	202	1	14

Water

Date	Update
1 May 2023	Gisborne remains at alert level 3 since the week of 17 April 2023.
14 May 2023	Gisborne has moved to alert level 1 as of 9 May 2023

Silt Removal

Date	Houses on the list*	Completed	In progress	Outstanding	Money Spent	Money Accrued
1 May 2023	126	87	6	33	not recorded retrospectively	
7 May 2023	118	93	5	20	\$638K	\$38K
21 May 2023	119	94	5	20	No additional spend, pending invoicing	

our fortnightly summary

Job seeker Support

Date	Main benefit recipients <i>(increased by)</i>	Job seekers support - work ready grants <i>(increased by)</i>	Job seekers support - work ready recipients <i>(increased by)</i>	Job seeker support (work ready cancels into work)
24 April 2023	171	42	93	21
01 May 2023	171	24	90	21

Mayoral Relief Fund and Disaster Relief Fund

Date	Received	Pending	Processed	Declined	Assessed	Money available	Money allocated
01 May 2023	384	194	60	28	102	\$3.4M	\$2.12M
07 May 2023	390	174	38	28	150	\$3.4m	\$2.42M

Economic Environment Summary

Date	Applications received	Applications Processed	Applications Approved	Money Distributed	Money Requested	Estimated Loss	Additional Funding to 100% req
24 April 2023	877	810	661	\$6.37M	-	-	\$4.72M
7 May 2023	877	877	729	\$7.18M	\$19.91M	\$55.1M	
11 May 2023	877	877	724	\$16.2M	\$19.89M	\$55.1M	NA

Applications closed April 16 2023

social environment



The social environment requirements have been re-evaluated, and discussions are in progress with Ronald Nepe to explore Manaaki Tairāwhiti taking on the Social Environment Co-ordination Lead. There is a lot of work to be done to define the scope with a range of complexities, including Public Service silos.

Agencies have been engaging with communities throughout the region and working collectively to meet their needs:

- Ministry of Primary to Industry (MPI) in conjunction with the Rural Support Trust have been hosting events to connect and share information around resources to farmers.
- Trust Tairāwhiti have attended hui in communities throughout the East Coast to keep their groups updated about funding opportunities.
- Te Puni Kokiri undertaking whenua Māori wananga to explore opportunities, barriers for utilising or developing whenua Māori recovery and resilience support.
- Ministry of Education, and Te Whatu Ora have been working together to discuss psychosocial support for staff and students.
- MSD, TPK, DIA and Red Cross have developed a funding panel to support applications from marae in Tairāwhiti.

MPI \$45.55M has been made available to all parts of the primary industries to boost health, safety and protect animal welfare, support the wellbeing of rural communities and to assist with the clean up of woody debris. MPI will distribute the funding to industry partners, community, iwi and other providers.

TEMPORARY ACCOMMODATION

Tairāwhiti Region	
Registered:	190
Actively Managed:	26
Future Need:	17
In TAS Supply:	36
Supply:	42

Toitu Tairāwhiti have requested collaborative data to understand the need for cabins in the area and are working with TAS. TAS continue to encourage those needing temporary accommodation now or in the future to register for the service. This will provide a demand picture when household insurance runs out or current living situations become untenable.

MBIE TAS have made a number of motorhomes available, which may be suitable now but may develop into a need for additional cabins into the future.

MSD continue to operate Emergency Task Force Green in the region. Funding has been secured to continue this work. They are also working with MBIE Regional Labour Market and Skills to develop a clear picture of the labour market and put in place appropriate supports.

“ Everyone has been really helpful, but its just the waiting now, and this is what is keeping us awake at night now, but it has been so lovely to see and speak to someone in person, we feel like we were forgotten”

WHANAU VOICE

Telephone contact of red and yellow stickered housing has continued.

182 ATTEMPTED CALLS **97** CALLS CONNECTED **5** KANOHI KI TE KANOHI

There is an identified need for increased networking to provide an effective service. In the last fortnight the focus has been on understanding and developing collective relationships with existing agencies and community groups and encouraging an inward / outward pathway for whānau needs to be met.

There is a growing keenness from whānau to have one point of contact and there has been an increase in kanohi ki te kanohi requests to work through the short and long term plans for whanau that the Recovery Case Coordinator is managing.

Future focus for the next fortnight is to transition into an inbound model. Work will commence alongside the Ministers Office and collective agencies to create a community connection hub for whanau to come and discuss kanohi ki te kanohi any concerns or needs they have as a result of the Cyclone. We will then work, based on consent, to ensure there is a pathway for the needs to be resolved, and if they can,t be, to provide certainty around what work is happening towards reaching a resolution.

Themes

- Insurance communications although reduced slightly. Insurance companies are still not processing claims quickly, or providing outcomes to whānau which is impacting anxiety and heightened panic in the following areas.
- Temporary Accommodation. With the delay in Insurance processing and significant delays in communication, money initially provided to those insured is due to run out soon, with no time frames of when whanau can move back into their property. In these cases, we have connected with Temporary Accommodation Services (TAS) who visited Tairāwhiti this week, to discuss complexities and assist in future planning for whānau at risk of long-term displacement from homes.
- Heightened anxiety focused on the following;
 - a. The future of their land use & silt removal funding access
 - b. Money running out from Insurance for temporary accommodation.
 - c. Disconnection from loved ones and whenua
 - d. Disconnecting from education and kura
 - e. Managed retreat

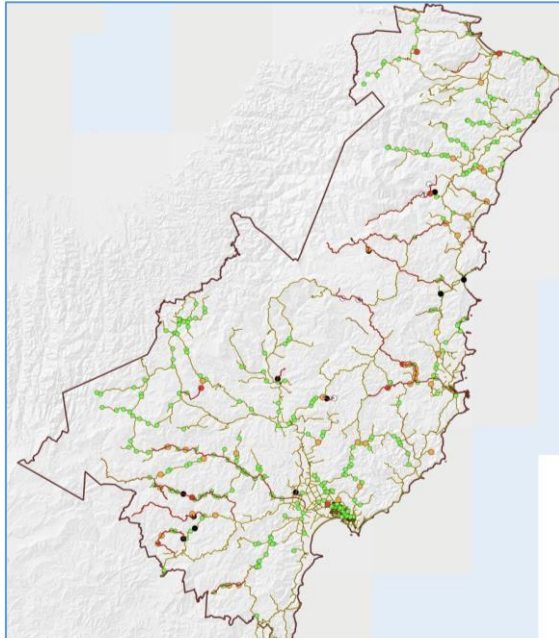
built environment



LOCAL ROADS

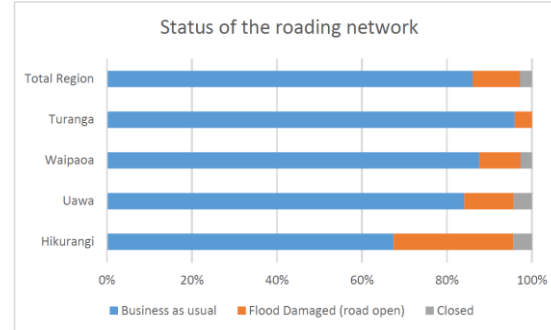
There are 132 active sites under temporary traffic management where works are ongoing and 74 sites that are long term.

The current status of roads by contract area and total network is displayed below. In summary, 86% of the entire network is back to business as usual, there could be isolated dropout sites but the road is back to its general normal form and function. 11% of roads remain significantly flood-damaged and 3% of our roads remain closed.



Bridges and roads post Gabrielle.

- Black (essentially means bridges destroyed), - Red (bridges severely damaged and closed),
- Orange Bridges - damaged and restricted - Green - bridges either with no or minor damage.



GDC is undertaking additional reseals over the next two weeks, see Appendix One. The initial programme was completed, but some funding from this programme had yet to be spent.

Flood Damage

- Monitoring flood damage achievement to ensure funding remains available for the financial year.

As part of the flood response, we are removing woody debris from around bridges. This is isolated to 20m up and downstream of structures as this is all Council is funded to remove. As there is no plan for disposal, it is being stockpiled on banks for future disposal.

WATER SUPPLY

Muriwai Water Supply

- The final flow checks to maximise the lines capacity will be completed this week.
- Marae connection is completed.
- Discussions are progressing with the community re the opening of the facility.

Ruatoria drinking water supply

- Waiting feedback regarding the funding required to complete the project.

HEADS UP

Emergency provision of RMA s330

We currently have 16 documented sites that work has been completed under the emergency provisions of the RMA. As the contractor work programmes are developed and the sites are identified the s330 documents are produced and sent to GDC compliance team.

During the first few weeks after the cyclone numerous sites had work completed where RMA triggers were reached. We are still following up on these sites. All dump sites follow the s330 process. A LGOIMA has been received requesting information on all sites where RMA triggers were reached.

Procurement of bridge construction / repair works.

The procurement process has now been completed for Black, Red and Orange bridges, that included the local industry involvement. It also includes the recommendation of a Tier 1 contractor – sign off is due this week.

RIVER IMPROVEMENTS AND CAPITAL PROJECTS

Mangahauini River Repairs & Improvements (Emergency Works & Planned CapEX)

- Construction continues as planned. Rock delivery has slowed but will be prioritised next week
- Meeting this week with Waka Kotahi and Journeys to discuss a joint erosion protection solution from the SH bridge up Moana Street, to the kura.
- Catchment inspection to better understand and scope a report into future sediment and flooding projections for the catchment.

RIVER FLOOD CONTROL CLIMATE CHANGE RESILIENCE PROJECT

- Around 32km of the total 64km of Waipaoa stopbanks have been fully upgraded to date.
- Currently there is insufficient GDC land available in the area to provide the soil volumes we need to upgrade the stopbanks upstream.
- Mahunga Floodgate Construction - WORKS ON HOLD OVER WINTER
- About 9km of stopbanks have been fully upgraded on the western side to date between Opou Road, Te Arai Stream and the ocean, including culvert renewals.
- Also to be completed in spring is 700m of stopbanks to be upgraded between the Whatatuna floodgates and SH2, as well as Gabrielle repairs to the stopbank just downstream of the Railway Bridge near Karaua Stream.

natural environment

The natural environment is still in a significant assessment phase. **REGIONAL ASSESMENTS INLCUDE:**

- Landslide and riverbank erosion assessments conducted at Tokomaru Bay and Waipiro Bay with two sites red stickered and one site yellow stickered. Kopuaroa Road property inspected and remains in 'imminent risk' category.
- Site visits to imminent risk properties in Gisborne City conducted with ongoing monitoring.
- Flood height measurement programme initiated for Te Karaka, Gisborne City, and Lavenham Road.
- Access to Planet Lab satellite imagery and drone mapping will aid with the assessments required post Gabrielle.
- NIWA supporting with offshore environmental impacts survey and base level flood spread modelling .
- Scion engaged to assess water supply catchments to establish the reservoir of large woody debris available for mobilisation, and options for expanding out to region as part of the woody debris and silt removal project.
- Engagement with Auckland University to discuss a programme whereby their students, under supervision, provide support for geotechnical assessments of uninsured properties.

Expert panel established for Mangahauini River have identified the below key issues:

- Earthflows above the Mangahauini landslide dam are active and are pushing the river against the highway.
- Earthworks associated with the reinstatement of the road may have reactivated a relic landslide on the true lefthand side of the river.
- An old grade-control sheet piling dam perpendicular to the river is scouring out on the true right bank and exacerbating instability of the earthflow at that site.

Land Rivers and Coastal

- Inspections of Tikitiki Stopbanks and Makarika School after Cyclone Gabrielle have occurred.
- Fulton Hogan maintenance contract - 90% progress achieved by the end of April.
- Te Karaka River channel capacity analysis is completed.
- Sandbags received from Rapid Response Team for emergency work (1000 bags) are stored at WWTP – Waipaoa storage.

MANAGED RETREAT

- GDC, alongside DPMC, are developing a process to aid in the categorisations of land within the region. This process will identify short, medium, and long term outcome expectations and what is required to reach decisions for Managed Retreat.
- In parallel to this, a recommended engagement approach with whānau and community is being developed so we can get certainty out to whānau with as many decisions as possible.
- Over the next fortnight, we will be developing initial messages for Cat 3 and Cat 1 categorised properties. Cat 2 will take longer as there is less certainty and complexities re: assessments, intervention options and engagement with affected whānau and communities.

WHENUA MĀORI

- A CI approach is being applied to support whenua Māori in the region with GDC, MPI, TPK, and Te Tumu Paeroa meeting to identify areas for collaboration and support.
- Te Tumu Paeroa are currently undertaking assessments of land blocks that they administer within Tairāwhiti.
- The Māori Land Court has granted Te Tumu Paeroa permission to undertake assessments on unadministered land in close proximity to Te Tumu Paeroa administered blocks. No inspections will be conducted where landowners object to an inspection.

ENVIRIO SCHOOLS

Over the week, every student from Waikirikiri School will have visited Bridget and Kauri at the Environment Centre, learning all things waste, landfills and how to become ecowarriors.



SILT REMOVAL
94 HOMES COMPLETED
5 HOMES IN PROGRESS
20 OUTSTANDING

Assessments have occurred to determine where silt needs to be removed from under homes so whanau can return.

27 homes have been identified and work will commence on this in the coming fortnight. Expected cost between \$8 – 12K per home.

economic environment



Trust Tairāwhiti has commenced discussions with sector leaders in agriculture and horticulture to identify community-led / sector recovery requirements.

We continue to manage and work across sectors to understand:

- # identify the best means of engaging with the communities under the spirit of community-led and “with them not to them”
- # As appropriate, work with / for the sectors to gather and analyse information to evidence insights (surveys).
- # Develop views on ‘mega-trends’.
Develop a plan for the economic sector.
- # Work with government agencies and Council and other stakeholders to bring solutions to meet the needs of communities.

The table to the right, is the template that has been developed to identify the long term resilience needs for industry's.

RISKS

There is a low appetite to engagement in work by the sector.

There is high uncertainty amongst sectors on whether to expect further support from central government and if so what type it is.


It is hoped Budget 2023 announcements may overcome this reticence.



COMMUNITY VOICE – AG EXAMPLE


FY23/24	Access to cash	The banking system and comms work post event
	Immediate clean-up	Cash
		Slash removal – who pays?
		Enhanced Task Force Green
		Employ Logistics person for region wide co-ordination
	Crop/stock loss from event	Cash
	Cost super-inflation	Cash - Fertiliser – Subsidy for cartage where access restricted
	More conservative investment decisions	Unknown
Volume impacts from upstream / downstream value chain constraints	Fix adjacent businesses, roads, public infrastructure	
FY25 - 26	Infrastructure loss	Professional Fencers – Expanded training and increased capacity funding
		Farm tracks and dams – Demand for earthworks exceeds supply
		Water Systems design and reinstatement
		Fund for Poplar/ native erosion planting
	Erosion and flood prevention (proven not ad hoc)	
Perennial crop productivity capacity loss	Cash.	
Annual crop replant loss	Cash.	
FY27+	Productive land use loss or heightened risk	Land use capability planning
	Funding	Banking / loan underwrites like Government Guarantee Scheme
Resilience	What happens when we get cut off again - boats, roads, planes = Diversification	
	Communication – Resilience of systems needs to be improved	
	Long term roads in the right place	
	Support mental health	
	Farm Advisory Support and Business Planning funding from MBIE	
	Local Agri funding co-ordinator	

pou tangata rite – our collective approach




Pou whenua - Iwi
He tauārai I ngā rohenga o Te Tairāwhiti.

A marker of territorial boundary lines.



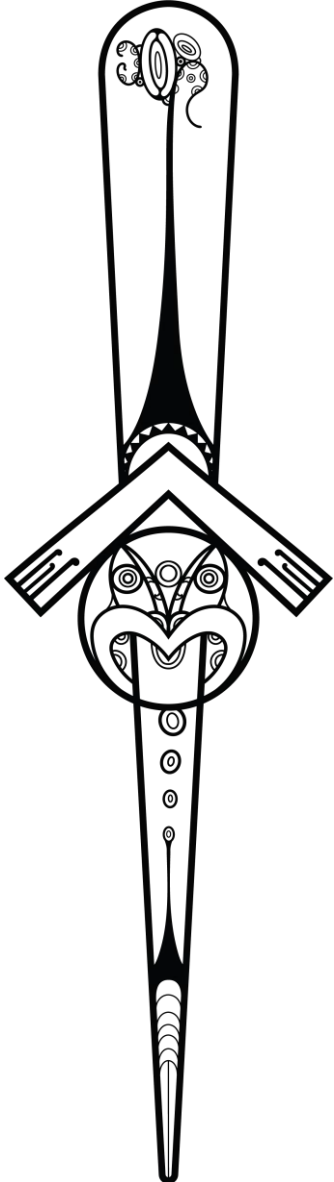

Kaikawe kōrerō – Backbone Structure
Te hunga kawē I ngā korero, I ngā whakapapa, ngā ringa hāpai I te Kaupapa whakarauora I ngā iwi o Te Tairāwhiti.

Repository of knowledge, or korero, or whakapapa. Those who hold the responsibility in this project.



Unaunahi – Backbone Structure
Te Moana, me ngā taonga katoa kai roto, e ora ai tātou te iwi o Te Tairāwhiti.

The importance and significance of the moana, of water within our region.


Tangata Rite - Social Recovery Environment
Ko ngā iwi maha, ko ngā konohi maha ēnei o te Te Tairāwhiti.
He momo kōruru e karanga ana ki ngā iwi kia mau, kia tau, kia kaha.

These are the people of Te Tairāwhiti, those who are resilient in hard times.




Te Rā - Natural Recovery Environment
Ko te Tairāwhiti.

The first place to see the sun.



Whare āhuru - Built Recovery Environment
Ko ngā marae maha ēnei o te Tairāwhiti.
Ko ngā whare hoki ēnei o te hunga noho kei tēnei rohe.

Marae across the Te Tairāwhiti region, an indicator of 'home', of safety of security.
These are also homes in our region that house our people.

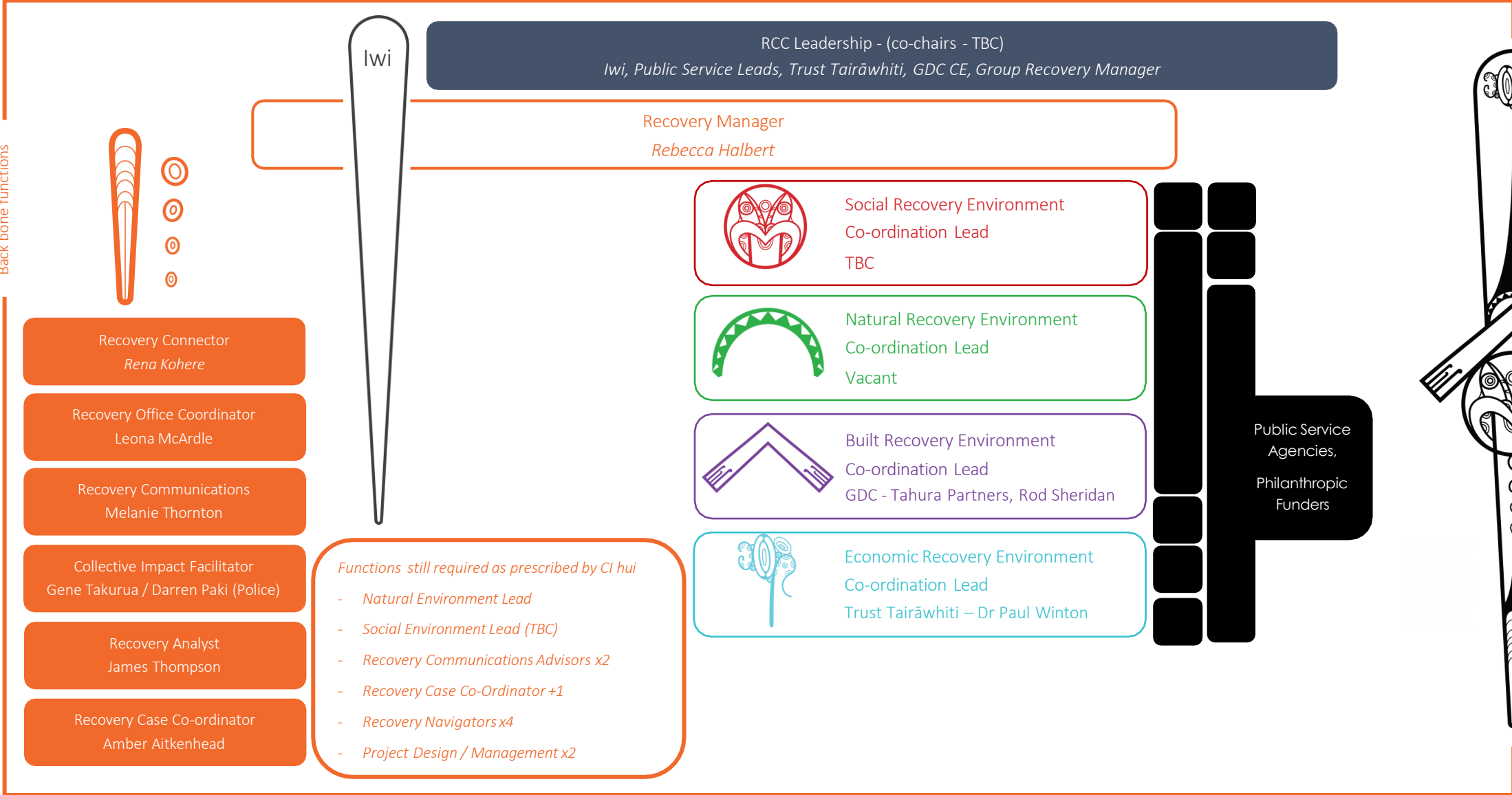


Manaia - Economic Recovery Environment
Ko te mana tēnei o nga iwi o Te Tairāwhiti

The mana that the people hold of Te Tairāwhiti hold.

recovery co-ordination centre – Tairāwhiti

the structure below identifies the mutual reinforcing resources accessible to the community, iwi and agencies who require support to develop, deliver or implement co-ordinated recovery in Tairāwhiti.



Appendix One – GDC reseals



Local Road Planned Work from May 15, 2023 - Reseals Dayworks up 6am-7pm

Piwiwhakao Road	Reseal section will begin 150m before 29 Piwiwhakao Road and run until Kirkpatrick Road intersection.	15-May-23	Stop/Stop - Traffic lights	15-20 minute delays
Kirkpatrick Road	Between Piwiwhakao Road and Tiniroto Road.	15-May-23	Stop/Stop - Traffic lights	15-20 minute delays
Tapuihikitia Road	The whole road from Whatatutu Road until the end.	16-May-23	Stop/Stop - Traffic lights	15-20 minute delays
Glenelg Road	The whole road from Back Ormond intersection until the end.	17-May-23	Stop/Stop - Traffic lights	15-20 minute delays
Royd Road West	From Glenelg Road intersection extending 386m along Royd Road West.	17-May-23	Stop/Stop - Traffic lights	15-20 minute delays
College Road	The whole road from Matawai Road/SH2 intersection until the end.	18-May-23	Stop/Stop - Traffic lights	15-20 minute delays, please note, traffic management will extend on to the state highway for a portion of this work.
Tuaraki Road	Between Wharerata Road/SH2 extending 30m past 134 Tuaraki Road.	19-May-23	Stop/Stop - Traffic lights	15-20 minute delays, please note, traffic management will extend on to the state highway for a portion of this work.
Saddler Road	Between Wharerata Road/SH2 and Taurau Valley Road	19-May-23	Stop/Stop - Traffic lights	15-20 minute delays, please note, traffic management will extend on to the state highway for a portion of this work.
Taurau Valley Road	From Waingake Road intersection extending 450m and then from 164 Taurau Valley Road to 649 Taurau Valley Road.	19 or 22 May 23	Stop/Stop - Traffic lights	15-20 minute delays
Rangitukia Road	From the northern side of the Poroporo Bridge just beyond Tapere-nui-a-Whatonga School (125m past Maraehara Road).	25-May-23	Stop/Stop - Traffic lights	15-20 minute delays