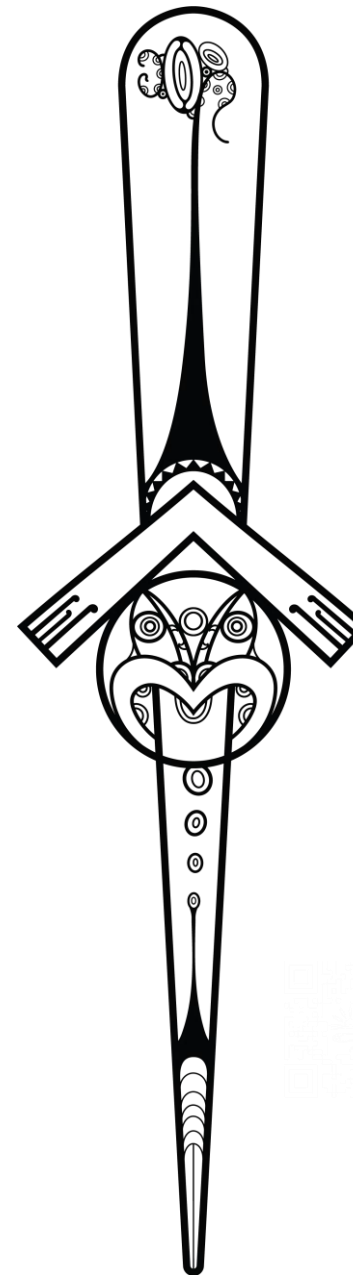




our road to recovery – Tairāwhiti

Weekly Report #7 – 6 June 2023



recovery coordination centre update

Overview

- The RCC is looking to start community engagement with three communities who have advised they are ready to commence community led recovery planning; Te Karaka which was one of our most affected areas, East Cape Road, and Ngai Tāmanuhiri.
- FOSAL contact with CAT 3 property owners where there was a high confidence in the categorisation has been completed. There are a number of properties being assessed across the region so we can work to provide certainty to more whānau. Overall feedback from whānau was sense of relief and gratefulness to hear from someone who has provided certainty.
- Mapping of the FOSAL category two has started; we hope to have this developed by end of this week.
- Regional operational leaders have started to adopt a collective approach to Recovery. This is a great step forward as will help the region drive progress across regional priorities.
- RCC is focussed at the moment on resourcing and re-evaluating/resetting our environment leads and tasks. A resourcing request to support the reset has been submitted to the Cyclone Recovery Unit.
- Additional funding request for RCC (for backfill for Council staff) and also FOSAL (technical and operational support) sent to DPMC on Friday.
- There will be an extension request of the powers for Group Recovery Manager till 12 June.
- Follow up meeting with Te Karaka lead for insurance wraparound, and progress in terms of further discussions on collective impact.
- Decisions on funding for silt and debris removal on whenua Māori will be made by Cabinet this week and potential changes to administration of funding
- Trust Tairāwhiti meeting of key stakeholders to take stock of where their programme is at – intention is to submit a letter to Ministers at the end of this month identifying funding requests aligned with actions.
- Meeting with Minister’s Advisor Recovery identifying next steps for Recovery Planning and submission of further budget information. Will be an additional attachment to Recovery Plan after workshop on priorities for submission to agencies.

Risks

- Continued impacts on rural communities resulting in isolation. This is expected to be the case for the winter months.
- Overall struggle with the number of urgent or immediate requests coming in from central govt which is derailing the focus of locally-led priorities. Really awesome to speak with Herewini and team to work on closing this gap – and hopefully that can streamline through the system as a whole.
- There has been frustration expressed by community that the tension between Council and iwi relationships has impacted recovery progress.
- There is continued community confusion between the FOSAL Categorisation of properties and the red/yellow stickered council process of buildings. An increase communication and awareness campaign is being developed to help increase clarity on this.

our weekly summary

Local Roads					
Date	Roads closed to heavy vehicles	Bridges closed	Local roads closed	Roads opened	Notes
1 May 2023	11	20	21	0	\$17.2M spent on repairs
7 May 2023	12	17	14	7	\$19.0M spent on repairs
14 May 2023	13	17	14	0	
21 May 2023	12	17	14	0	
28 May 2023	11	17	14	0	next update post May Month End Close
4 June 2023	14	17	9	5	

Housing				
Date	Assessments completed	Red stickers	Yellow stickers	Stickers removed
1 May 2023	526	27	202	0
7 May 2023	528	27	203	0
14 May 2023	530	28	202	1
21 May 2023	530	27	202	1
28 May 2023	531	27	202	0
4 June 2023	531	27	200	2

Silt Removal						
Date	Houses on the list*	Completed	In progress	Outstanding	Money Spent	Money Accrued
1 May 2023	126	87	6	33	not recorded retrospectively	
7 May 2023	118	93	5	20	\$638K	\$38K
21 May 2023	119	94	5	20		
28 May 2023	119	94	5	20		
4 June 2023	119	94	5	20	\$659K	

our weekly summary

Job seeker Support

Date	Main benefit recipients (increased by)	Job seekers support - work ready grants (increased by)	Job seekers support - work ready recipients (increased by)	Job seeker support (work ready cancels into work)
24 April 2023	171	42	93	21
1 May 2023	171	24	90	21

Mayoral Relief Fund and Disaster Relief Fund

Date	Received	Pending	Processed	Declined	Assessed	Money available	Money allocated
1 May 2023	384	247	60	28	102	\$3.4M	\$2.12M
7 May 2023	390	202	38	28	150	\$3.4M	\$2.42M
24 May 2023	404	35	102	28	239	\$3.4M	\$2.78M
2 June 2023	416	43	74	28	271	\$3.4M	\$2.95M

Economic Environment Summary

Date	Applications received	Applications Processed	Applications Approved	Money Distributed	Money Requested	Estimated Loss
24 April 2023	877	810	661	\$6.37M	-	-
7 May 2023	877	877	729	\$7.18M	\$19.91M	\$55.1M
11 May 2023	877	877	724	\$16.2M	\$19.89M	\$55.1M
15 May 2023	877	877	729	\$16.28M	\$19.89M	\$55.1M

Note: Applications closed April 16 2023

built environment



There are 51 crews, more than 130+ field staff, across the Tairāwhiti network completing the recovery efforts on:

- # resilience work to protect roads from river scours
- # road repairs
- # bridge remediation
- # silt removal
- # woody debris treatment
- # drainage improvements.

Frasers Bridge Kanakanaia Road Debris Removal



Resources are under pressure, and sometimes things happen slower than preferred. Materials are being sourced from external sources and we are competing with Northland, Coromandel and Auckland, who are also trying to rebuild fragile networks.

Bridges

23 bridge repairs have been allocated across four contractors. Work on the bridges is contingent on low river flows and projection of clear weather. There have been some delays on the High Profile Red Bridges (Awatere Bridge, Makarika Bridge 2) due to:

- high river flows washing away the island that was built around the pier to help hold it in place. Without this support it is free to rotate further.
- continual use by vehicles over 3.5t
- access track and pad washed away due to rain in the region.

Ten containers have now arrived and designs/calculations completed with loading up 32t possible depending on configuration. Work will start soon on fabrication soon.

Reports have been received, that residents have been taking risks when crossing the swollen rivers after recent rain. Improved signage is now being developed, including more permanent height markers within the river.

Christopher Bridge
Wharekopae Road
Debris Removal



Impacted infrastructure impacting rural communities

Our rural communities that have marginal access are starting to strain and are making frequent contact with Council about “implementation of plan B”. It is becoming evident that there has and will continue to be an ongoing issue for communities over the winter months.

This is being managed within connections to Waka Kotahi, Civil Defence with an aim to link in Ministry of Social Development and Te Whatu Ora to ensure wraparound support is readily available for the whanau in these communities.

Drainage Improvements

There has been significant progress with the drainage improvements programme, with 67% of the planned recovery targets complete across the network. There is still a lot to do. However, progress is being made; 42 crews continue to work across the network to help achieve Gisborne District Council recovery targets.

Water

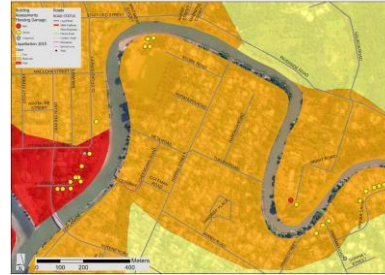
Across the road network, we have achieved 73% of our planned water tabling targets and are on track to complete the intended recovery targets.

Water	Stormwater	Wastewater Treatment
<ul style="list-style-type: none"> - Numerous new connection applications in process and guidance. - There are plans to clean the Waipaoa clarifiers - There is a snag in the Waipaoa pipeline and pump station design. Harvest of trees had progressed but dry weather is needed to upgrade the access track before trucking out the logs and trucking in the new water pipes. - William’s dam turbidity is still high. Some turbidity improvement on the Clapcott, but it is still dirty. 	<ul style="list-style-type: none"> - Technicians inspected 53 properties in the last week. - They repaired 26 faulty gully traps. - Removed 2 downpipes into an approved stormwater outlet. 	<ul style="list-style-type: none"> - There have been ongoing issues with the water build up in the compressors. Looking at installing another drier post compressor to dry the air further. The auto-drains on one compressor

natural environment



Our main area of focus has been on the Future of Severely Affected Lands (FOSAL) and refining and mapping areas captured by the government classification framework which is well underway. Category Three High confidence property owners have been contacted. The priority is now on mapping Category Two in similar to the below images ([example only](#))



The focus

- # Work is currently occurring with the Ministry of the Environment (MfE) on potential orders in council (OIC) to facilitate recovery and manage workloads. It is likely the OIC will cover topics such as:
 - waste management,
 - responding to the Ministerial Inquiry into Land Use in Tairāwhiti and Wairoa,
 - cossetting and compliance processes,
 - timeframes for implementing national direction
 - legislative changes to facilitate the rebuild/restoration of flood damaged homes.
- # Responses are being developed in relation to the Ministerial Inquiry into Land Use in Tairāwhiti and Wairoa. The focus is on consent reviews and finalising a plan change which will put in place more stringent controls on forestry operations on vulnerable land.
- # To ensure information between the different workstreams are linked within the MBIE Extreme Weather Platform a number of meetings are occurring with:
 - science managers
 - national science challenge leads
 - chief scientists at government bodies working on natural hazard related research.
- # Reengagement has started with Aqua Intel Aotearoa who are contacting iwi in Tairāwhiti on deploying Sky Team aerial aquifer mapper in Tairāwhiti. This is deferred due to cyclone Gabrielle. Currently considering roll out in November 2023.

Current assessments and monitoring priorities

Assessments and monitoring has been the priority in the Natural Environment over the last eight weeks. This continues to be a focus across local and central government agencies and is driving a large portion of decision making in relation to FOSAL, and mitigation interventions for future events. The below identifies the depth and breadth of the work being undertaken across the region:

- # Large Woody Debris (LWD) assessments have been completed at Kanakanaia, including drone mapping.
- # Monitoring visits to properties at risk of landslides in Balance St and Russell St, Gisborne informed some of the FOSAL decisions, and continue to be monitored.
- # A review and spatial analysis of flood heights for Te Karaka, consistent with the work undertaken by PDP consultancy and a good correlation with Sentinel 2 Moisture index.
- # **Waimata Valley:**
 - Site visits and assessments of woody debris locations and scale conducted at Uttings Road and Manders Road completed.
 - Evaluation of techniques available to trace LWD from deposited area back to the source.
 - Flood height measurements of properties in Waimata Valley conducted.

There is a large volume of woody debris in the Waimata Valley area which is prompting significant disagreement between landowners and forestry companies as to who is responsible for the removal of the debris. The debris has the potential to create risk to properties and critical infrastructure for the Waimata area.

MfE Nature-based solutions funding:

GDC has identified the Waimata Valley as a site that will be appropriate for an MfE funded feasibility study (\$350k) project to identify nature-based solutions and mitigations for future flooding events.

The feasibility study will be a collaborative project between GDC, landowners and Iwi, with support from technical experts. This study is taking a collective 'Maunga to Moana' approach to developing solutions.

LiDAR

There has been a substantial gap in LiDAR data available for assessments of the region since the Cyclone. MfE and MBIE are now funding LiDAR across Tairāwhiti and Hawkes Bay with \$2m allocated to Hawkes Bay and \$1m for Tairāwhiti. Full LiDAR coverage for the region is now possible. This will go out for RFP as soon as possible with acquisition envisaged from 1 August.

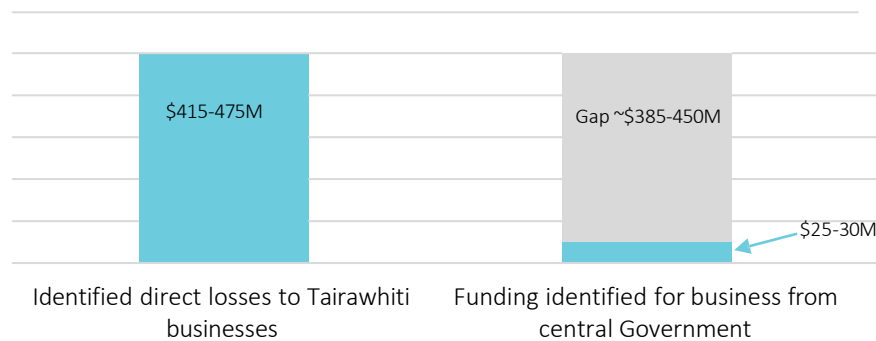
economic environment



Trust Tairāwhiti chaired a workshop with various sectors and government agencies and support groups to identify, following the 2023 Budget, what was available from agencies for specific business sector recovery needs.

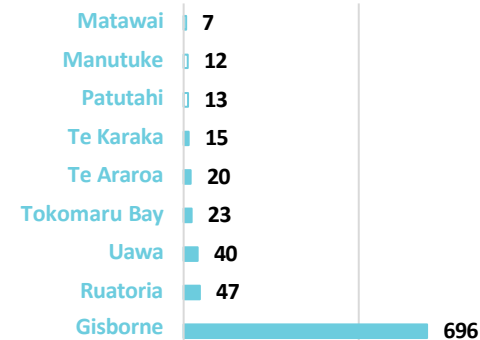
Initial insights from this workshop were:

- # There is funding available for the region and business but these don't align with the business recovery needs, and it is hard to associate how businesses will benefit or apply to the funding available.
- # There is additional non-financial support that is available to business which is currently being collated.
- # There is a big gap between the government financial support coming into the region and the total estimated losses (\$415 - \$475m)



Only 5 – 7% (~\$25-30m) has been available to support direct business losses and most of this funding has already been distributed to sectors and locations detailed below:

\$13.36M distributed



There is a reluctance to move forward with medium – long term recovery and resilience planning while businesses remain focussed on the clean-up response.

Next Steps

A proposal is being developed which will identify the key priorities for investment for the economic recovery for Tairāwhiti which will align with the loss matrix detailed in previous reports.

social environment



The re-evaluation of the social environment is underway. In the next two weeks it is planned that the social environment lead coordination agency will be contracted with an action plan in place to ensure social well-being cohesion and connection across Tairāwhiti agencies, iwi and communities.

Social cohesion and connectedness highlights

- # Collaboration with Te Whatu Ora to ensure wraparound psychosocial support was available to property owners who were provided certainty around the categorisations of their properties, and whānau affected by the Cyclone

“Thanks for calling, my estimation of the Council has serious improved. I've had support from the mayoral relief fund and a rates rebate which was much appreciated. We're still really anxious every time it rains and have had a few sleepless nights.”

- # RCC community engagement plans are completed with proposals being submitted to the Collective Leadership for Recovery in the coming weeks. Engagement has been initiated with Te Aitanga a Mahaki, East Cape Road and Ngai Tamanuhiri to support community-led recovery planning.

- # Toitu Housing has progressed access to cabins for temporary housing through the \$15M reprioritised through Housing Urban Development.

- # Large community turn out to wananga in Tokomaru Bay, Waipiro Bay, Te Araroa and Wharekahika where Te Puni Kokiri, RCC, Ministry of Primary Industry (MPI) collectively engaged on a number of topics including whenua Māori planning, funding availability, recovery progress and process. Key themes raised:

- requested clarity around access to funding being made available
- clarity around who's responsible for maintenance work (i.e drains and waterways)
- keenness to discuss and explore alternative transport options (blue highway, air)
- frustration with the lack of communication with regards to roading repairs and progress.

- # Department of Internal Affairs is driving progress on a funders forum, which will include philanthropic funders.

- # Ministry of Primary Industries have been actively engaged with communities resulting in fuel and fencing supplies provided to isolated communities, residential animal welfare support and supporting the Rural Coordination Group planning refresh.

- # Rural Support Trust continue to undertake farm assessments and wellness checks, With five roadshows being completed in Hicks Bay, Ruatoria, Uawa, Te Karaka and Warenga-o-Kuri, supported by MPI and Gisborne District Council.

- # RCC continue to liaise with the Ministers Office to ensure any requests from community and whānau are followed up. It is expected this fortnight community call in centres are established for whānau to have kanohi ki te kanohi with the Recovery Case Coordinators.

40 CONNECTED CALLS TO AFFECTED WHĀNAU

9 KANOHI KI TE KANOHI HUI WITH AFFECTED WHĀNAU

There has been a decreased level of phone contacts as complexity of individual cases has risen.

There are several cases of multidimensional needs that require a collective approach to reach resolutions.

Whānau voice themes

- Farmers continue to feel frustrated with a raft of issues including insurance delays, lack of available manpower and machinery, lack of comms, correspondence and coordination.
- Huge volumes of sediment in the coastal marine area which will significantly impact fisheries nurseries. New Zealand Fisheries will be carrying out sediment and slash research in Tairāwhiti.
- Slow progress is still featuring as a main frustration (slow communication and lack of clarity) on where claims can go.
- Funding applications for commercial removal of silt and debris from both properties and waterways has featured highly in conversations with many queries now focused on this matter. There is still uncertainty of timeframes and minimal clarity on when, who, and how this funding can be accessed by the public.

Potaka School prompting wider service availability

Teachers, students and the community continue to show resilience to ensure education is available for rangatahi and tamariki with an increase in their roll since the beginning of term 1.

Following a hui with Minister Allan, Potaka School, RCC and community, a number of significant issues were raised as a result of impacts from Cyclone Gabrielle.

The RCC continues to work with agencies to resolve the specific issues raised by Potaka School and continues to ensure the solutions are made available to the wider region where need presents.

Resolved

- Ministry of Education provided a generator the following Friday, and is working to ensure the school is sufficiently resourced to provide a safe and secure alternative learning environment for teachers, rangatahi and tamariki.
- GDC has established a communications route for roading updates which are disseminated weekly.

In progress

RCC continues to explore alternative access to dental services alongside Te Whatu Ora and Ministry of Education, with the hope the solution is available to wider coast students.