






APPENDIX H12

LANDSCAPING REQUIREMENTS / TYPES FOR AVIATION COMMERCIAL AND RURAL INDUSTRIAL A ZONE

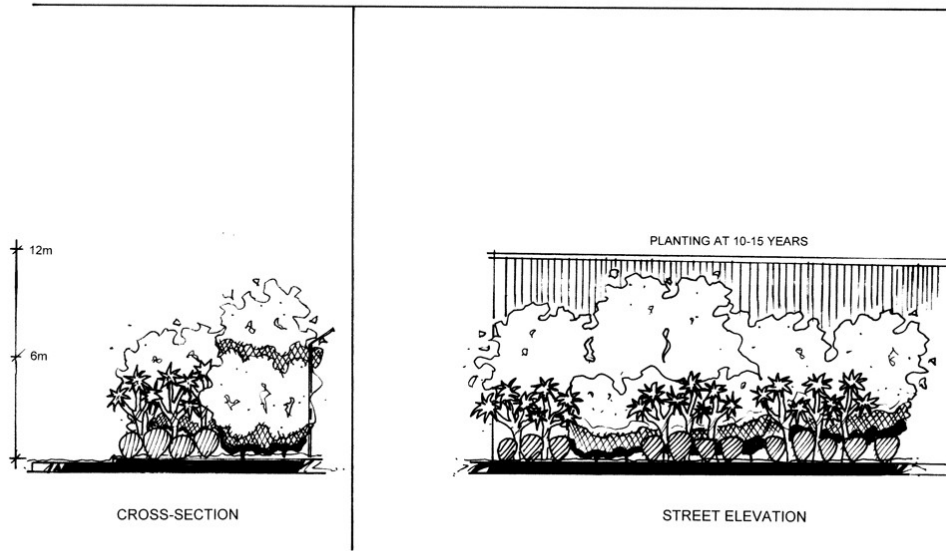
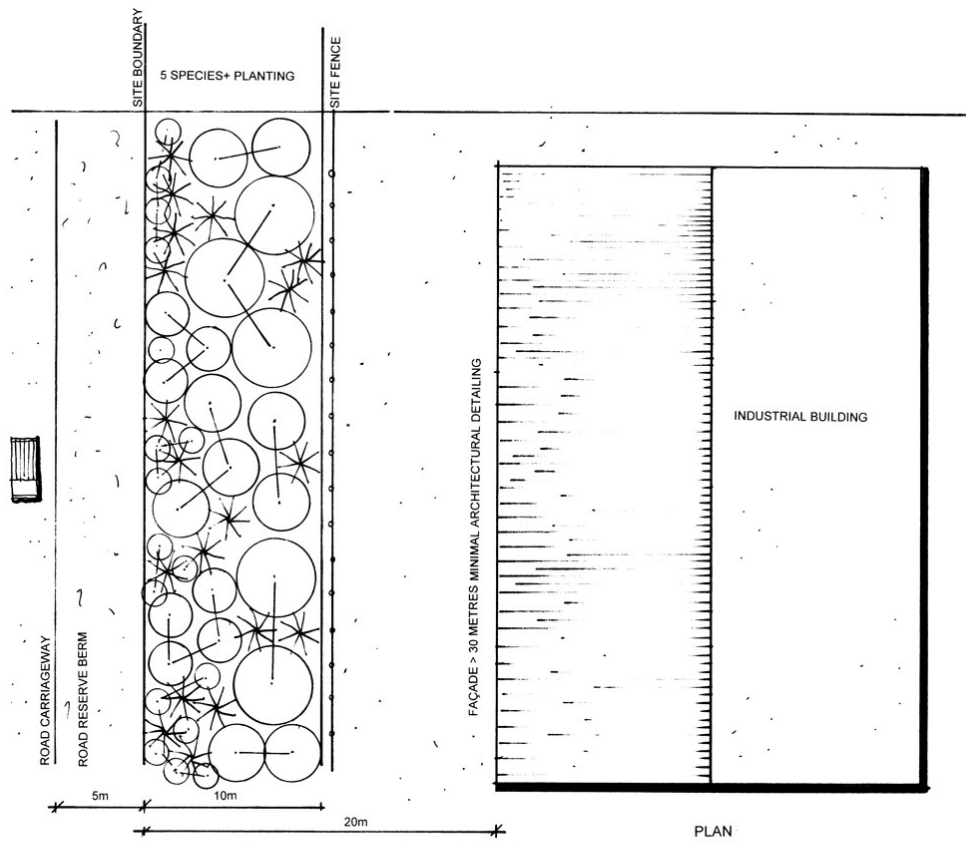
Table One – Rules for Landscaping the Aviation Commercial Zone and Rural Industrial A Zone

TYPE #	VISUAL EFFECT SOUGHT	INTENT	SUGGESTED SPECIES	USES	YEARS TO MITIGATION	YARD REQUIREMENT	PICTURE
Type 1 (Non Permeable)	Tall dense vegetation screen – (security or other fencing internal to planting)	To provide a 10 metre wide ribbon of planting.	Planting to be a mixed indigenous / exotic border, with a predominance of evergreen species: Akeake Lemonwood Pittosporum Karo Cabbage tree Puka Griselinea Eucalyptus Liquidambar Casuarina Alnus Poplar Flax Olive	Any State Highway road boundary. Road boundaries or other site boundaries adjacent to a rural zone, where the onsite building façade has a length greater than 30 metres. Road boundaries or other site boundaries adjacent to a rural zone where the onsite building height is greater than 10 metres.	A height of 10 metres within 15 years depending on species and conditions.	20 metres	 <p>Note: Security fence would be erected internally to the site.</p>

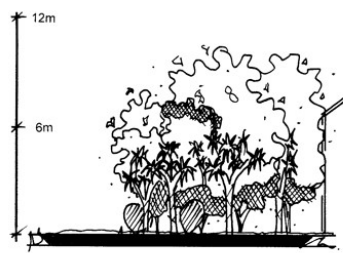
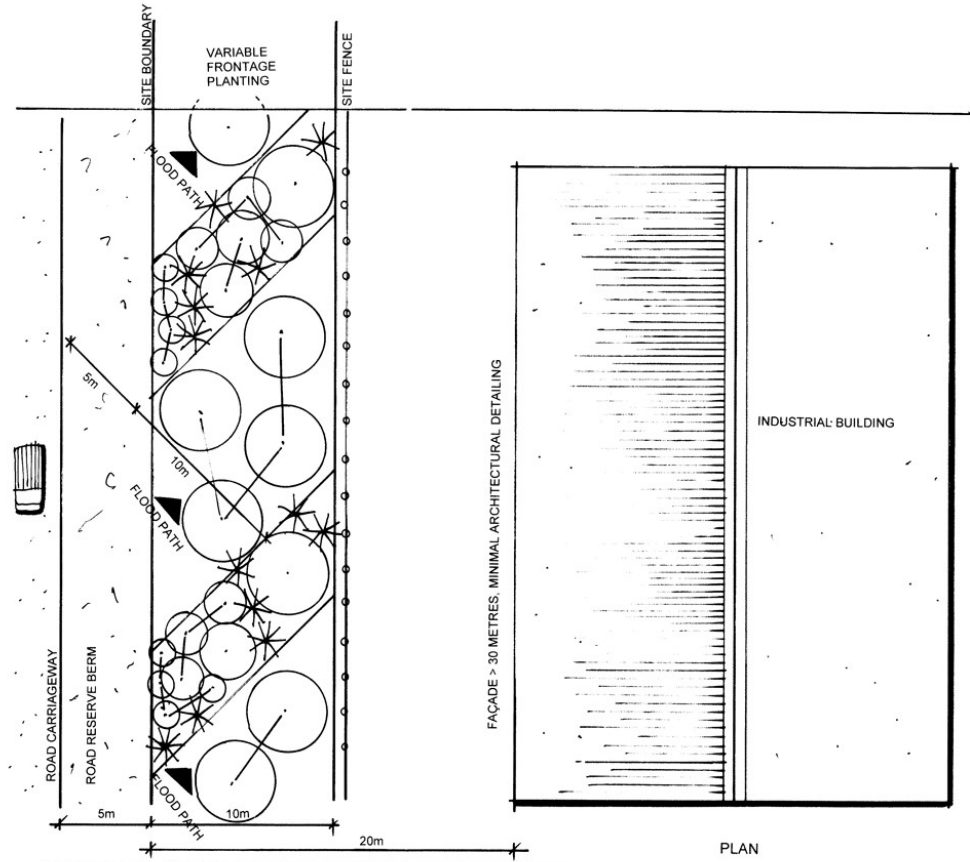
TYPE #	VISUAL EFFECT SOUGHT	INTENT	SUGGESTED SPECIES	USES	YEARS TO MITIGATION	YARD REQUIREMENT	PICTURE
Type 1A (Permeable)	Tall vegetation providing a mix of dense screening and a more open parklike area through which flood water may pass.	To provide a 10 metre wide ribbon of planting	One third (non – permeable): species as listed for Type 1. Two thirds (permeable): Any tree which has a formed clear of lateral branches to a height of 1 metre. Spacings between trees at least 2 metres.	Any State Highway road boundary. (where land is located within the F4 Flood Hazard overlay)	A height of 10 metres within 15 years depending on species and conditions	20 metres	
Type 2 (Non permeable)	Tall dense vegetation – screen (security or other fencing internal to planting). A maximum of one third of any frontage within the flood path will be planted in this type.	To provide a double row of two - four evergreen species as a shelterbelt/hedge. Planting 4.5 metres wide.	Suggested species: Lemonwood with Flax, Leptospermum 'Coppersheen' with Hebe, Eucalyptus with Flax Liquidambar with Hebe	Road boundaries or other site boundaries adjacent to a rural zone where the onsite building height is less than or equal to 10 metres (except boundaries adjacent to State Highway or those covered by Type 1 or Type 3 criteria).	A height of 7 metres within 15 years depending on species and conditions.	10 metres	
Type 3 (Non permeable)	Tall partial screen A maximum of one third of any frontage within the flood path will be planted in this type.	Amenity trees with spaced planting (at 7 metre intervals) in a row as single specimens with low plantings underneath. Planting 4.5 metres wide.	Examples include: Melia, Lemonwood, Leptospermum 'Coppersheen', Olive tree, Liquidambar Palm underplanted with Flax, Astelia, Hebe, Native grasses or Day lilies	For the length of building façades along any road boundary or any site boundary adjacent to a rural zone (excluding state highway) where building façade is less than or equal to 30 metres in length and has significant architectural detailing of the façade.	A height of 7 metres in 15 years depending on species and conditions	6 metres	

TYPE #	VISUAL EFFECT SOUGHT	INTENT	SUGGESTED SPECIES	USES	YEARS TO MITIGATION	YARD REQUIREMENT	PICTURE
Type 4 (Non Permeable)	Low partial screen A maximum of one third of any frontage within the flood path will be planted in this type.	Plants up to 1.5 metres tall as screen for visitor car park. Planting 4.5 metres wide.	Examples include: Flax, Hebe, Astelia, Olearia	Any road boundary where building length is less than or equal to 30 metres and no buildings closer than 20m to boundary (excludes sites adjacent to state highway). Used where visitor or staff car park areas are situated between the building and the boundary	A height of 1.2 metres in 4 years depending on species and conditions	6 metres	
Type 4A (Permeable)	Partial screen of car park area.	Vegetation providing a mix of dense partial screening and a more open area through which flood water may pass.	One third (non permeable): Species as listed in Type 4. Two thirds (permeable): Cabbage tree, Puka, Olive tree, Lancewood. Or any tree which has a formed trunk clear of lateral branches to a height of 1 metre. Spacings between trees at least 2 metres.	Any road boundary where building length is less than or equal to 30 metres and no buildings closer than 20m to boundary (excludes sites adjacent to state highway) Used where visitor or staff car park areas are situated between the building and the boundary and where land is located within the F4 Flood Hazard overlay)	A height of 1.2 metres in 4 years depending on species and conditions	6 metres	
Type 5 (Non permeable)	Screening of yard storage areas, heavy traffic movements and headlight glare. A maximum of one third of any frontage within the flood path will be planted in this type.	Plants to 2.0 metres tall as dense hedging screen. Planting 3.0 metres wide. For screening of yard storage areas plants of at least 2 metres up to 5 metres	Examples include: Olearia, Pittosporum, Karo	Any road boundary where building length less than or equal to 30m and no buildings closer than 20m to boundary (excludes sites adjacent to State Highway). Used where truck maneuvering bay and yard storage areas are situated between the building and the boundary.	A height of 2 meters in 5 years depending on species and conditions	4.5 metres	

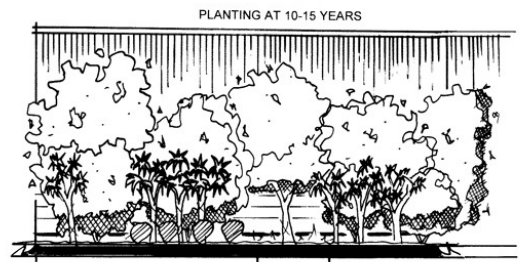
TYPE #	VISUAL EFFECT SOUGHT	INTENT	SUGGESTED SPECIES	USES	YEARS TO MITIGATION	YARD REQUIREMENT	PICTURE
Type 5A (Permeable)	Screening of yard storage areas, heavy traffic movements and headlight glare.	Vegetation providing a mix of dense partial screening and a more open area through which flood water may pass.	<p>One third (non permeable): Species as listed in Type 5.</p> <p>Two thirds (permeable): Cabbage tree, Puka, Olive tree, Lancewood. Or any tree which has a formed trunk clear of lateral branches to a height of 1 metre. Spacings between trees at least 2 metres.</p>	Any road boundary where no buildings are closer than 20m to boundary (excludes sites adjacent to state highway) suited to truck manoeuvring bay and yard storage areas.	A height of 2 meters in 5 years depending on species and conditions	4.5 metres	
No landscaping requirements				Any site boundary adjacent to or within Gisborne Airport boundary or any site boundary adjacent to a site zoned industrial.		<u>No Yard</u>	



TYPE 1 STATE HIGHWAY (Non-Permeable option) DO NOT SCALE
COMPLETE SCREENING of BUILDING

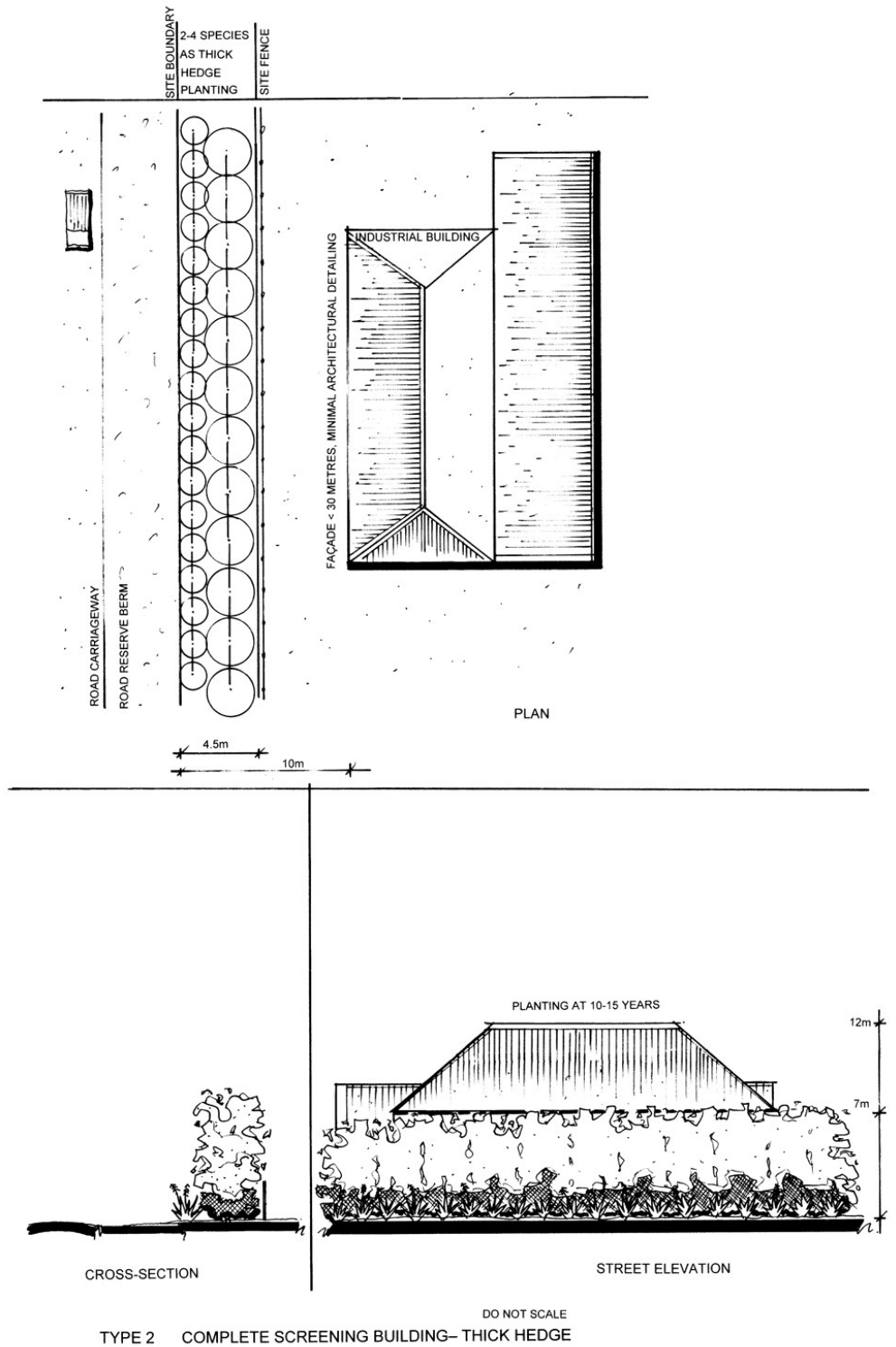


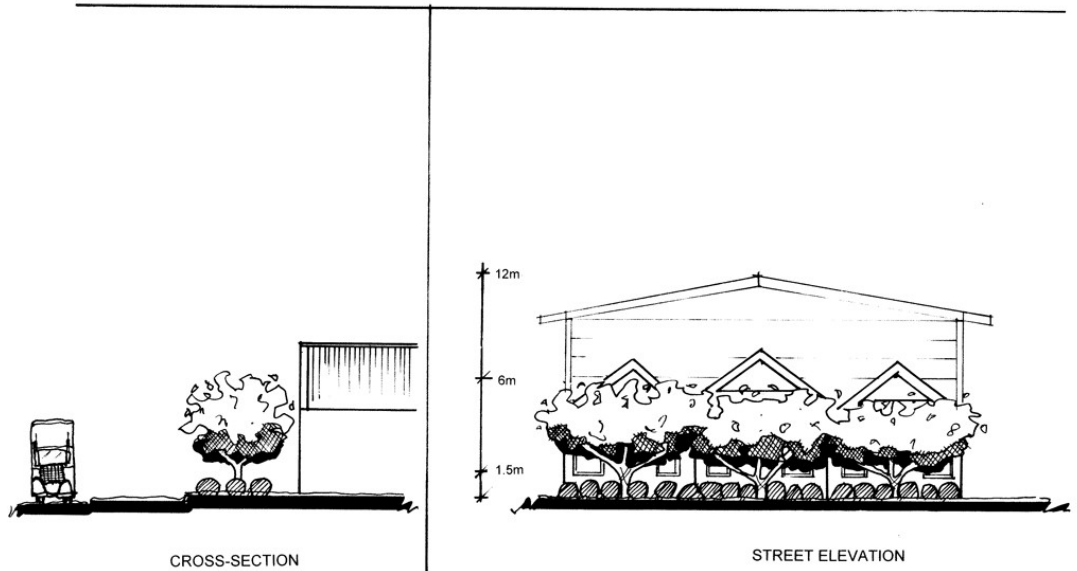
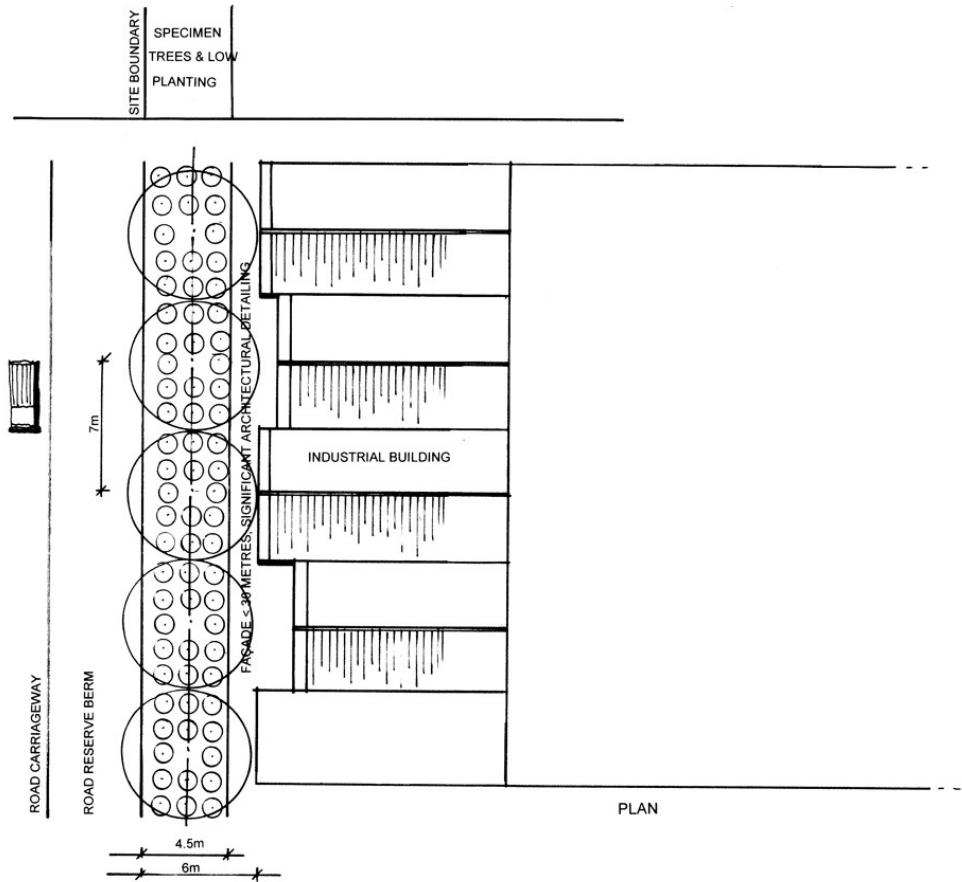
CROSS-SECTION



FLOOD PATH
STREET ELEVATION

TYPE 1A STATE HIGHWAY (Permeable option) DO NOT SCALE
SCREENING WITH FLOOD PATH



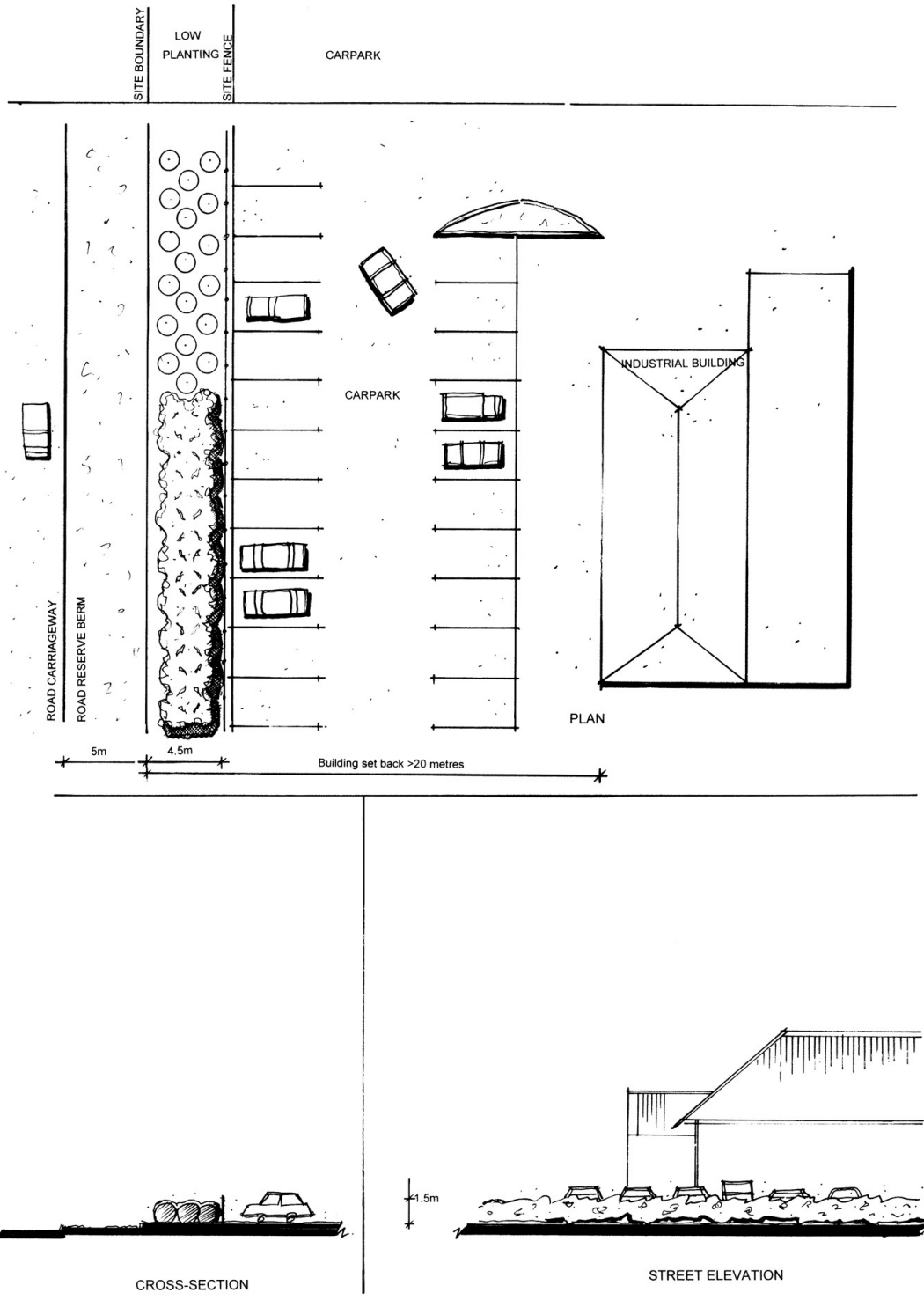


CROSS-SECTION

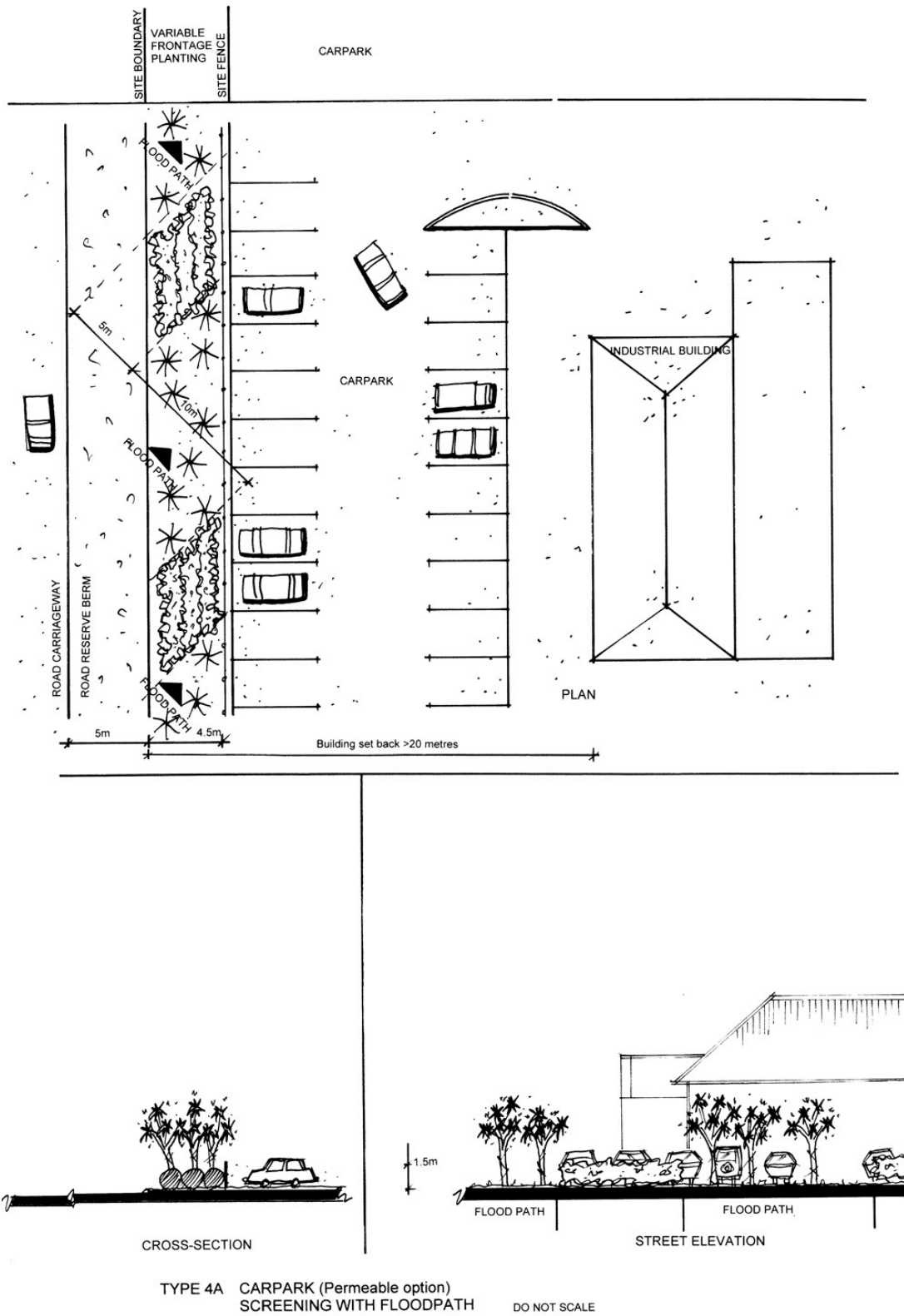
STREET ELEVATION

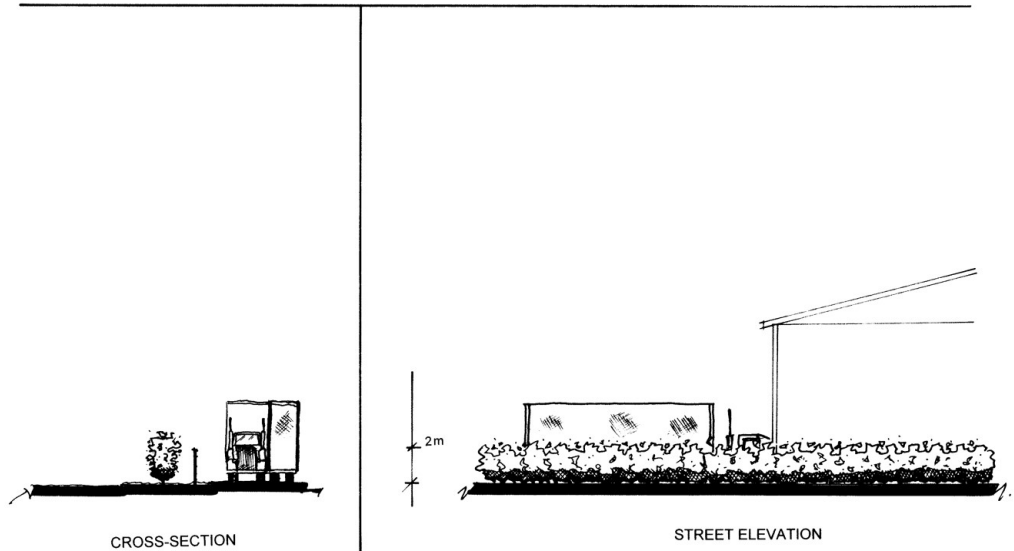
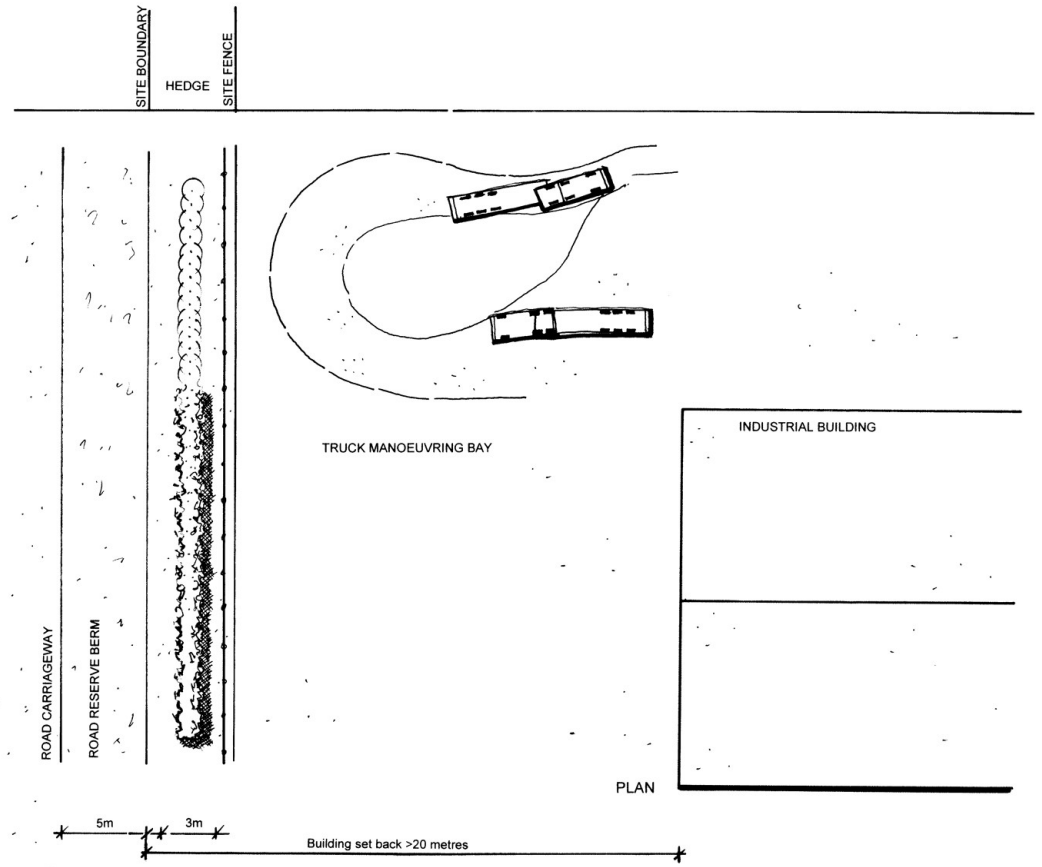
DO NOT SCALE

TYPE 3 PARTIAL SCREENING - BUILDING

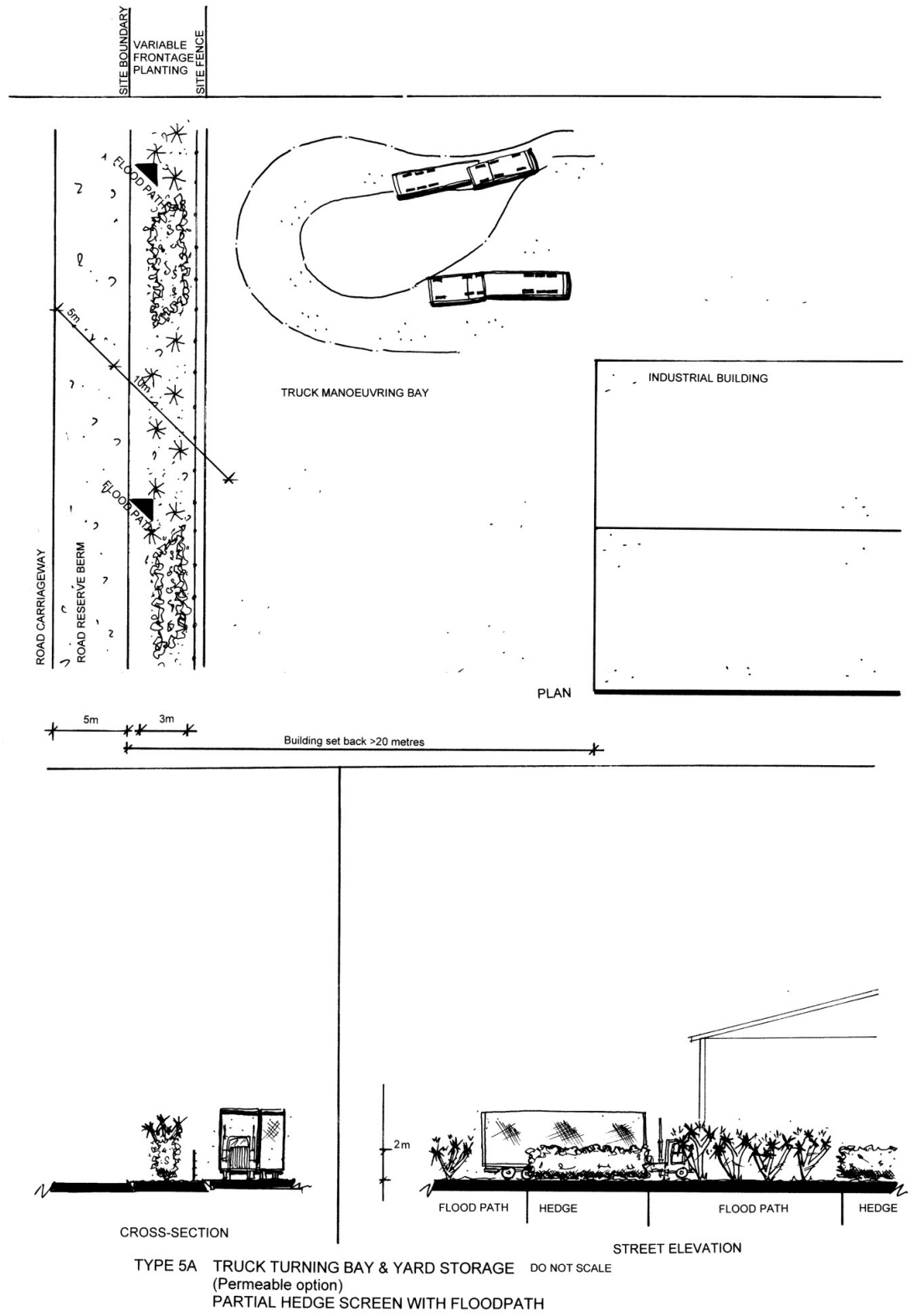


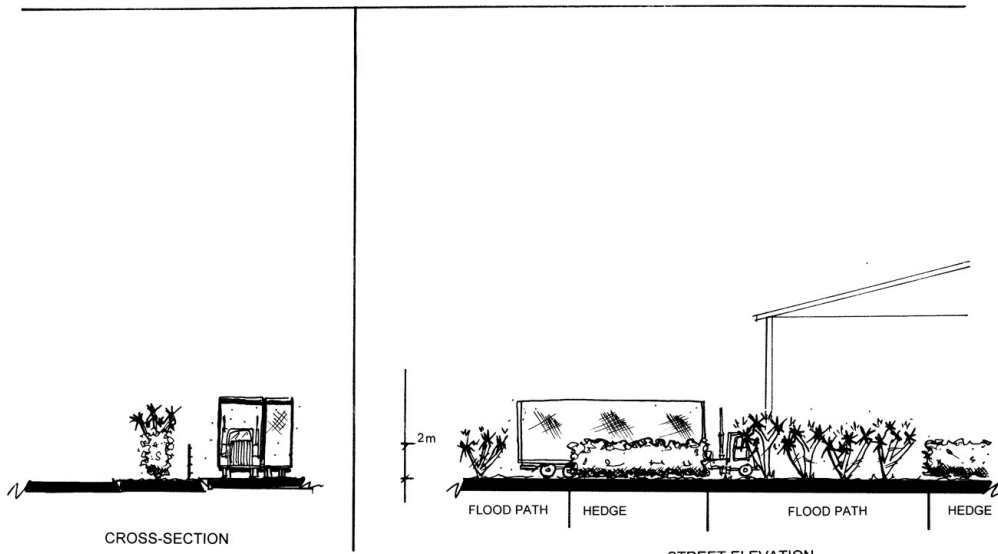
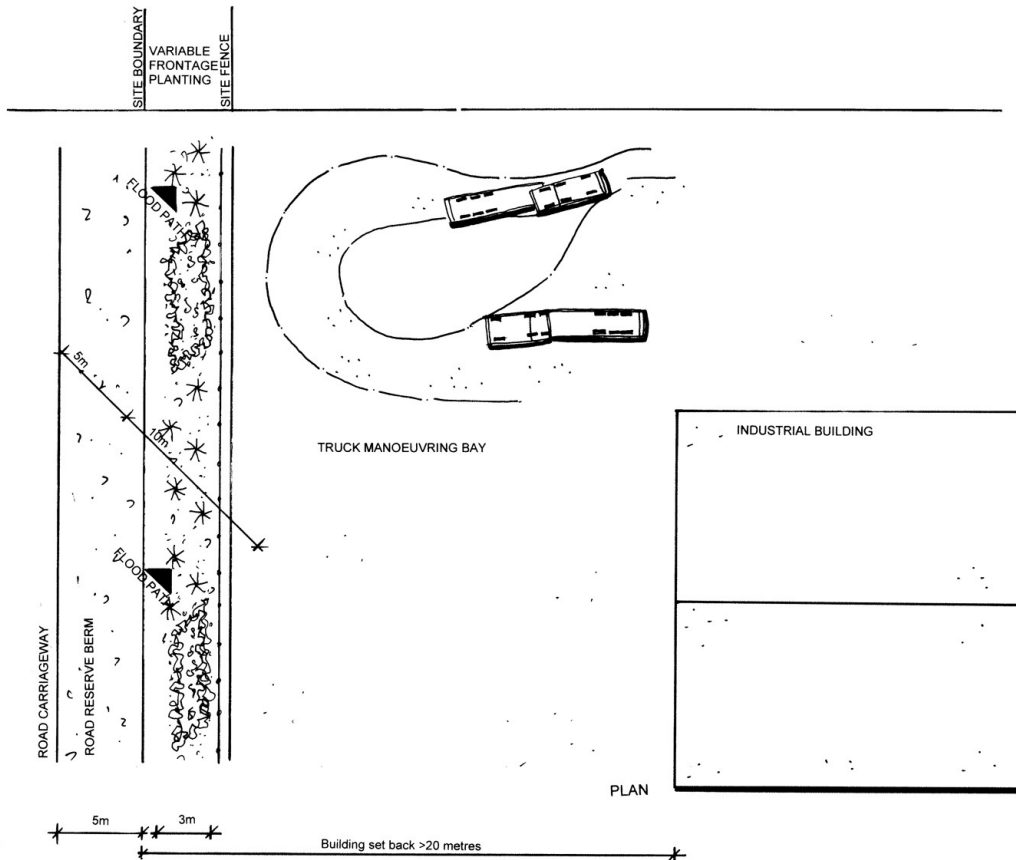
TYPE 4 PARTIAL SCREENING - CARPARK (Non Permeable option) DO NOT SCALE





TYPE 5 TRUCK TURNING BAY & YARD STORAGE DO NOT SCALE
(Non Permeable option)
HEDGE SCREEN





TYPE 5A TRUCK TURNING BAY & YARD STORAGE DO NOT SCALE
(Permeable option)
PARTIAL HEDGE SCREEN WITH FLOODPATH